
GOVERNMENT NOTICES • GOEWERMENTSKENNISGEWINGS

DEPARTMENT OF TRANSPORT

NO. 363

27 MARCH 2018

**THE SOUTH AFRICAN NATIONAL ROADS
AGENCY SOC LIMITED**Registration No: 1998/009584/30

DECLARATION AMENDMENT OF NATIONAL ROAD R61 SECTION 4

AMENDMENT OF DECLARATION No. 546 OF 2003.

By virtue of section 40(1)(b) of the South African National Roads Agency Limited and the National Roads Act 1998 (Act No. 7 of 1998), I hereby amend Declaration No. 546 of 2003 by substituting a part of paragraph (II) of the Schedule, being the descriptive declaration of the route from Tarkastad up to its junction with National Road N6 Section 4, at Queenstown, with the accompanying sheets 1 to 19 of Plan No. P989/17.

In the town of Tarkastad the R61 Section 4 enters the town from the North West and follows the street known as Grey Street at the time of declaration.

In the town of Queenstown the R61 Section 4 enters the town from the West and follows the streets known as Main Road and Voortrekker Street at the time of declaration.

(National Road R61 Section 4: Tarkastad – Queenstown)

MINISTER OF TRANSPORT

DEPARTEMENT VAN VERVOER

NO. 363

27 MAART 2018

**DIE SUID-AFRIKAANSE NASIONALE
PADAGENTSKAP MSB BEPERK**

Registrasie No: 1998/009584/30

VERKLARING WYSIGING VAN NASIONALE PAD R61 SEKSIE 4

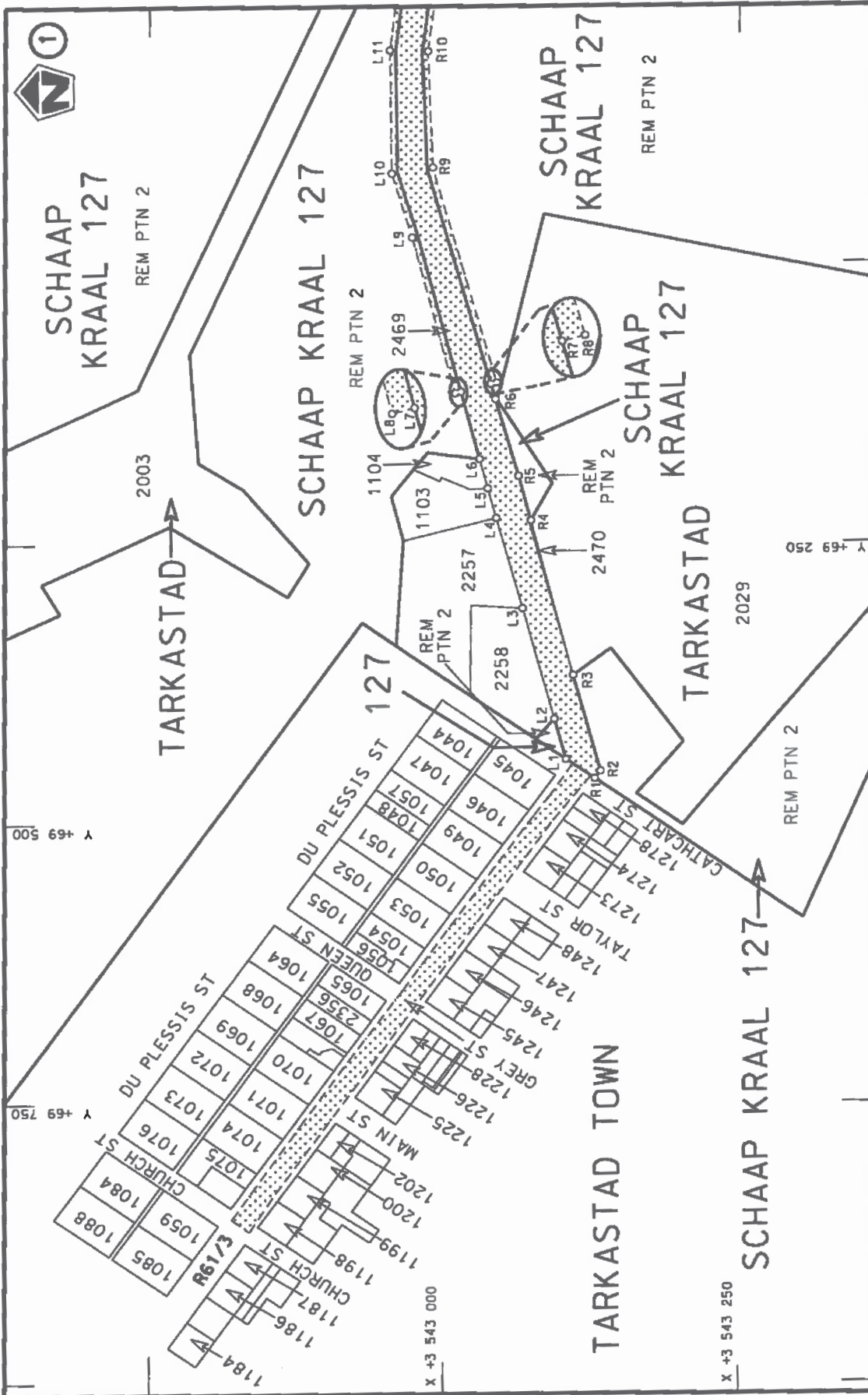
WYSIGING VAN VERKLARING No. 546 VAN 2003.

Kragtens Artikel 40(1)(b) van die Suid-Afrikaanse Nasionale Padagentskap Beperk en Nasionale Paaie Wet 1998 (Wet No. 7 van 1998), wysig ek hiermee Verklaring No. 546 van 2003 deur 'n gedeelte van paragraaf (II) van die Skedule te vervang, synde die gedeelte van die beskrywende verklaring van die pad vanaf Tarkastad tot by die aansluiting met Nasionale Pad N6 Seksie 4, by Queenstown, met bygaande velle 1 tot 19 van Plan No. P989/17.

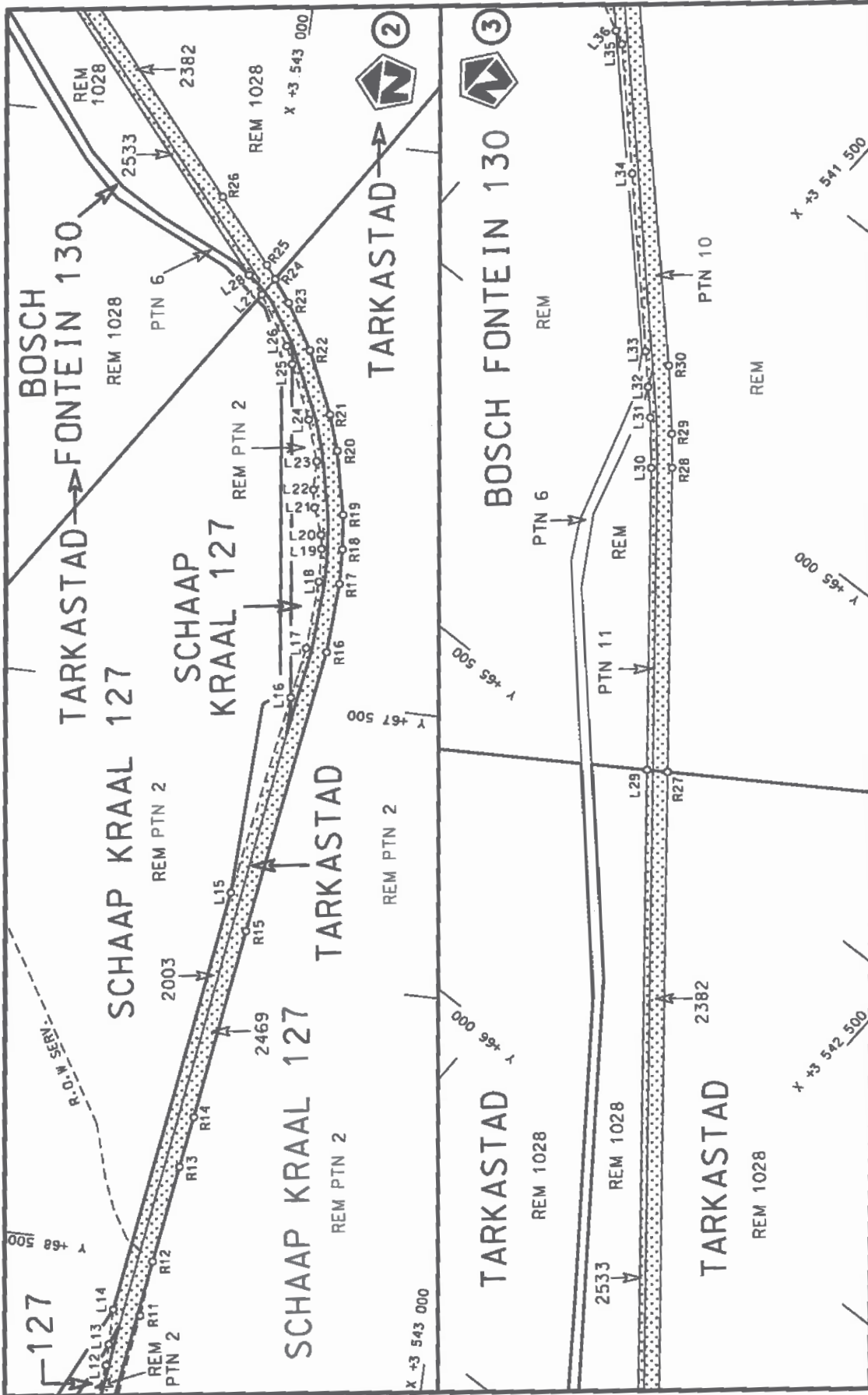
In die dorp van Tarkastad kom die R61 Seksie 4 die dorp binne vanuit die Noordweste en volg die straat bekend as Greystraat tydens datum van verklaring.

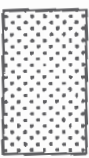
In die dorp van Queenstown kom die R61 Seksie 4 die dorp binne vanuit die Weste en volg die strate bekend as Hoofpad en Voortrekkerstraat tydens datum van verklaring.

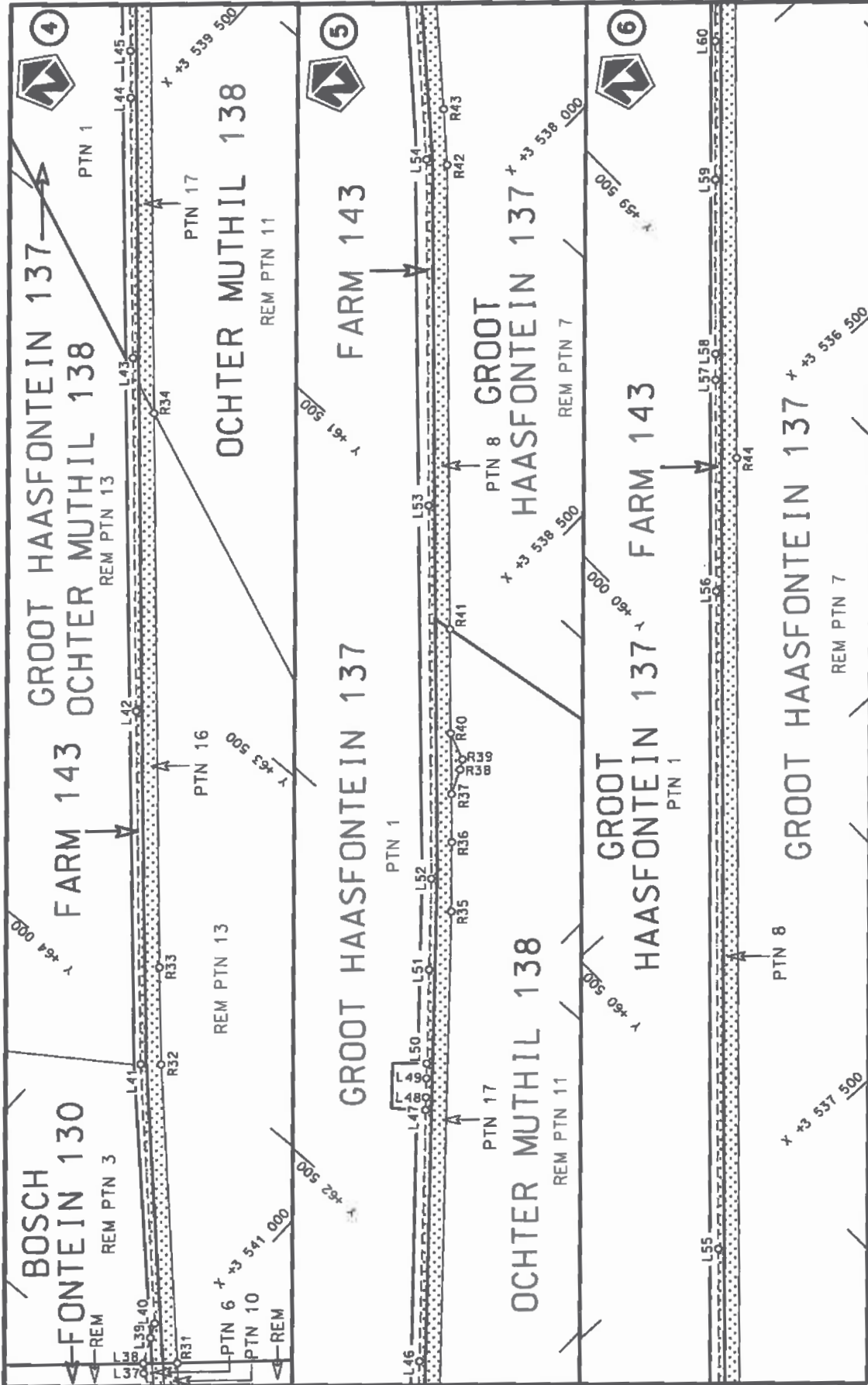
(Nasionale Pad R61 Seksie 4: Tarkastad – Queenstown)
MINISTER VAN VERVOER

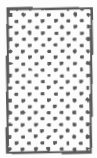


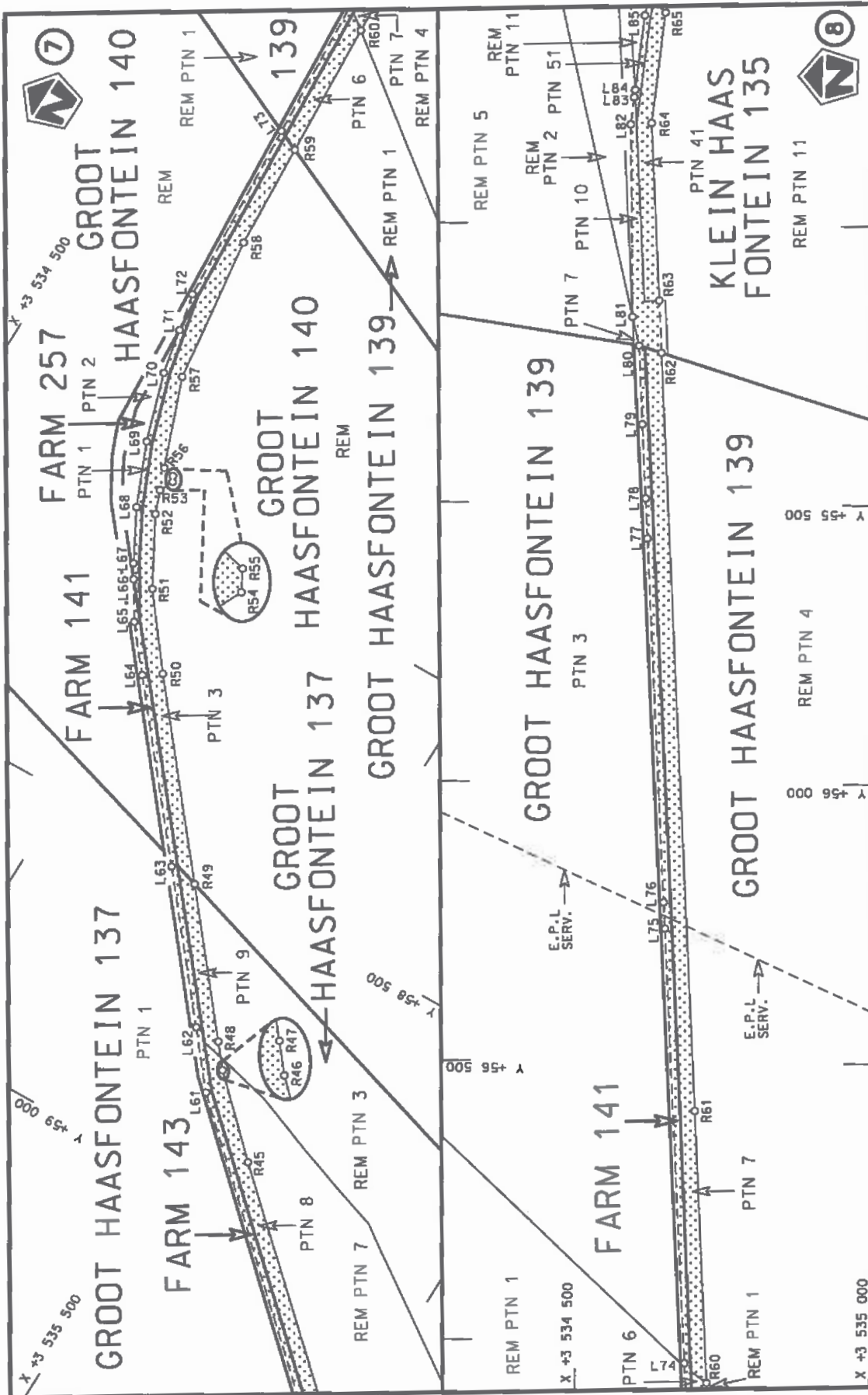
<p>Die Suid-Afrikaanse Nasionale Padagentskap MSB Bpk The South African National Roads Agency SOC Ltd</p>	<p>Die figuur getoon The figure shown</p>	<p>stelt die padreserwe voor van 'n gedeelte represents the road reserve of a portion van Nasionale Roete R61 of National Route</p>	<p>Vel Sheet 1 of 19 Plan P989/17</p>
---	---	---	---



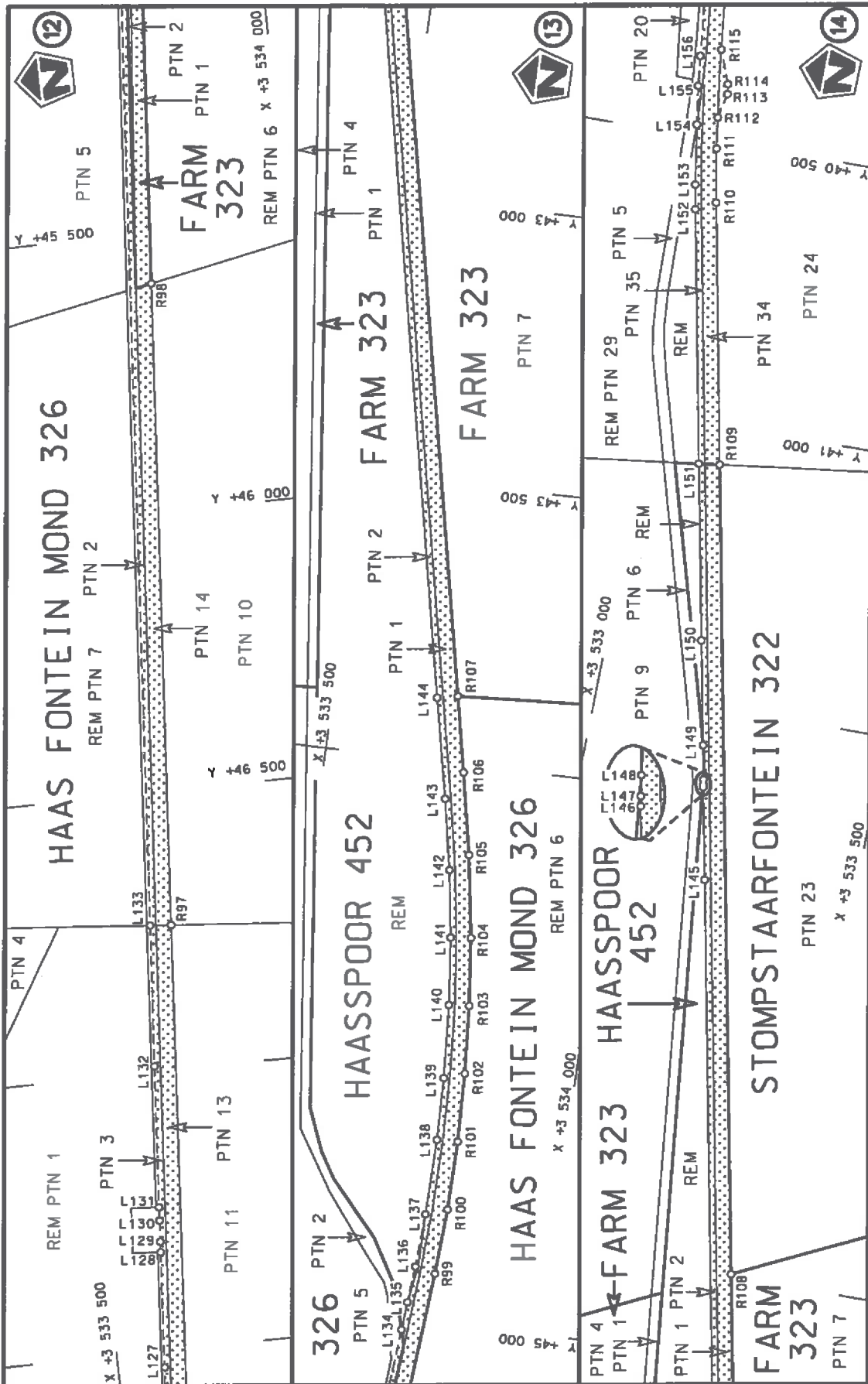
<p>Die Suid Afrikaanse Nasionale Podagentskap MSB Bpk The South African National Roads Agency SOC Ltd</p>	<p>Die figuur getoon The figure shown</p> 	<p>stelt die padreserwe voor van 'n gedeelte represents the road reserve of a portion van Nasionale Roete R61 of National Route</p>	<p>Vel Sheet 2 of 19</p> <p>Plan P989/17</p>
---	---	---	--



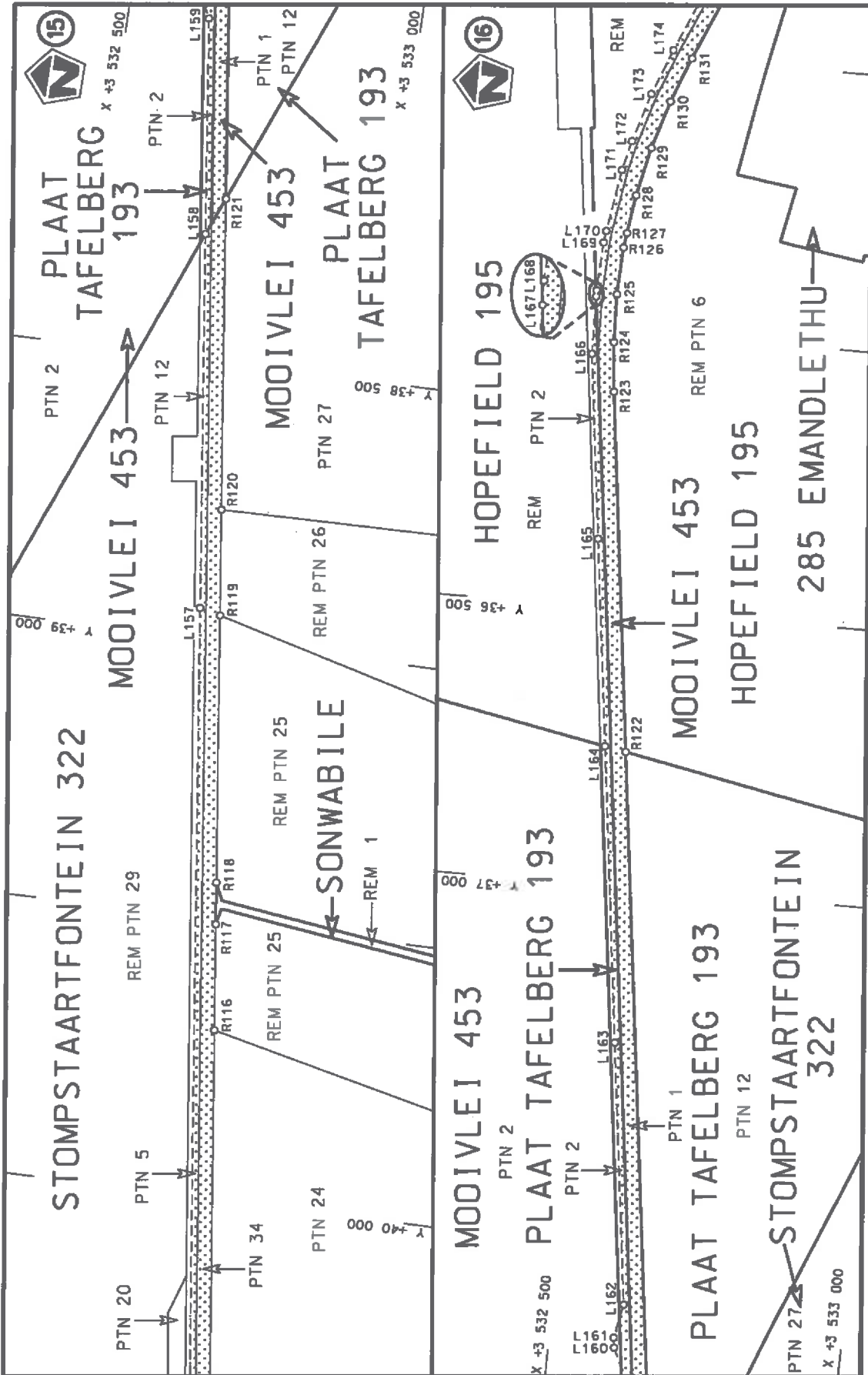
<p>Die Suid Afrikaanse Nasionale Padagentskap MSB Bpk The South African National Roads Agency SOC Ltd</p>	<p>Die figuur getoon The figure shown</p> 	<p>stel die padreserwe voor van 'n gedeelte represents the road reserve of a portion van Nasionale Roete R61 of National Route</p>	<p>Vel Sheet 3 of 19 Plan P989/17</p>
---	---	--	---



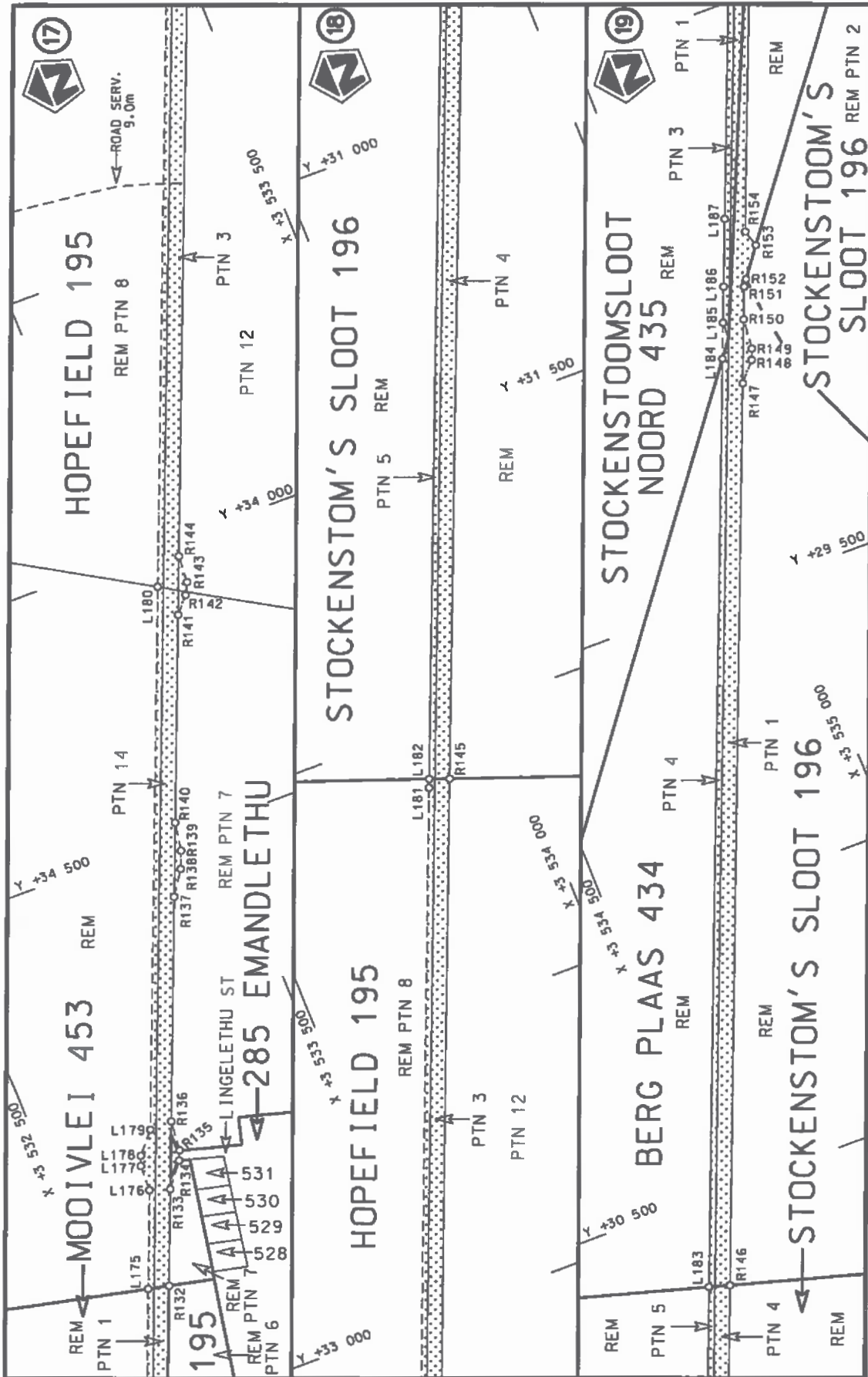
<p>Die Suid Afrikaanse Nasionale Padagentskop MSB Bpk The South African National Roads Agency SOC Ltd</p>	<p>Die figuur getoon The figure shown</p>	<p>stelt die padreserwe voor van 'n gedeelte represents the road reserve of a portion van Nasionale Roete R61 of National Route</p>	<p>Vel Sheet 4 of 19 Plan P989/17</p>
		<p>4</p>	<p>4</p>



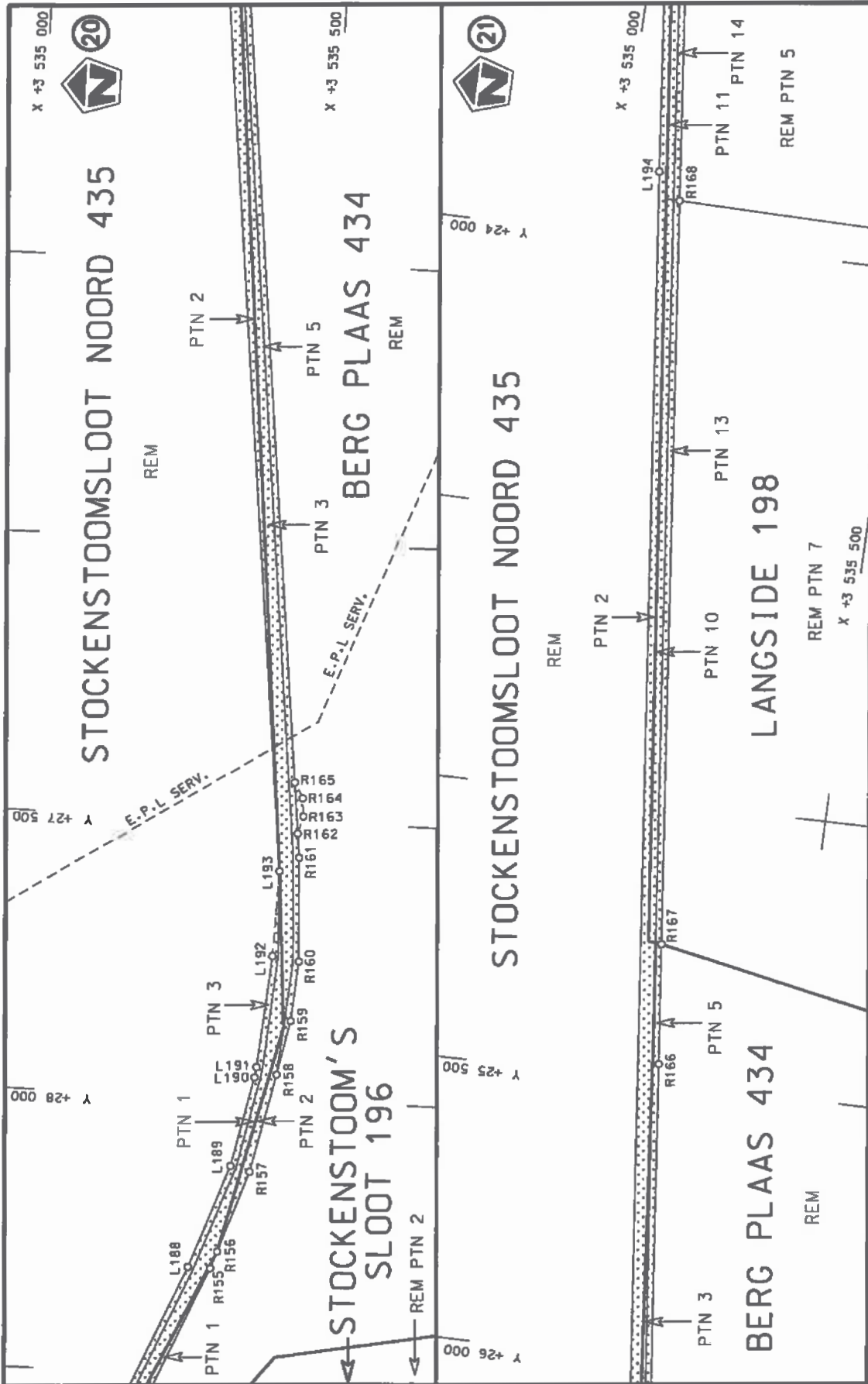
<p>Die Suid Afrikaanse Nasionale Padagentskap MSB Bpk</p>	<p>Die figuur getoon</p>	<p>stel die padreserwe voor van 'n gedeelte</p>	<p>Val Sheet 6 of 19</p>
<p>The South African National Roads Agency SOC Ltd</p>	<p>The figure shown</p>	<p>represents the road reserve of a portion</p>	<p>Plan P989/17</p>
<p></p>	<p></p>	<p>van Nasionale Route R61</p>	<p>Seksie 4</p>
<p></p>	<p></p>	<p>of National Route</p>	<p>Section</p>



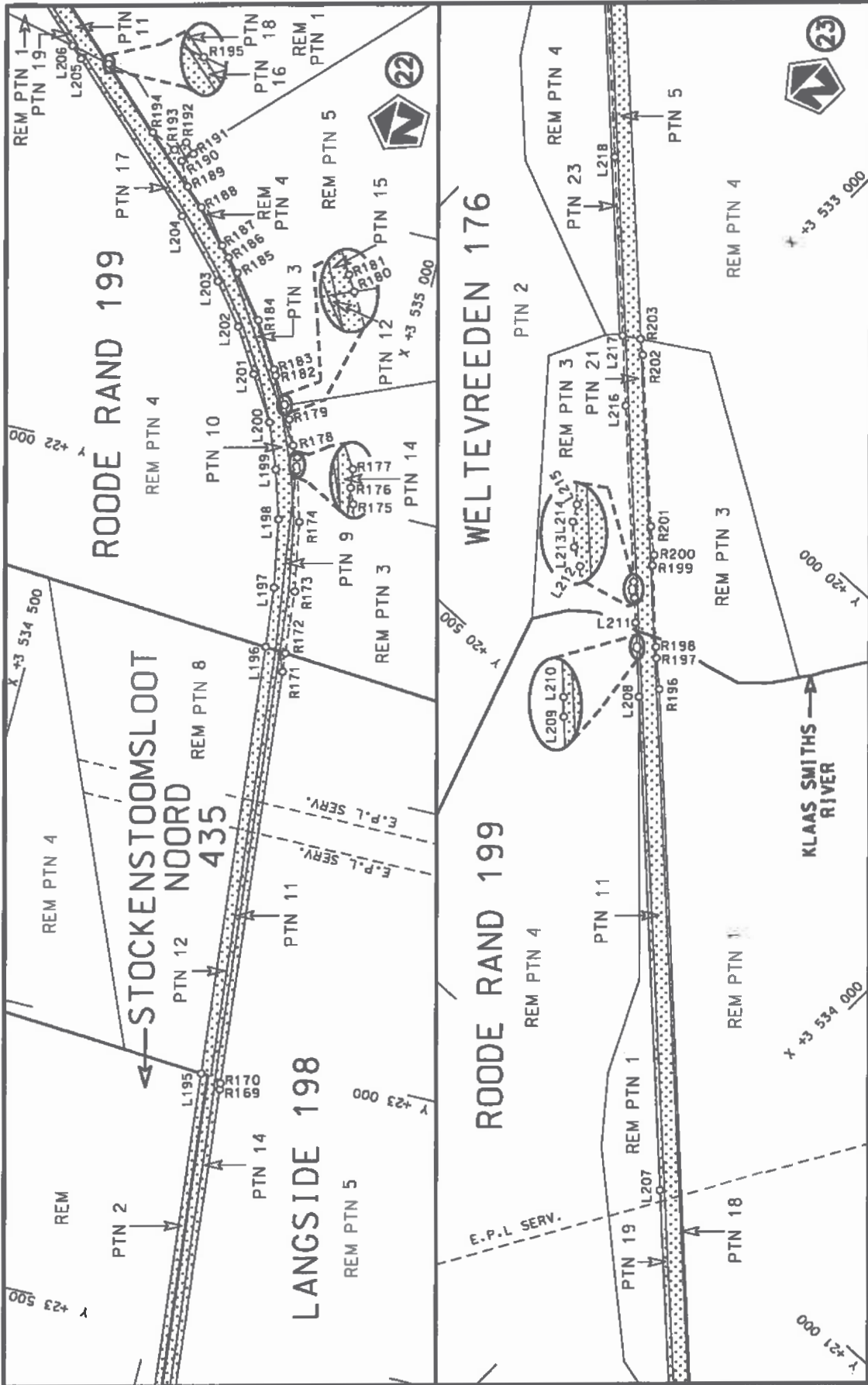
<p>Die Suid Afrikaanse Nasionale Padagentskap MSB Bpk The South African National Roads Agency SOC Ltd</p>	<p>Die figuur getoon The figure shown</p>	<p>Vel Sheet 7 of 19 Plan P989/17</p>
<p>ste die padreserwe voor van 'n gedeelte represents the road reserve of a portion van Nasionale Roete R61 Seksie of National Route R61 Section</p>	<p>4</p>	<p>4</p>



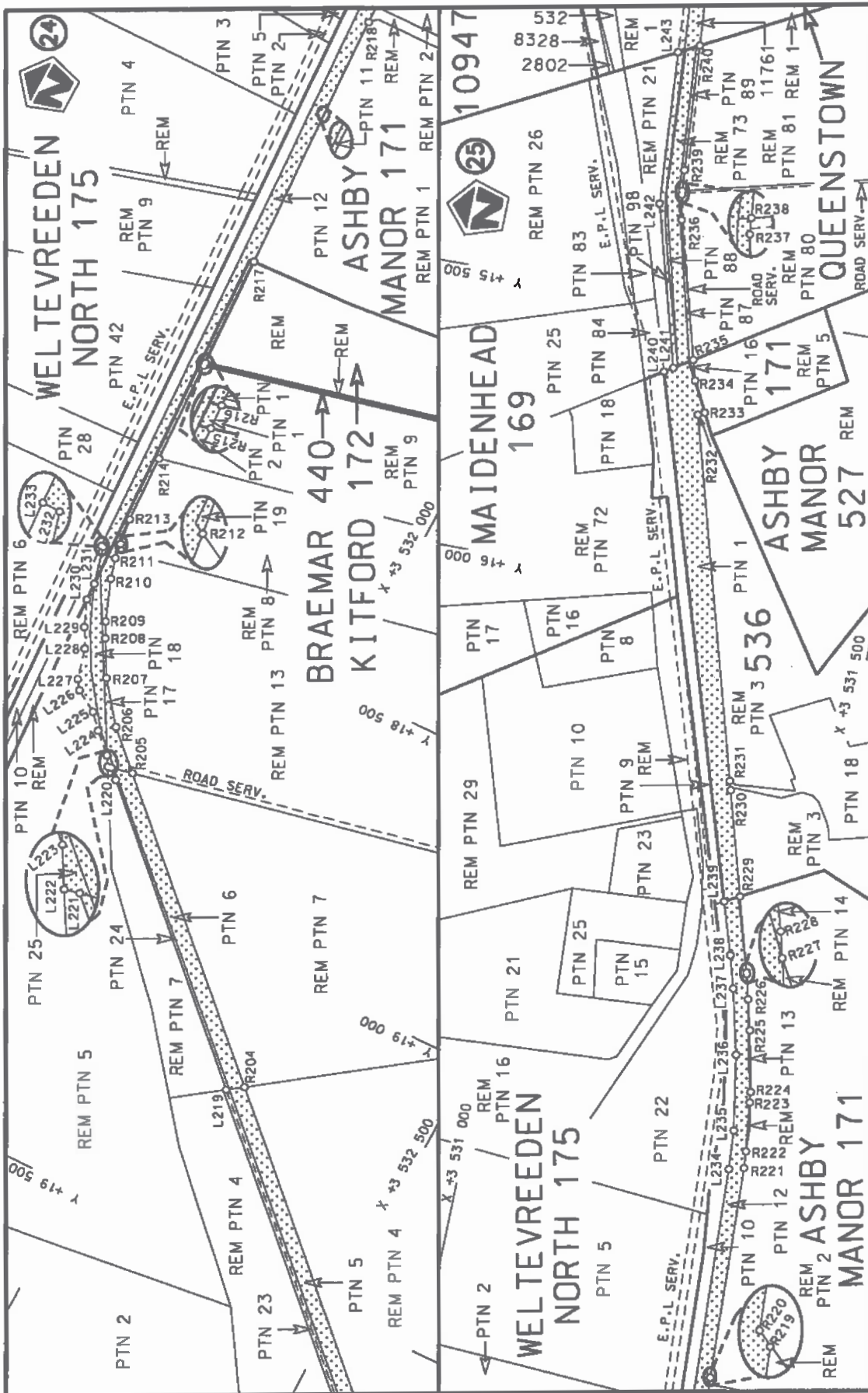
<p>Die Suid Afrikaanse Nasionale Padagentskap MSB Bpk The South African National Roads Agency SOC Ltd</p>	<p>Die figuur getoon The figure shown</p>	<p>stel die podreserwe voor van 'n gedeelte represents the road reserve of a portion van Nasionale Roete R61 of National Route</p>
<p>Vel Sheet 8 of 19</p>	<p>Seksie R61 Section 4</p>	<p>Plan P989/17</p>



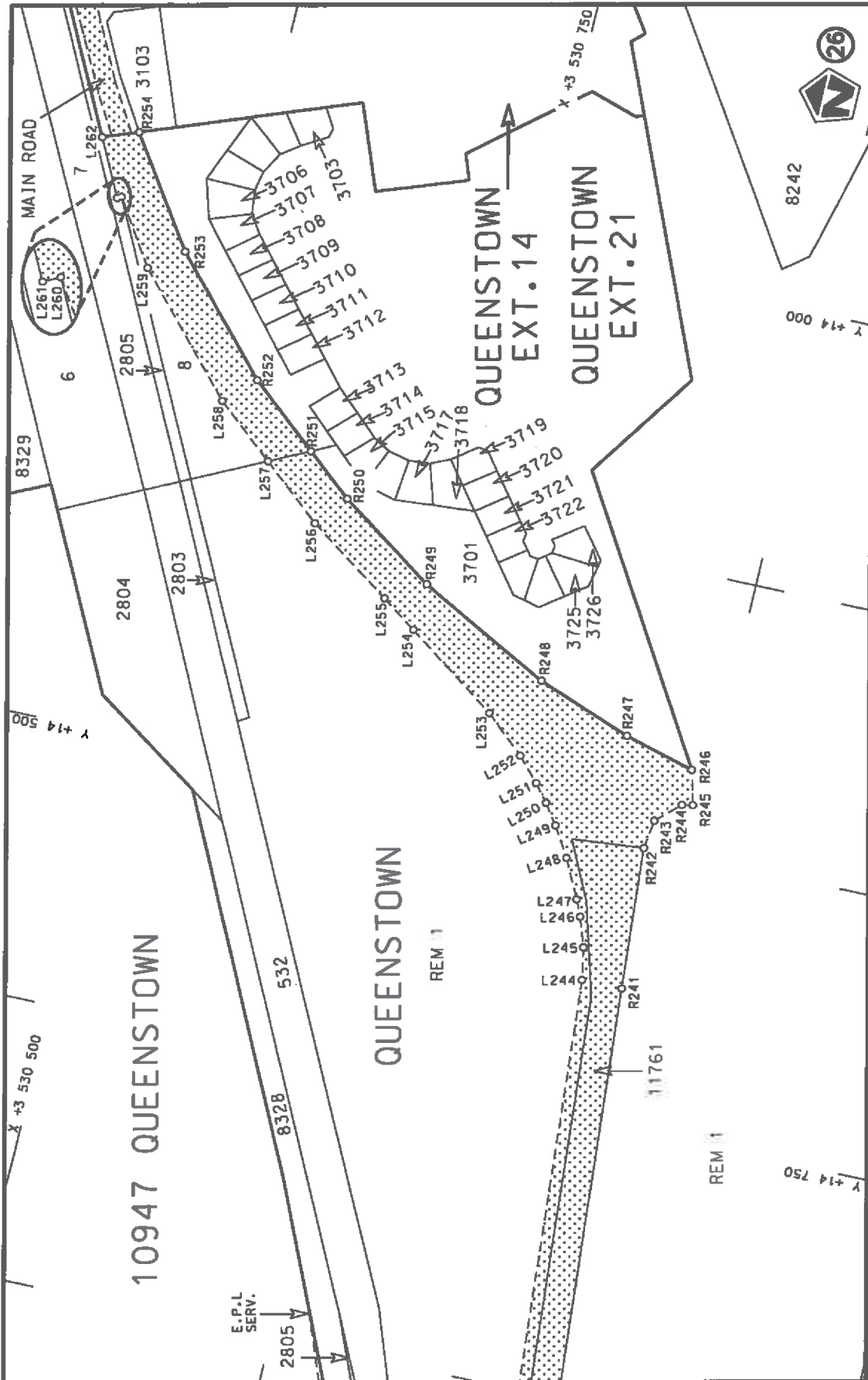
<p>Die Suid Afrikaanse Nasionale Padagentskap MSB Bpk The South African National Roads Agency SOC Ltd</p>	<p>Die figuur getoon The figure shown</p>	<p>stiel die padreserwe voor 'n gedeelte represents the road reserve of a portion van Nasionale Roete R61 of National Route</p>	<p>Vel Sheet 9 of 19 Plan P989/17</p>
---	---	---	---



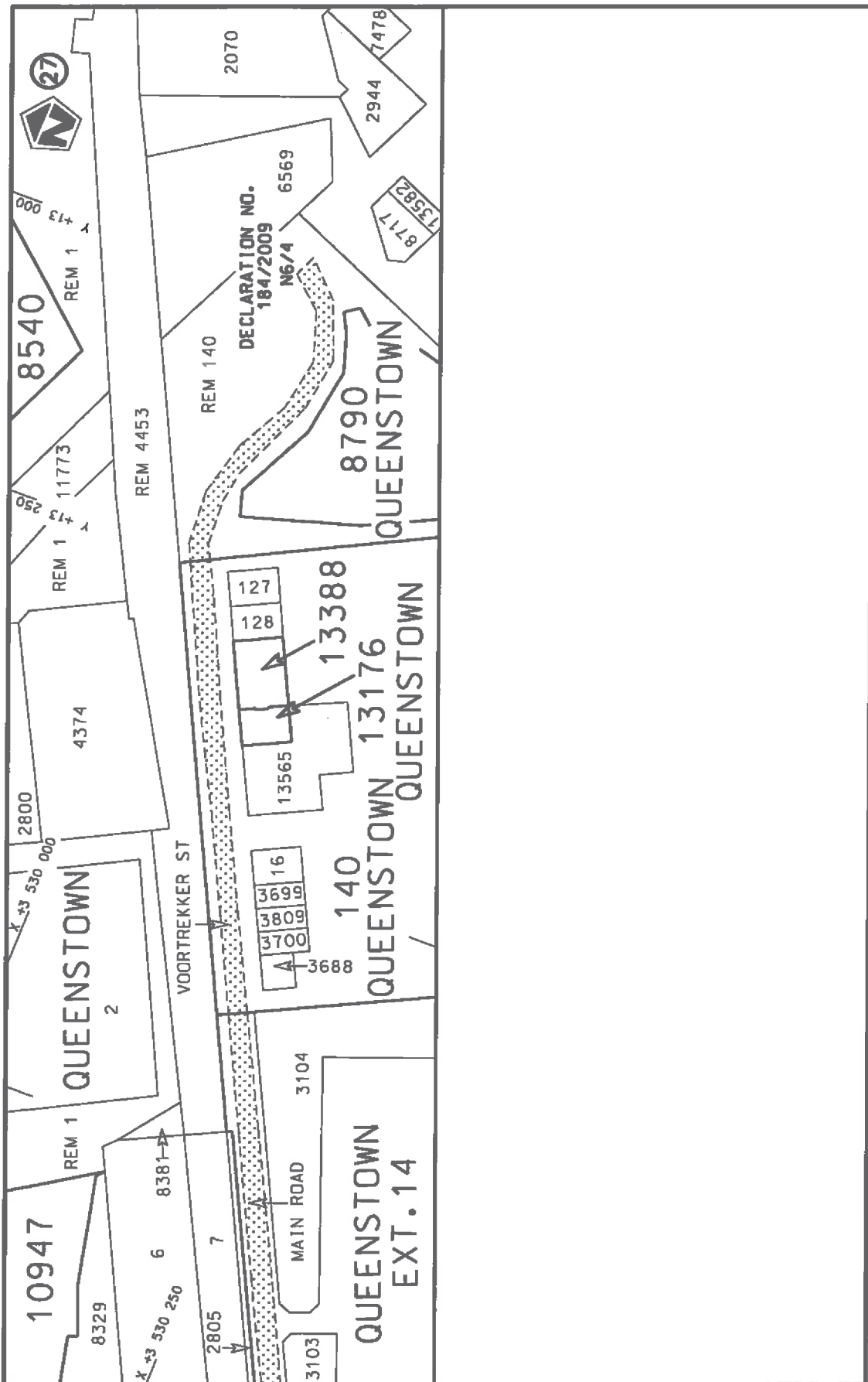
<p>Die Suid Afrikaanse Nasionale Padogenskap MSB Bpk The South African National Roads Agency SOC Ltd</p>	<p>Die figuur getoon The figure shown</p>	<p>stelt die padreserwe voor van 'n gedeelte represents the road reserve of a portion van Nasionale Roete R61 of National Route</p>
<p>Vel Sheet 10 of 19 Plan P989/17</p>	<p>4 Seksie Section</p>	<p>4 Seksie Section</p>

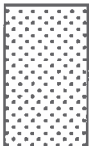


<p>Die Suid Afrikaanse Nasionale Padagentskap MSB Bpk The South African National Roads Agency SOC Ltd</p>	<p>Die figuur getoon The figure shown</p>	<p>steidie padreserwe voor 'n gedeelte represents the road reserve of a portion van Nasionale Roete R61 of National Route</p>	<p>Seksie Section</p>	<p>4</p>	<p>Plan P989/17</p>
		<p>Vel Sheet</p>	<p>11 of 19</p>		



<p>Die Suid Afrikaanse Nasionale Padtoetskapp MSB Bpk The South African National Roads Agency SOC Ltd</p>	<p>Die figuur getoon The figure shown</p>	<p>stel die padreserwe voor van 'n gedeelte represents the road reserve of a portion van Nasionale Roete R61 of National Route</p>	<p>Vel van Sheet 12 of 19</p>
<p>Plan P989/17</p>	<p>Seksie 4</p>	<p>Section</p>	<p>Plan P989/17</p>



<p>Die Suid Afrikaanse Nasionale Padagentskap MSB Bpk The South African National Roads Agency SOC Ltd</p>	<p>Die figuur getoon The figure shown</p> 	<p>stelt die padreserwe voor van 'n gedeelte represents the road reserve of a portion van Nasionale Roete R61 Seksie 4 of National Route Section</p>	<p>Vel Sheet 13 of 19 Plan P989/17</p>
---	---	--	--

PADRESERWE KOÖRDINATE / ROAD RESERVE CO-ORDINATES											
LINKERKANT/LEFT HAND SIDE					REGTERKANT/RIGHT HAND SIDE						
	Y		X	WG 27°		Y		X			
L1	69	443.73	3	543	103.76	R1	69	460.95	3	543	128.15
L2	69	407.85	3	543	094.01	R2	69	454.33	3	543	132.90
L3	69	308.70	3	543	067.08	R3	69	368.73	3	543	109.76
L4	69	228.13	3	543	044.93	R4	69	230.23	3	543	073.86
L5	69	201.41	3	543	037.68	R5	69	190.44	3	543	063.55
L6	69	175.09	3	543	030.66	R6	69	121.63	3	543	044.12
L7	69	114.94	3	543	014.86	R7	69	108.12	3	543	040.31
L8	69	116.24	3	543	010.03	R8	69	106.83	3	543	045.13
L9	68	976.87	3	542	973.42	R9	68	914.41	3	542	990.80
L10	68	919.81	3	542	955.73	R10	68	810.43	3	542	986.33
L11	68	809.62	3	542	953.84	R11	68	621.91	3	543	011.29
L12	68	716.55	3	542	964.62	R12	68	523.20	3	543	019.71
L13	68	678.76	3	542	964.48	R13	68	350.15	3	543	043.18
L14	68	616.25	3	542	964.24	R14	68	259.11	3	543	055.65
L15	67	853.81	3	543	067.34	R15	67	918.80	3	543	101.62
L16	67	495.57	3	543	123.42	R16	67	408.33	3	543	172.68
L17	67	405.02	3	543	137.60	R17	67	284.59	3	543	178.68
L18	67	284.65	3	543	143.44	R18	67	222.79	3	543	175.46
L19	67	226.08	3	543	140.43	R19	67	161.24	3	543	168.16
L20	67	200.97	3	543	136.43	R20	67	048.86	3	543	143.88
L21	67	154.10	3	543	119.18	R21	66	986.09	3	543	123.57
L22	67	122.40	3	543	113.16	R22	66	875.80	3	543	075.07
L23	67	071.90	3	543	111.94	R23	66	795.98	3	543	028.56
L24	66	999.16	3	543	089.17	R24	66	756.47	3	543	000.77
L25	66	904.07	3	543	048.66	R25	66	733.17	3	542	983.40
L26	66	873.33	3	543	035.56	R26	66	620.96	3	542	893.50
L27	66	786.62	3	542	981.88	R27	65	456.37	3	541	949.67
L28	66	754.30	3	542	955.70	R28	65	033.88	3	541	607.27
L29	65	475.65	3	541	920.16	R29	64	987.28	3	541	567.55
L30	65	056.33	3	541	579.86	R30	64	896.85	3	541	485.83
L31	64	988.19	3	541	521.16	R31	64	420.36	3	541	020.82
L32	64	948.37	3	541	482.99	R32	64	036.20	3	540	645.92
L33	64	902.38	3	541	438.91	R33	63	907.14	3	540	528.58
L34	64	672.24	3	541	217.60	R34	63	167.19	3	539	864.78
L35	64	505.75	3	541	055.30	R35	62	006.77	3	538	823.79
L36	64	493.76	3	541	031.99	R36	61	915.73	3	538	739.10
L37	64	471.88	3	540	989.48	R37	61	853.10	3	538	679.50
L38	64	459.04	3	540	977.01	R38	61	810.99	3	538	660.22
L39	64	416.40	3	540	956.14	R39	61	795.38	3	538	650.55
L40	64	392.19	3	540	944.39	R40	61	774.88	3	538	603.91
L41	64	058.72	3	540	619.28	R41	61	639.43	3	538	474.70
L42	63	588.24	3	540	194.84	R42	61	036.61	3	537	899.64
L43	63	116.21	3	539	771.42	R43	60	967.76	3	537	826.61
L44	62	768.68	3	539	459.68	R44	59	729.08	3	536	493.95
L45	62	705.83	3	539	403.32	R45	58	906.91	3	535	608.03
L46	62	631.60	3	539	336.73	R46	58	788.29	3	535	485.99
L47	62	295.94	3	539	035.64	R47	58	787.67	3	535	485.49
L48	62	279.23	3	539	020.65	R48	58	747.68	3	535	452.97
L49	62	253.61	3	538	997.68	R49	58	526.71	3	535	272.50
L50	62	233.71	3	538	979.82	R50	58	231.95	3	535	031.30
L51	62	108.49	3	538	867.49	R51	58	110.47	3	534	937.41

Vel	14	Van 19	P989/17
Sheet		of	

PADRESERWE KOÖRDINATE / ROAD RESERVE CO-ORDINATES											
LINKERKANT/LEFT HAND SIDE					REGTERKANT/RIGHT HAND SIDE						
	Y		X	WG 27°	Y		X				
L52	61	986.85	3	538	758.39	R52	57	993.10	3	534	872.38
L53	61	502.23	3	538	296.24	R53	57	952.38	3	534	856.76
L54	61	053.07	3	537	867.51	R54	57	929.10	3	534	867.58
L55	60	720.56	3	537	509.42	R55	57	919.68	3	534	862.59
L56	59	917.43	3	536	644.63	R56	57	914.70	3	534	842.31
L57	59	659.20	3	536	366.87	R57	57	759.71	3	534	784.14
L58	59	627.46	3	536	332.74	R58	57	500.25	3	534	750.07
L59	59	414.45	3	536	103.64	R59	57	313.78	3	534	738.75
L60	59	245.04	3	535	921.46	R60	57	073.92	3	534	724.18
L61	58	836.67	3	535	482.33	R61	56	586.84	3	534	694.60
L62	58	745.07	3	535	407.35	R62	55	229.30	3	534	610.23
L63	58	519.68	3	535	222.59	R63	55	135.48	3	534	604.40
L64	58	251.41	3	535	002.66	R64	54	817.65	3	534	584.64
L65	58	176.68	3	534	941.50	R65	54	619.48	3	534	604.42
L66	58	111.73	3	534	901.07	R66	54	480.90	3	534	633.90
L67	58	087.49	3	534	885.98	R67	53	759.63	3	534	839.42
L68	57	998.77	3	534	838.55	R68	53	706.63	3	534	854.74
L69	57	889.41	3	534	792.25	R69	53	018.38	3	535	053.65
L70	57	769.71	3	534	753.61	R70	52	881.06	3	535	076.05
L71	57	690.36	3	534	736.61	R71	52	760.19	3	535	087.20
L72	57	623.90	3	534	722.37	R72	52	544.90	3	535	072.98
L73	57	296.52	3	534	701.85	R73	52	421.33	3	535	046.78
L74	57	038.97	3	534	685.71	R74	52	419.90	3	535	046.39
L75	56	260.96	3	534	637.01	R75	52	372.13	3	535	033.47
L76	56	213.89	3	534	634.07	R76	52	251.31	3	534	988.98
L77	55	562.06	3	534	593.31	R77	52	150.48	3	534	940.22
L78	55	490.31	3	534	588.83	R78	52	100.70	3	534	933.92
L79	55	357.52	3	534	580.53	R79	52	084.08	3	534	925.82
L80	55	216.50	3	534	572.22	R80	52	044.64	3	534	889.03
L81	55	165.41	3	534	560.07	R81	51	997.76	3	534	866.36
L82	54	820.25	3	534	549.54	R82	51	986.26	3	534	860.80
L83	54	771.53	3	534	554.39	R83	51	975.52	3	534	855.61
L84	54	758.43	3	534	555.69	R84	51	832.32	3	534	786.36
L85	54	624.85	3	534	568.97	R85	51	820.15	3	534	780.47
L86	54	469.76	3	534	599.14	R86	51	657.43	3	534	701.78
L87	53	713.77	3	534	816.55	R87	51	624.67	3	534	686.37
L88	53	009.63	3	535	019.79	R88	50	742.06	3	534	252.10
L89	52	758.54	3	535	052.08	R89	50	617.48	3	534	195.63
L90	52	550.78	3	535	038.30	R90	50	490.16	3	534	149.56
L91	52	407.17	3	535	003.69	R91	50	361.38	3	534	111.29
L92	52	398.00	3	535	000.64	R92	48	537.47	3	533	592.71
L93	52	261.49	3	534	955.30	R93	48	472.08	3	533	576.65
L94	52	227.40	3	534	938.85	R94	48	413.43	3	533	567.12
L95	52	200.49	3	534	913.00	R95	48	358.88	3	533	562.23
L96	52	183.24	3	534	904.69	R96	48	221.57	3	533	562.29
L97	52	167.46	3	534	897.08	R97	46	740.26	3	533	672.05
L98	52	133.76	3	534	891.95	R98	45	589.59	3	533	757.60
L99	52	127.88	3	534	890.84	R99	44	913.20	3	533	807.74
L100	52	021.19	3	534	839.36	R100	44	796.39	3	533	814.17
L101	51	868.13	3	534	765.52	R101	44	673.12	3	533	815.03
L102	51	839.98	3	534	751.87	R102	44	550.50	3	533	811.25

Vel 15 Van 19
Sheet of

P989/17

PADRESERWE KOÖRDINATE / ROAD RESERVE CO-ORDINATES											
LINKERKANT/LEFT HAND SIDE					REGTERKANT/RIGHT HAND SIDE						
	Y		X	WG 27°	Y		X				
L103	51	723.53	3	534	695.40	R103	44	429.06	3	533	802.74
L104	51	689.59	3	534	662.44	R104	44	307.30	3	533	789.35
L105	51	669.76	3	534	652.89	R105	44	159.89	3	533	766.43
L106	51	622.65	3	534	646.48	R106	44	014.38	3	533	737.89
L107	51	529.35	3	534	601.24	R107	43	879.69	3	533	710.42
L108	51	478.55	3	534	576.39	R108	42	496.40	3	533	423.49
L109	51	408.36	3	534	541.52	R109	41	071.39	3	533	128.38
L110	51	361.13	3	534	518.96	R110	40	610.15	3	533	032.81
L111	50	678.16	3	534	184.90	R111	40	514.41	3	533	014.90
L112	50	502.70	3	534	115.54	R112	40	459.21	3	533	006.25
L113	50	355.17	3	534	073.57	R113	40	415.02	3	533	014.58
L114	48	938.64	3	533	670.53	R114	40	397.36	3	533	011.78
L115	48	489.96	3	533	542.87	R115	40	338.14	3	532	988.72
L116	48	461.92	3	533	538.58	R116	39	697.26	3	532	906.42
L117	48	435.39	3	533	526.39	R117	39	507.22	3	532	882.02
L118	48	394.18	3	533	507.46	R118	39	432.68	3	532	872.45
L119	48	397.37	3	533	497.79	R119	38	953.40	3	532	810.92
L120	48	375.13	3	533	494.24	R120	38	764.15	3	532	786.61
L121	48	372.07	3	533	503.88	R121	38	206.39	3	532	714.95
L122	48	318.05	3	533	517.95	R122	36	756.40	3	532	528.78
L123	48	309.22	3	533	520.25	R123	36	109.79	3	532	445.67
L124	48	306.34	3	533	520.06	R124	36	020.57	3	532	436.87
L125	48	246.35	3	533	524.51	R125	35	933.90	3	532	433.59
L126	47	809.16	3	533	556.95	R126	35	848.65	3	532	436.76
L127	47	545.81	3	533	576.48	R127	35	822.24	3	532	440.03
L128	47	322.95	3	533	593.02	R128	35	752.99	3	532	448.95
L129	47	304.13	3	533	594.42	R129	35	665.52	3	532	466.43
L130	47	266.27	3	533	597.23	R130	35	578.73	3	532	490.71
L131	47	242.39	3	533	599.00	R131	35	497.99	3	532	519.61
L132	46	989.67	3	533	617.75	R132	35	252.70	3	532	618.19
L133	46	737.22	3	533	636.48	R133	35	090.76	3	532	682.93
L134	45	020.27	3	533	764.34	R134	35	048.08	3	532	715.46
L135	44	970.25	3	533	768.41	R135	35	030.92	3	532	723.08
L136	44	904.81	3	533	773.06	R136	34	976.95	3	532	728.42
L137	44	809.40	3	533	777.84	R137	34	600.67	3	532	878.84
L138	44	674.39	3	533	779.91	R138	34	557.90	3	532	907.31
L139	44	562.89	3	533	776.75	R139	34	527.38	3	532	919.56
L140	44	431.59	3	533	768.01	R140	34	476.53	3	532	928.46
L141	44	310.90	3	533	754.82	R141	34	128.09	3	533	067.75
L142	44	191.25	3	533	736.81	R142	34	099.39	3	533	092.75
L143	44	065.05	3	533	712.73	R143	34	078.62	3	533	103.30
L144	43	886.84	3	533	675.83	R144	34	029.84	3	533	107.03
L145	41	808.62	3	533	245.34	R145	32	104.83	3	533	876.46
L146	41	645.58	3	533	211.57	R146	30	664.10	3	534	453.01
L147	41	641.13	3	533	210.78	R147	29	152.12	3	535	057.41
L148	41	631.83	3	533	209.13	R148	29	118.15	3	535	086.72
L149	41	571.43	3	533	196.80	R149	29	099.19	3	535	094.35
L150	41	387.18	3	533	158.06	R150	29	044.95	3	535	100.25
L151	41	076.03	3	533	093.61	R151	28	989.99	3	535	122.22
L152	40	628.01	3	533	000.83	R152	28	978.50	3	535	129.73
L153	40	584.59	3	532	992.28	R153	28	927.29	3	535	167.72

Vel	16	Van	19	P989/17
Sheet		of		

PADRESERWE KOÖRDINATE / ROAD RESERVE CO-ORDINATES						
LINKERKANT/LEFT HAND SIDE				REGTERKANT/RIGHT HAND SIDE		
	Y	X	WG 27°		Y	X
L154	40 477.78	3 532	974.18	R154	28 897.89	3 535 159.18
L155	40 409.41	3 532	963.01	R155	28 307.60	3 535 395.08
L156	40 355.90	3 532	956.12	R156	28 277.09	3 535 405.53
L157	38 944.73	3 532	775.26	R157	28 131.49	3 535 452.88
L158	38 274.25	3 532	689.15	R158	27 955.04	3 535 489.04
L159	37 887.52	3 532	639.26	R159	27 857.62	3 535 507.43
L160	37 829.82	3 532	612.15	R160	27 750.47	3 535 515.68
L161	37 811.76	3 532	609.97	R161	27 564.00	3 535 505.88
L162	37 751.05	3 532	621.65	R162	27 521.21	3 535 501.17
L163	37 280.75	3 532	560.97	R163	27 489.69	3 535 509.12
L164	36 749.01	3 532	492.37	R164	27 457.31	3 535 506.45
L165	36 376.71	3 532	444.52	R165	27 429.47	3 535 491.06
L166	36 044.74	3 532	401.87	R166	25 467.16	3 535 274.90
L167	35 940.98	3 532	398.78	R167	25 253.28	3 535 251.37
L168	35 929.99	3 532	398.46	R168	23 925.75	3 535 104.85
L169	35 842.56	3 532	401.81	R169	23 066.94	3 535 010.27
L170	35 821.52	3 532	404.02	R170	23 056.31	3 535 008.45
L171	35 709.43	3 532	420.30	R171	22 315.37	3 534 927.05
L172	35 656.12	3 532	432.35	R172	22 281.96	3 534 923.38
L173	35 568.38	3 532	456.82	R173	22 170.77	3 534 911.13
L174	35 486.02	3 532	486.38	R174	22 048.10	3 534 887.41
L175	35 244.83	3 532	582.83	R175	21 959.32	3 534 860.55
L176	35 079.25	3 532	649.03	R176	21 952.38	3 534 857.68
L177	35 033.37	3 532	651.18	R177	21 936.61	3 534 855.37
L178	35 015.99	3 532	658.02	R178	21 917.45	3 534 843.24
L179	34 977.97	3 532	689.56	R179	21 873.90	3 534 825.23
L180	34 068.08	3 533	053.46	R180	21 851.03	3 534 811.72
L181	32 107.26	3 533	837.47	R181	21 849.31	3 534 810.70
L182	32 092.58	3 533	843.34	R182	21 803.04	3 534 783.38
L183	30 654.07	3 534	418.86	R183	21 792.85	3 534 778.25
L184	29 098.19	3 535	041.16	R184	21 713.98	3 534 730.29
L185	29 037.62	3 535	065.38	R185	21 639.99	3 534 674.54
L186	28 977.06	3 535	089.59	R186	21 616.67	3 534 653.77
L187	28 863.53	3 535	134.98	R187	21 598.71	3 534 637.70
L188	28 306.89	3 535	357.44	R188	21 540.77	3 534 586.26
L189	28 122.54	3 535	419.69	R189	21 510.20	3 534 554.68
L190	27 961.75	3 535	452.01	R190	21 468.20	3 534 532.84
L191	27 943.15	3 535	454.51	R191	21 451.03	3 534 549.63
L192	27 742.88	3 535	470.18	R192	21 434.14	3 534 532.49
L193	27 590.00	3 535	474.10	R193	21 451.51	3 534 515.81
L194	23 878.08	3 535	063.80	R194	21 430.44	3 534 472.32
L195	23 046.82	3 534	972.47	R195	21 329.33	3 534 367.98
L196	22 279.17	3 534	888.14	R196	20 359.55	3 533 370.76
L197	22 172.69	3 534	875.45	R197	20 322.50	3 533 328.99
L198	22 052.00	3 534	852.19	R198	20 308.39	3 533 314.40
L199	21 966.32	3 534	825.55	R199	20 206.36	3 533 209.41
L200	21 886.74	3 534	794.19	R200	20 190.67	3 533 198.35
L201	21 809.35	3 534	746.76	R201	20 157.52	3 533 159.18
L202	21 733.22	3 534	699.94	R202	19 943.06	3 532 937.54
L203	21 662.65	3 534	646.65	R203	19 925.06	3 532 915.27
L204	21 563.72	3 534	558.59	R204	19 208.92	3 532 176.25

Vel	17	Van	19	P989/17
Sheet		of		

PADRESERWE KOÖRDINATE / ROAD RESERVE CO-ORDINATES											
LINKERKANT/LEFT HAND SIDE					REGTERKANT/RIGHT HAND SIDE						
	Y		X	WG 27°	Y		X				
L205	21	332.24	3	534	319.68	R205	18	794.87	3	531	750.52
L206	21	312.97	3	534	299.98	R206	18	733.83	3	531	687.76
L207	21	012.14	3	533	989.47	R207	18	663.35	3	531	633.50
L208	20	392.96	3	533	354.68	R208	18	601.03	3	531	598.96
L209	20	332.49	3	533	292.68	R209	18	573.83	3	531	586.02
L210	20	329.30	3	533	289.62	R210	18	501.90	3	531	558.78
L211	20	300.41	3	533	259.12	R211	18	465.95	3	531	548.73
L212	20	269.50	3	533	227.22	R212	18	439.25	3	531	545.00
L213	20	263.10	3	533	216.30	R213	18	392.98	3	531	538.53
L214	20	259.13	3	533	212.20	R214	18	274.06	3	531	532.94
L215	20	249.31	3	533	206.38	R215	18	092.12	3	531	524.39
L216	20	028.92	3	532	978.91	R216	18	086.53	3	531	524.12
L217	19	941.37	3	532	888.55	R217	17	888.87	3	531	514.83
L218	19	717.79	3	532	657.76	R218	17	419.48	3	531	492.77
L219	19	226.91	3	532	151.07	R219	17	376.40	3	531	490.75
L220	18	818.45	3	531	730.91	R220	17	375.98	3	531	490.31
L221	18	802.21	3	531	714.25	R221	16	997.33	3	531	474.25
L222	18	803.56	3	531	707.56	R222	16	967.66	3	531	471.54
L223	18	786.10	3	531	697.74	R223	16	880.55	3	531	461.09
L224	18	753.32	3	531	664.14	R224	16	862.02	3	531	458.87
L225	18	727.37	3	531	640.62	R225	16	753.97	3	531	435.94
L226	18	703.37	3	531	602.65	R226	16	700.10	3	531	422.26
L227	18	686.92	3	531	590.94	R227	16	656.29	3	531	411.13
L228	18	632.91	3	531	576.33	R228	16	653.37	3	531	410.39
L229	18	599.17	3	531	558.02	R229	16	522.06	3	531	372.57
L230	18	553.52	3	531	539.33	R230	16	338.66	3	531	319.75
L231	18	522.94	3	531	537.84	R231	16	322.62	3	531	315.13
L232	18	457.21	3	531	520.76	R232	15	690.31	3	531	133.01
L233	18	457.08	3	531	517.42	R233	15	684.62	3	531	144.07
L234	17	004.10	3	531	449.04	R234	15	631.46	3	531	116.46
L235	16	935.09	3	531	443.97	R235	15	595.80	3	531	106.34
L236	16	801.42	3	531	421.34	R236	15	353.92	3	531	037.69
L237	16	686.03	3	531	393.49	R237	15	309.72	3	531	029.47
L238	16	628.50	3	531	376.85	R238	15	302.42	3	531	028.70
L239	16	536.01	3	531	347.78	R239	15	265.65	3	531	024.82
L240	15	625.71	3	531	061.67	R240	15	042.32	3	531	006.31
L241	15	616.29	3	531	075.77	R241	14	628.30	3	530	971.41
L242	15	332.56	3	530	995.25	R242	14	501.09	3	530	960.92
L243	15	060.68	3	530	972.71	R243	14	475.15	3	530	963.95
L244	14	628.19	3	530	936.96	R244	14	456.08	3	530	983.27
L245	14	599.26	3	530	931.48	R245	14	454.34	3	530	992.43
L246	14	573.04	3	530	922.46	R246	14	423.64	3	530	984.34
L247	14	558.49	3	530	916.14	R247	14	405.85	3	530	924.01
L248	14	524.10	3	530	899.12	R248	14	373.52	3	530	842.17
L249	14	497.58	3	530	883.43	R249	14	310.72	3	530	726.05
L250	14	479.61	3	530	870.86	R250	14	250.74	3	530	642.60
L251	14	464.20	3	530	858.69	R251	14	215.74	3	530	602.84
L252	14	443.18	3	530	839.80	R252	14	163.66	3	530	543.69
L253	14	411.59	3	530	805.10	R253	14	064.60	3	530	457.30
L254	14	353.02	3	530	724.19	R254	13	968.53	3	530	394.49
L255	14	330.98	3	530	693.75						

Vel Sheet	18	Van of	19	P989/17
--------------	----	-----------	----	---------

PADRESERWE KOÖRDINATE / ROAD RESERVE CO-ORDINATES						
LINKERKANT/LEFT HAND SIDE				REGTERKANT/RIGHT HAND SIDE		
	Y		X	WG 27°	Y	X
L256	14	278.15	3 530	620.77		
L257	14	232.62	3 530	569.06		
L258	14	188.40	3 530	518.83		
L259	14	085.78	3 530	429.34		
L260	14	028.42	3 530	393.10		
L261	14	030.27	3 530	389.59		
L262	13	979.83	3 530	364.63		

Vel	19	Van	19	P989/17
Sheet		of		