

DEPARTMENT OF TRANSPORT

NO. 364

27 MARCH 2018

**THE SOUTH AFRICAN NATIONAL ROADS
AGENCY SOC LIMITED**

Registration No: 1998/009584/30

DECLARATION AMENDMENT OF NATIONAL ROAD R22 SECTION 5

AMENDMENT OF DECLARATION No. 303 OF 2009.

By virtue of section 40(1)(b) of The South African National Roads Agency Limited and National Roads Act 1998 (Act No. 7 of 1998), I hereby amend Declaration No. 303 of 2009 by substituting it with the subjoined sheets 1 to 15 of Plan No. P971/17.

(National Road R22 Section 5: Phelindaba – Farazela Border Post)



MINISTER OF TRANSPORT

DEPARTEMENT VAN VERVOER

NO. 364

27 MAART 2018

**DIE SUID-AFRIKAANSE NASIONALE
PADAGENTSKAP MSB BEPERK**

Registrasie No: 1998/009584/30

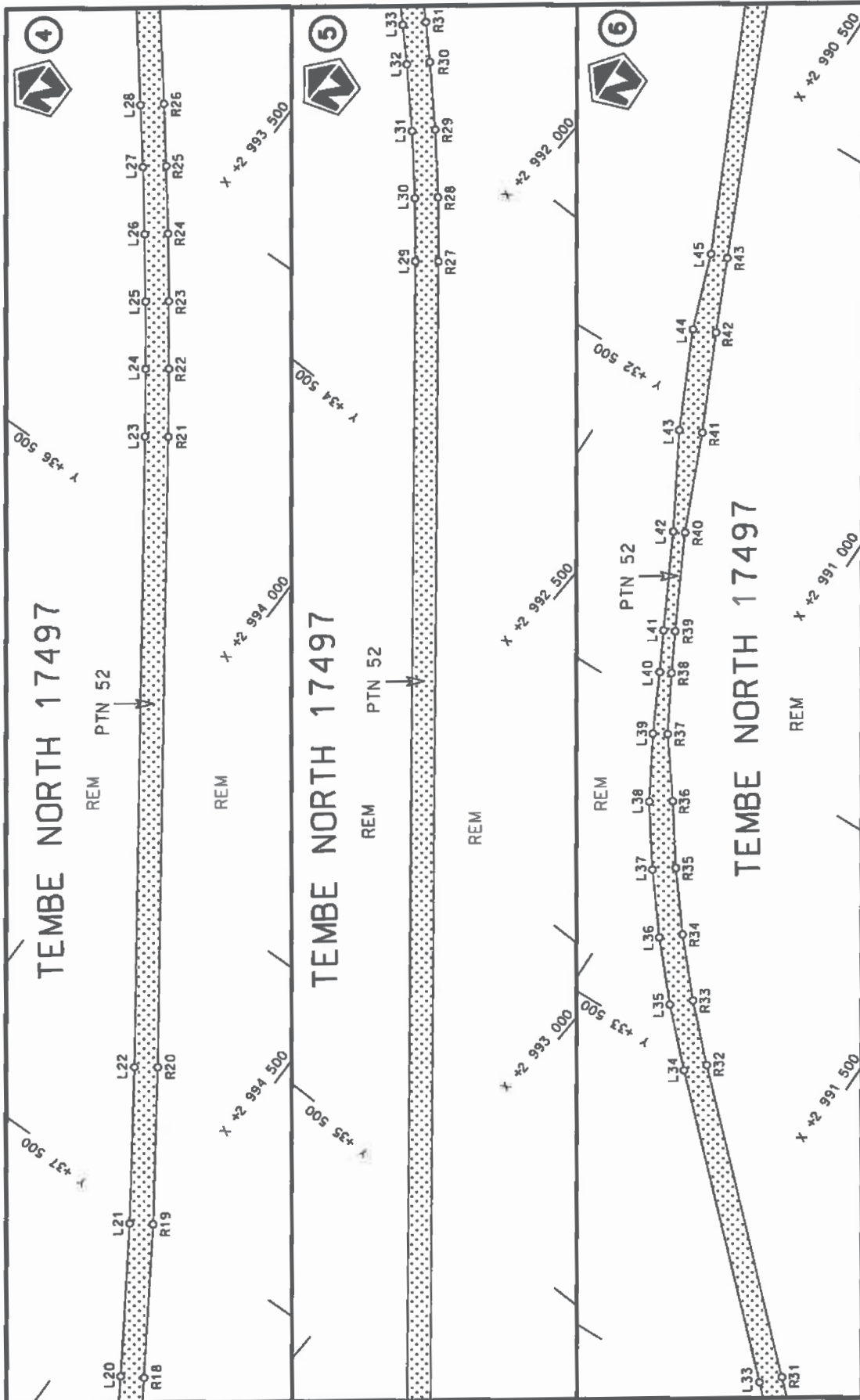
VERKLARING WYSIGING VAN NASIONALE PAD R22 SEKSIE 5

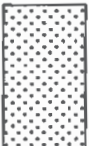
WYSIGING VAN VERKLARING No. 303 VAN 2009.

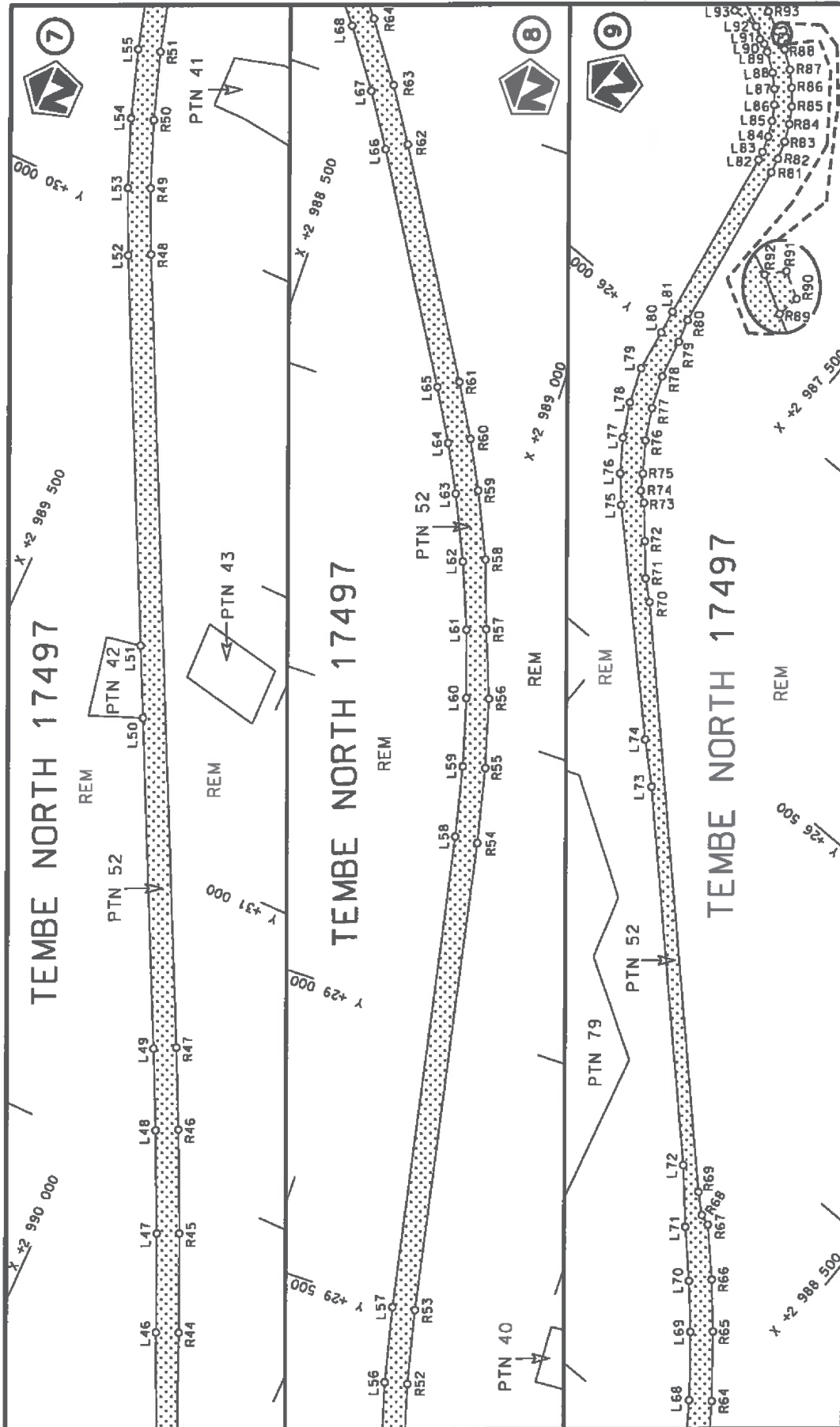
Kragtens Artikel 40(1)(b) van die Suid Afrikaanse Nasionale Padagentskap Beperk en Nasionale Paaie Wet 1998 (Wet No.7 van 1998), wysig ek hiermee Verklaring No. 303 van 2009 deur dit te vervang met meegaande velle 1 tot 15 van Plan No. P971/17.

(Nasionale Pad R22 Seksie 5: Phelindaba – Farazela Grenspos)

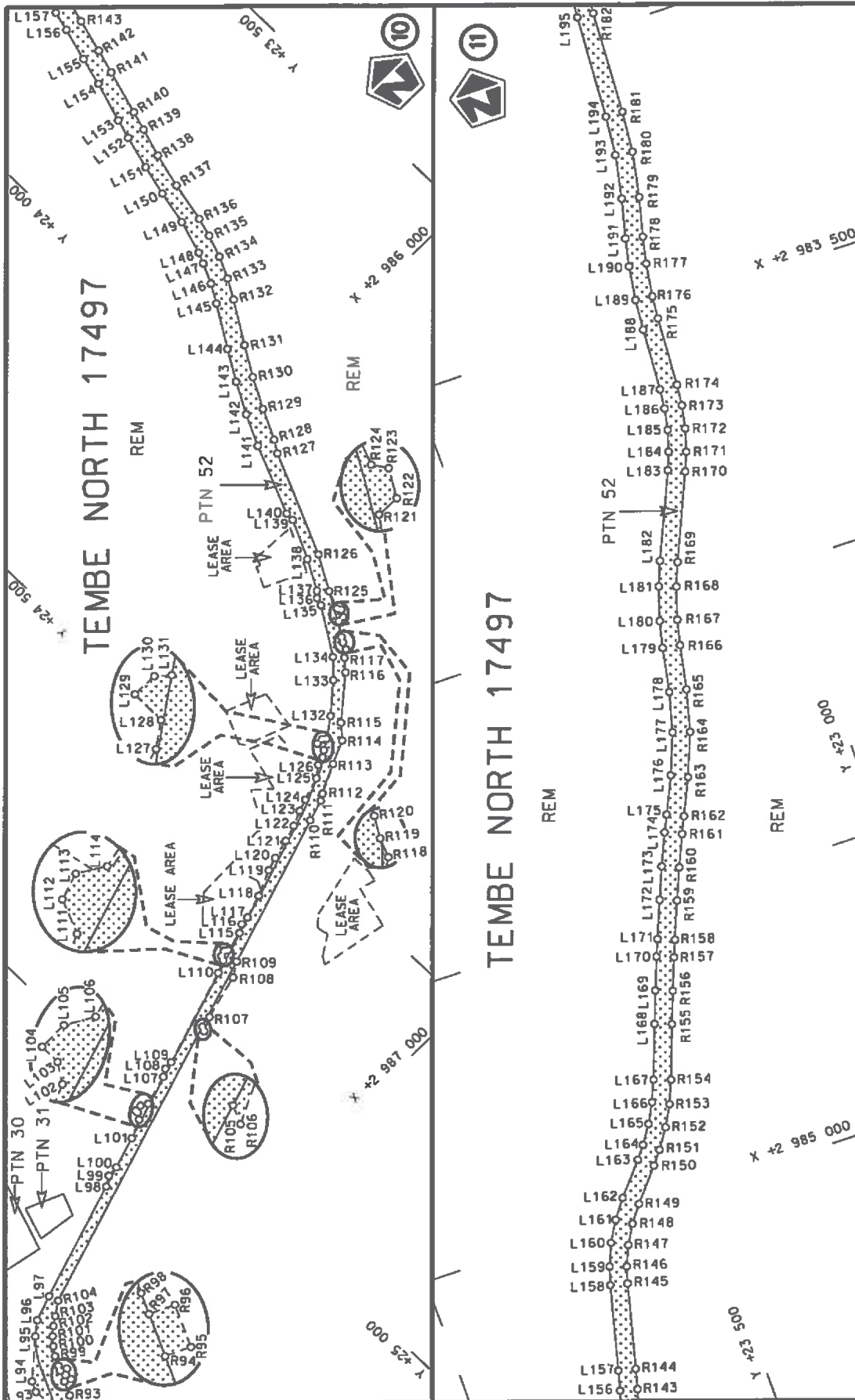
MINISTER VAN VERVOER



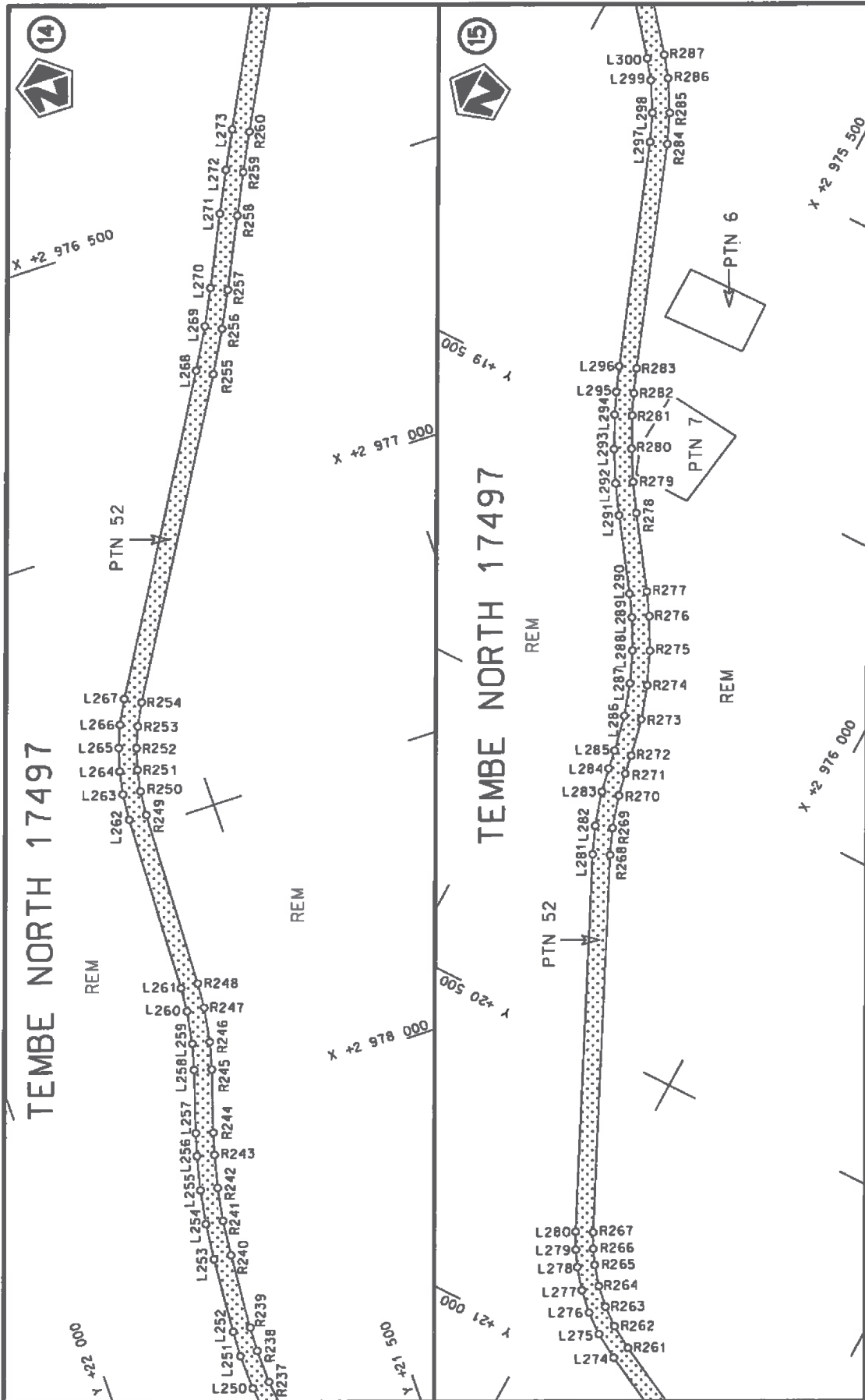
Die Suid Afrikaanse Nasionale Padogentskap MSB Bpk The South African National Roads Agency SOC Ltd	Die figuur getoon The figure shown		stel die padreserwe voor van 'n gedeelte represents the road reserve of a portion van Nasionale Raete R22 of National Route Section	5
	Val Sheet 2 of 15	Plan P971/17		



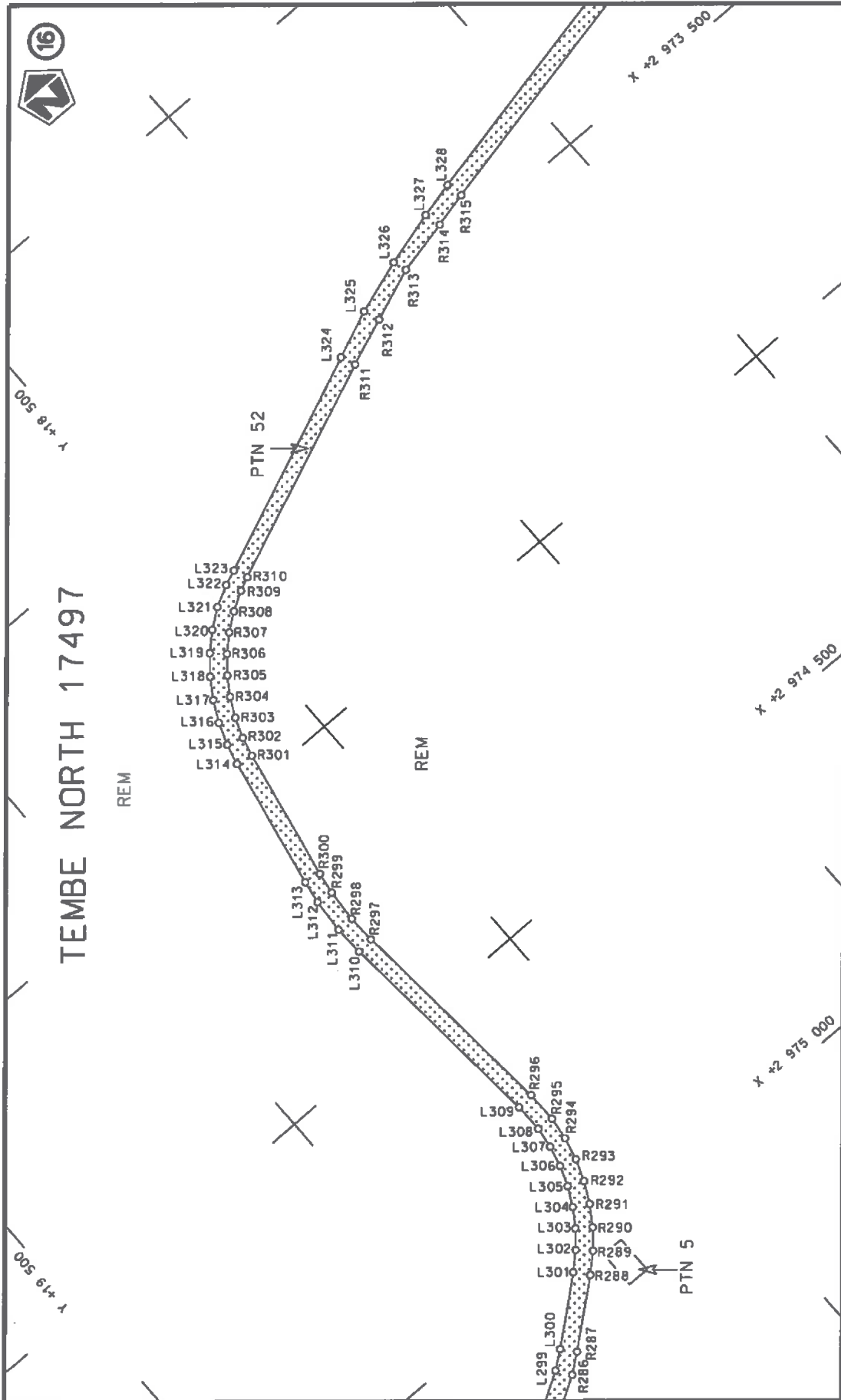
<p>Die Suid Afrikaanse Nasionale Padagentskap MSB Bpk The South African National Roads Agency SOC Ltd</p>	<p>Die figuur getoon The figure shown</p>	<p>steeldie padreserwe voor van 'n gedeelte represents the road reserve of a portion van Nasionale Roete R22 Sektie of National Route Section</p>	<p>Vel Sheet 3 of 15 Plan P971/17</p>
		<p>5</p>	



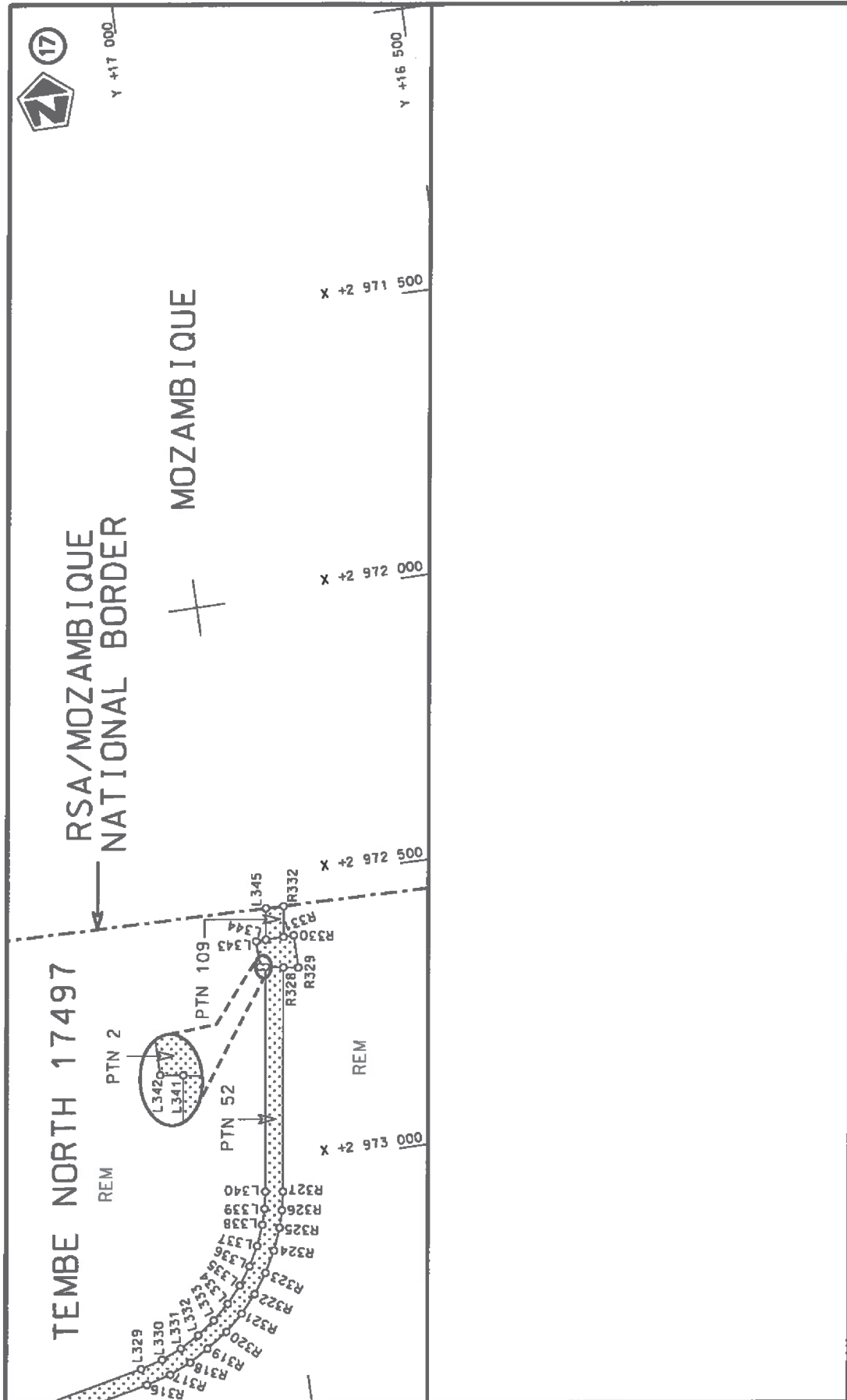
Vel Sheet 4 of 15 Plan P971/17	steldie padreserwe voor van 'n gedeelte represents the road reserve of a portion van Nasionale Roete R22 Sektie of National Route Section 5	Die figuur getoon The figure shown Die Suid Afrikaanse Nasionale Padagentskap MSB Bpk The South African National Roads Agency SOC Ltd
--------------------------------------	--	--

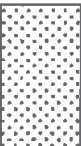


<p>Die Suid Afrikaanse Nasionale Padagentskap MSB Bpk The South African National Roads Agency SOC Ltd</p>	<p>Die figuur getoon The figure shown</p>	<p>Vel Sheet 6 of 15 Plan P971/17</p>
<p>stelt die padreserwe voor van 'n gedeelte represents the road reserve of a portion van Nasionale Roete R22 of National Route Section</p>		<p>5</p>



<p>Die Suid Afrikaanse Nasionale Padagentskap MSB Bpk The South African National Roads Agency SOC Ltd</p>	<p>Die figuur getoon The figure shown</p>	<p>stel die podreserwe voor van 'n gedeelte represents the road reserve of a portion van Nasionale Roete R22 of National Route</p>	<p>Vel Sheet 7 van of 15 Plan P971/17</p>
			<p>5 Seksie Section</p>



<p>Die Suid Afrikaanse Nasionale Podagentenskap MSB Bpk The South African National Roads Agency SOC Ltd</p>	<p>Die figuur getoon The figure shown</p>	 <p>stelt die padreserwe voor van 'n gedeelte represents the road reserve of a portion van Nasionale Roete R22 of National Route R22 Section</p>	<p>Vel Sheet 8 of 15 Plan P971/17</p>
---	---	---	---

PADRESERWE KOÖRDINATE / ROAD RESERVE CO-ORDINATES					
LINKERKANT/LEFT HAND SIDE			REGTERKANT/RIGHT HAND SIDE		
	Y	X	WG 33°	Y	X
L1	44 302.96	2 996 911.15		R1	44 305.19 2 996 951.08
L2	44 252.99	2 996 914.02		R2	44 255.28 2 996 953.95
L3	44 221.36	2 996 885.78		R3	44 155.44 2 996 959.69
L4	44 181.42	2 996 888.08		R4	43 498.16 2 996 997.46
L5	44 153.15	2 996 919.76		R5	43 384.62 2 997 001.14
L6	43 495.86	2 996 957.52		R6	43 263.59 2 996 998.80
L7	43 384.33	2 996 961.14		R7	43 142.86 2 996 990.01
L8	43 265.43	2 996 958.84		R8	43 022.77 2 996 974.80
L9	43 146.82	2 996 950.21		R9	42 903.65 2 996 953.21
L10	43 028.85	2 996 935.27		R10	42 785.86 2 996 925.30
L11	42 911.84	2 996 914.05		R11	42 669.73 2 996 891.15
L12	42 796.12	2 996 886.64		R12	42 573.56 2 996 857.67
L13	42 682.03	2 996 853.09		R13	39 613.88 2 995 752.02
L14	42 587.56	2 996 820.20		R14	39 502.02 2 995 706.80
L15	39 627.88	2 995 714.55		R15	39 392.36 2 995 655.53
L16	39 517.99	2 995 670.13		R16	39 285.59 2 995 598.49
L17	39 410.26	2 995 619.76		R17	39 199.63 2 995 547.03
L18	39 305.37	2 995 563.72		R18	37 736.84 2 994 626.92
L19	39 220.92	2 995 513.17		R19	37 507.65 2 994 478.35
L20	37 758.14	2 994 593.06		R20	37 277.71 2 994 320.14
L21	37 529.87	2 994 445.09		R21	36 363.24 2 993 671.98
L22	37 300.84	2 994 287.51		R22	36 265.11 2 993 601.53
L23	36 386.37	2 993 639.34		R23	36 168.29 2 993 530.25
L24	36 288.64	2 993 569.18		R24	36 072.33 2 993 457.81
L25	36 192.20	2 993 498.19		R25	35 977.24 2 993 384.21
L26	36 096.62	2 993 426.03		R26	35 890.50 2 993 315.47
L27	36 001.90	2 993 352.73		R27	34 207.77 2 991 966.65
L28	35 915.52	2 993 284.26		R28	34 120.29 2 991 894.18
L29	34 232.78	2 991 935.44		R29	34 029.97 2 991 814.14
L30	34 146.30	2 991 863.79		R30	33 942.44 2 991 731.05
L31	34 057.01	2 991 784.66		R31	33 891.93 2 991 680.40
L32	33 970.48	2 991 702.52		R32	33 493.21 2 991 272.44
L33	33 920.53	2 991 652.44		R33	33 409.00 2 991 190.70
L34	33 521.81	2 991 244.48		R34	33 319.41 2 991 112.50
L35	33 436.10	2 991 161.28		R35	33 225.77 2 991 039.19
L36	33 344.90	2 991 081.68		R36	33 128.36 2 990 970.98
L37	33 249.58	2 991 007.05		R37	33 032.51 2 990 899.43
L38	33 150.43	2 990 937.61		R38	32 937.34 2 990 846.61
L39	33 045.16	2 990 877.86		R39	32 871.52 2 990 812.16
L40	32 946.62	2 990 828.89		R40	32 714.71 2 990 731.82
L41	32 880.79	2 990 794.44		R41	32 548.93 2 990 661.71
L42	32 723.67	2 990 713.94		R42	32 386.22 2 990 585.57
L43	32 566.21	2 990 625.64		R43	32 264.22 2 990 530.80
L44	32 402.85	2 990 549.19		R44	31 739.64 2 990 299.51
L45	32 273.32	2 990 503.35		R45	31 581.92 2 990 228.34
L46	31 755.78	2 990 262.91		R46	31 418.96 2 990 151.26
L47	31 598.68	2 990 192.02		R47	31 290.74 2 990 088.16
L48	31 436.28	2 990 115.25		R48	30 056.01 2 989 469.03
L49	31 308.67	2 990 052.40		R49	29 951.77 2 989 420.08
L50	30 794.26	2 989 794.46		R50	29 841.62 2 989 375.26
L51	30 681.65	2 989 737.99		R51	29 729.24 2 989 336.37

Vel	9	Van 15	P971/17
Sheet		of	

PADRESERWE KOÖRDINATE / ROAD RESERVE CO-ORDINATES						
LINKERKANT/LEFT HAND SIDE				REGTERKANT/RIGHT HAND SIDE		
	Y	X	WG 33°	Y	X	
L52	30 073.94	2 989 433.26		R52	29 614.94	2 989 303.52
L53	29 967.83	2 989 383.45		R53	29 488.72	2 989 274.75
L54	29 855.70	2 989 337.82		R54	28 684.67	2 989 115.86
L55	29 741.31	2 989 298.23		R55	28 557.01	2 989 087.15
L56	29 624.96	2 989 264.80		R56	28 440.57	2 989 054.06
L57	29 496.47	2 989 235.51		R57	28 327.80	2 989 010.15
L58	28 686.66	2 989 075.50		R58	28 213.79	2 988 969.54
L59	28 566.91	2 989 048.39		R59	28 104.11	2 988 918.32
L60	28 452.52	2 989 015.89		R60	28 023.72	2 988 876.11
L61	28 340.02	2 988 977.35		R61	27 936.11	2 988 825.28
L62	28 229.74	2 988 932.85		R62	27 574.13	2 988 604.28
L63	28 121.99	2 988 882.54		R63	27 484.63	2 988 546.73
L64	28 043.02	2 988 841.08		R64	27 386.22	2 988 476.23
L65	27 956.95	2 988 791.14		R65	27 291.71	2 988 400.58
L66	27 594.97	2 988 570.14		R66	27 223.55	2 988 340.60
L67	27 507.05	2 988 513.60		R67	27 154.20	2 988 274.32
L68	27 410.37	2 988 444.35		R68	27 148.47	2 988 255.41
L69	27 317.53	2 988 370.03		R69	27 121.20	2 988 224.95
L70	27 250.57	2 988 311.11		R70	26 387.18	2 987 501.48
L71	27 182.44	2 988 245.99		R71	26 359.91	2 987 469.74
L72	27 102.20	2 988 174.62		R72	26 311.24	2 987 427.24
L73	26 632.04	2 987 710.24		R73	26 260.69	2 987 383.45
L74	26 575.53	2 987 648.69		R74	26 247.94	2 987 365.39
L75	26 288.94	2 987 355.13		R75	26 222.71	2 987 349.41
L76	26 247.78	2 987 318.24		R76	26 175.78	2 987 316.07
L77	26 196.94	2 987 282.13		R77	26 125.19	2 987 288.59
L78	26 142.13	2 987 252.36		R78	26 071.68	2 987 267.37
L79	26 084.16	2 987 229.37		R79	26 006.55	2 987 250.91
L80	26 014.00	2 987 216.99		R80	25 968.09	2 987 238.93
L81	25 973.38	2 987 209.40		R81	25 677.22	2 987 186.76
L82	25 674.72	2 987 155.77		R82	25 652.01	2 987 181.12
L83	25 659.94	2 987 152.19		R83	25 621.92	2 987 170.90
L84	25 633.26	2 987 143.12		R84	25 593.27	2 987 157.14
L85	25 607.85	2 987 130.92		R85	25 567.04	2 987 140.85
L86	25 584.09	2 987 115.77		R86	25 541.92	2 987 119.88
L87	25 562.31	2 987 097.88		R87	25 519.95	2 987 096.91
L88	25 542.84	2 987 077.51		R88	25 498.82	2 987 067.48
L89	25 520.92	2 987 047.01		R89	25 491.09	2 987 053.86
L90	25 513.89	2 987 033.90		R90	25 481.32	2 987 055.47
L91	25 511.93	2 987 022.57		R91	25 474.89	2 987 044.29
L92	25 499.16	2 987 003.77		R92	25 482.06	2 987 037.84
L93	25 502.02	2 986 957.01		R93	25 465.86	2 987 003.49
L94	25 493.53	2 986 938.90		R94	25 454.56	2 986 979.53
L95	25 432.55	2 986 886.88		R95	25 443.93	2 986 984.55
L96	25 409.85	2 986 869.29		R96	25 435.40	2 986 966.46
L97	25 365.46	2 986 853.93		R97	25 446.03	2 986 961.45
L98	25 158.11	2 986 787.72		R98	25 441.82	2 986 952.52
L99	25 141.46	2 986 777.43		R99	25 433.69	2 986 936.61
L100	25 121.99	2 986 776.19		R100	25 423.58	2 986 921.73
L101	25 066.79	2 986 758.56		R101	25 411.58	2 986 908.34
L102	25 034.55	2 986 744.51		R102	25 397.91	2 986 896.65

Vel 10 Van 15
Sheet of

P971/17

PADRESERWE KOÖRDINATE / ROAD RESERVE CO-ORDINATES					
LINKERKANT/LEFT HAND SIDE			REGTERKANT/RIGHT HAND SIDE		
	Y	X	WG 33°	Y	X
L103	25 027.38	2 986 733.62		R103	25 382.80 2 986 886.89
L104	25 027.35	2 986 728.82		R104	25 359.97 2 986 871.05
L105	25 015.25	2 986 728.89		R105	24 841.79 2 986 705.61
L106	25 003.70	2 986 735.63		R106	24 845.55 2 986 713.79
L107	24 951.48	2 986 720.62		R107	24 821.35 2 986 702.27
L108	24 938.87	2 986 712.82		R108	24 743.15 2 986 681.68
L109	24 923.85	2 986 711.86		R109	24 718.88 2 986 666.37
L110	24 754.89	2 986 657.91		R110	24 451.36 2 986 580.96
L111	24 733.57	2 986 648.62		R111	24 413.83 2 986 569.72
L112	24 730.35	2 986 640.96		R112	24 402.64 2 986 563.08
L113	24 720.74	2 986 637.85		R113	24 352.54 2 986 538.99
L114	24 714.89	2 986 641.53		R114	24 311.86 2 986 521.00
L115	24 679.35	2 986 634.09		R115	24 290.81 2 986 497.33
L116	24 665.37	2 986 625.61		R116	24 221.80 2 986 440.01
L117	24 650.23	2 986 624.49		R117	24 204.59 2 986 420.30
L118	24 609.42	2 986 611.28		R118	24 192.19 2 986 411.57
L119	24 565.05	2 986 591.53		R119	24 187.33 2 986 399.54
L120	24 541.70	2 986 584.15		R120	24 181.96 2 986 390.78
L121	24 507.22	2 986 576.15		R121	24 165.18 2 986 367.61
L122	24 478.84	2 986 567.04		R122	24 154.65 2 986 368.00
L123	24 452.46	2 986 555.86		R123	24 147.60 2 986 356.07
L124	24 431.54	2 986 548.99		R124	24 151.70 2 986 349.66
L125	24 390.73	2 986 536.30		R125	24 139.31 2 986 318.32
L126	24 371.65	2 986 521.66		R126	24 105.87 2 986 258.84
L127	24 356.95	2 986 517.81		R127	24 028.58 2 986 081.49
L128	24 346.26	2 986 510.26		R128	24 015.42 2 986 060.52
L129	24 345.99	2 986 494.19		R129	23 990.12 2 986 008.15
L130	24 334.45	2 986 494.47		R130	23 961.90 2 985 955.99
L131	24 328.90	2 986 499.50		R131	23 931.67 2 985 905.75
L132	24 294.87	2 986 475.90		R132	23 887.19 2 985 835.53
L133	24 246.21	2 986 434.47		R133	23 867.80 2 985 801.96
L134	24 217.61	2 986 405.34		R134	23 850.24 2 985 764.59
L135	24 166.93	2 986 325.76		R135	23 835.98 2 985 725.84
L136	24 162.78	2 986 311.82		R136	23 826.66 2 985 692.48
L137	24 153.64	2 986 302.56		R137	23 811.63 2 985 622.58
L138	24 125.57	2 986 251.13		R138	23 796.47 2 985 562.40
L139	24 094.16	2 986 183.65		R139	23 780.61 2 985 512.56
L140	24 093.28	2 986 168.41		R140	23 770.55 2 985 478.91
L141	24 042.72	2 986 048.08		R141	23 746.91 2 985 401.45
L142	24 016.82	2 985 994.49		R142	23 734.39 2 985 359.29
L143	23 987.95	2 985 941.11		R143	23 718.48 2 985 301.10
L144	23 957.01	2 985 889.70		R144	23 709.58 2 985 266.12
L145	23 912.54	2 985 819.48		R145	23 672.98 2 985 118.26
L146	23 894.37	2 985 788.03		R146	23 664.29 2 985 089.21
L147	23 877.92	2 985 753.02		R147	23 649.45 2 985 054.05
L148	23 869.93	2 985 734.12		R148	23 630.46 2 985 020.95
L149	23 851.33	2 985 675.21		R149	23 608.28 2 984 991.18
L150	23 839.05	2 985 615.72		R150	23 561.64 2 984 935.73
L151	23 825.57	2 985 562.34		R151	23 543.34 2 984 912.44
L152	23 809.41	2 985 504.17		R152	23 520.45 2 984 877.97
L153	23 799.23	2 985 470.10		R153	23 500.86 2 984 841.52

Vel	11	Van	15	P971/17
Sheet		of		

PADRESERWE KOÖRDINATE / ROAD RESERVE CO-ORDINATES						
LINKERKANT/LEFT HAND SIDE				REGTERKANT/RIGHT HAND SIDE		
	Y	X	WG 33°	Y	X	
L154	23 776.31	2 985 400.22		R154	23 484.00	2 984 801.41
L155	23 763.24	2 985 351.07		R155	23 450.22	2 984 708.54
L156	23 747.50	2 985 293.51		R156	23 429.69	2 984 653.32
L157	23 738.70	2 985 258.91		R157	23 408.06	2 984 597.59
L158	23 702.10	2 985 111.05		R158	23 396.52	2 984 568.78
L159	23 692.58	2 985 079.23		R159	23 370.37	2 984 504.22
L160	23 676.33	2 985 040.73		R160	23 347.71	2 984 449.87
L161	23 655.63	2 985 004.48		R161	23 323.60	2 984 395.27
L162	23 631.24	2 984 971.87		R162	23 310.39	2 984 366.59
L163	23 584.60	2 984 916.42		R163	23 280.79	2 984 303.26
L164	23 567.53	2 984 894.70		R164	23 251.49	2 984 228.61
L165	23 546.19	2 984 862.55		R165	23 232.67	2 984 155.33
L166	23 527.92	2 984 828.56		R166	23 217.58	2 984 077.54
L167	23 512.19	2 984 791.16		R167	23 207.31	2 984 032.90
L168	23 478.41	2 984 698.28		R168	23 189.72	2 983 976.94
L169	23 457.74	2 984 642.67		R169	23 173.43	2 983 936.36
L170	23 435.95	2 984 586.53		R170	23 108.48	2 983 788.74
L171	23 424.33	2 984 557.52		R171	23 095.60	2 983 756.01
L172	23 398.18	2 984 492.95		R172	23 083.80	2 983 716.35
L173	23 375.27	2 984 438.04		R173	23 075.75	2 983 675.76
L174	23 350.91	2 984 382.86		R174	23 071.73	2 983 638.38
L175	23 337.57	2 984 353.89		R175	23 063.79	2 983 516.33
L176	23 307.97	2 984 290.56		R176	23 060.18	2 983 475.86
L177	23 280.05	2 984 219.43		R177	23 051.49	2 983 417.56
L178	23 262.12	2 984 149.61		R178	23 041.38	2 983 370.42
L179	23 247.03	2 984 071.82		R179	23 024.53	2 983 301.52
L180	23 236.30	2 984 025.17		R180	23 009.16	2 983 221.53
L181	23 217.91	2 983 966.69		R181	23 002.23	2 983 148.80
L182	23 200.89	2 983 924.28		R182	22 993.07	2 982 966.30
L183	23 135.94	2 983 776.65		R183	22 988.72	2 982 922.45
L184	23 123.92	2 983 746.13		R184	22 976.57	2 982 865.69
L185	23 112.93	2 983 709.14		R185	22 962.91	2 982 824.75
L186	23 105.41	2 983 671.30		R186	22 893.43	2 982 645.39
L187	23 101.67	2 983 636.44		R187	22 858.47	2 982 575.98
L188	23 094.54	2 983 526.69		R188	22 845.67	2 982 501.35
L189	23 089.98	2 983 472.48		R189	22 811.07	2 982 376.65
L190	23 080.99	2 983 412.11		R190	22 804.13	2 982 356.16
L191	23 070.52	2 983 363.30		R191	22 796.41	2 982 339.28
L192	23 053.67	2 983 294.40		R192	22 787.10	2 982 323.21
L193	23 038.87	2 983 217.35		R193	22 776.31	2 982 308.10
L194	23 032.20	2 983 147.30		R194	22 764.14	2 982 294.08
L195	23 021.40	2 982 964.25		R195	22 750.69	2 982 281.28
L196	23 018.40	2 982 918.05		R196	22 736.09	2 982 269.82
L197	23 005.45	2 982 857.55		R197	22 720.46	2 982 259.80
L198	22 990.88	2 982 813.91		R198	22 703.95	2 982 251.32
L199	22 921.40	2 982 634.55		R199	22 685.51	2 982 244.03
L200	22 896.93	2 982 566.50		R200	22 171.27	2 982 070.47
L201	22 874.58	2 982 493.32		R201	22 136.47	2 982 056.71
L202	22 839.97	2 982 368.63		R202	22 100.97	2 982 035.89
L203	22 831.97	2 982 344.98		R203	22 065.17	2 982 013.74
L204	22 823.05	2 982 325.50		R204	22 033.95	2 981 986.68

Vel	12	Van	15	P971/17
Sheet		of		

PADRESERWE KOÖRDINATE / ROAD RESERVE CO-ORDINATES					
LINKERKANT/LEFT HAND SIDE			REGTERKANT/RIGHT HAND SIDE		
	Y	X	WG 33°	Y	X
L205	22 812.32	2 982 306.95		R205	22 005.46 2 981 955.73
L206	22 799.88	2 982 289.53		R206	21 980.95 2 981 922.01
L207	22 785.83	2 982 273.35		R207	21 960.44 2 981 885.71
L208	22 770.31	2 982 258.59		R208	21 944.21 2 981 847.30
L209	22 753.46	2 982 245.37		R209	21 933.27 2 981 810.66
L210	22 735.43	2 982 233.81		R210	21 788.54 2 981 213.91
L211	22 716.38	2 982 224.01		R211	21 775.15 2 981 167.94
L212	22 695.11	2 982 215.61		R212	21 753.26 2 981 113.90
L213	22 181.29	2 982 040.98		R213	21 732.49 2 981 074.28
L214	22 148.92	2 982 029.41		R214	21 687.55 2 980 996.77
L215	22 115.08	2 982 011.57		R215	21 666.93 2 980 955.37
L216	22 083.48	2 981 989.98		R216	21 652.97 2 980 916.10
L217	22 054.56	2 981 964.93		R217	21 643.57 2 980 875.47
L218	22 028.68	2 981 936.74		R218	21 638.87 2 980 834.04
L219	22 006.18	2 981 905.79		R219	21 639.71 2 980 781.69
L220	21 987.37	2 981 872.47		R220	21 664.66 2 980 498.02
L221	21 972.47	2 981 837.22		R221	21 671.03 2 980 433.05
L222	21 962.42	2 981 803.59		R222	21 681.39 2 980 347.80
L223	21 817.70	2 981 206.84		R223	21 728.27 2 980 000.50
L224	21 803.54	2 981 158.24		R224	21 735.41 2 979 937.48
L225	21 780.40	2 981 101.11		R225	21 739.65 2 979 878.24
L226	21 758.44	2 981 059.23		R226	21 741.52 2 979 818.87
L227	21 713.50	2 980 981.73		R227	21 741.01 2 979 759.48
L228	21 694.58	2 980 943.73		R228	21 739.77 2 979 727.68
L229	21 681.75	2 980 907.67		R229	21 712.18 2 979 176.07
L230	21 673.14	2 980 870.39		R230	21 708.87 2 979 100.40
L231	21 668.83	2 980 832.37		R231	21 706.54 2 979 025.77
L232	21 669.59	2 980 784.32		R232	21 702.05 2 978 846.52
L233	21 694.54	2 980 500.64		R233	21 702.64 2 978 779.31
L234	21 700.85	2 980 436.28		R234	21 707.09 2 978 718.55
L235	21 711.12	2 980 351.82		R235	21 712.26 2 978 677.32
L236	21 758.00	2 980 004.52		R236	21 730.95 2 978 549.85
L237	21 765.28	2 979 940.23		R237	21 736.32 2 978 501.00
L238	21 769.51	2 979 879.78		R238	21 738.13 2 978 442.33
L239	21 771.52	2 979 819.22		R239	21 736.26 2 978 399.26
L240	21 771.00	2 979 758.62		R240	21 726.36 2 978 267.15
L241	21 769.73	2 979 726.18		R241	21 719.71 2 978 205.01
L242	21 742.14	2 979 174.57		R242	21 709.81 2 978 146.75
L243	21 738.85	2 979 099.28		R243	21 696.42 2 978 089.19
L244	21 736.53	2 979 025.02		R244	21 685.61 2 978 051.31
L245	21 732.04	2 978 845.77		R245	21 652.65 2 977 944.17
L246	21 732.51	2 978 780.58		R246	21 640.16 2 977 896.65
L247	21 736.93	2 978 721.67		R247	21 630.12 2 977 835.95
L248	21 741.94	2 978 681.67		R248	21 626.79 2 977 791.59
L249	21 760.63	2 978 554.20		R249	21 615.09 2 977 479.73
L250	21 766.24	2 978 503.21		R250	21 611.23 2 977 436.95
L251	21 768.13	2 978 441.97		R251	21 603.97 2 977 399.07
L252	21 766.18	2 978 397.01		R252	21 593.18 2 977 362.03
L253	21 756.27	2 978 264.91		R253	21 578.96 2 977 326.18
L254	21 749.42	2 978 200.87		R254	21 559.07 2 977 287.74
L255	21 739.22	2 978 140.84		R255	21 258.48 2 976 775.02

Vel Sheet	13	Van of	15	P971/17
--------------	----	-----------	----	---------

PADRESERWE KOÖRDINATE / ROAD RESERVE CO-ORDINATES					
LINKERKANT/LEFT HAND SIDE			REGTERKANT/RIGHT HAND SIDE		
	Y	X	WG 33°	Y	X
L256	21 725.44	2 978 081.53		R256	21 218.89 2 976 703.82
L257	21 714.27	2 978 042.49		R257	21 187.58 2 976 641.41
L258	21 681.33	2 977 935.35		R258	21 130.27 2 976 521.40
L259	21 669.47	2 977 890.23		R259	21 096.31 2 976 451.70
L260	21 659.93	2 977 832.59		R260	21 063.62 2 976 387.04
L261	21 656.77	2 977 790.46		R261	20 944.36 2 976 155.48
L262	21 645.06	2 977 478.61		R262	20 921.22 2 976 117.10
L263	21 640.93	2 977 432.70		R263	20 897.55 2 976 087.02
L264	21 633.13	2 977 392.04		R264	20 870.62 2 976 059.86
L265	21 621.56	2 977 352.30		R265	20 840.76 2 976 035.93
L266	21 606.29	2 977 313.82		R266	20 816.61 2 976 020.42
L267	21 584.95	2 977 272.57		R267	20 790.88 2 976 006.57
L268	21 284.36	2 976 759.84		R268	20 186.17 2 975 717.82
L269	21 245.44	2 976 689.84		R269	20 141.98 2 975 699.05
L270	21 214.65	2 976 628.48		R270	20 086.30 2 975 681.60
L271	21 157.34	2 976 508.47		R271	20 046.72 2 975 673.04
L272	21 123.19	2 976 438.35		R272	20 013.81 2 975 667.20
L273	21 090.28	2 976 373.30		R273	19 949.07 2 975 652.32
L274	20 971.03	2 976 141.75		R274	19 890.86 2 975 632.90
L275	20 945.81	2 976 099.92		R275	19 834.69 2 975 608.20
L276	20 920.03	2 976 067.16		R276	19 781.03 2 975 578.42
L277	20 890.69	2 976 037.55		R277	19 744.31 2 975 554.05
L278	20 858.15	2 976 011.48		R278	19 629.81 2 975 472.47
L279	20 831.84	2 975 994.59		R279	19 583.75 2 975 441.57
L280	20 803.81	2 975 979.50		R280	19 532.85 2 975 411.56
L281	20 199.10	2 975 690.75		R281	19 480.24 2 975 384.65
L282	20 152.48	2 975 670.96		R282	19 444.31 2 975 368.49
L283	20 093.72	2 975 652.54		R283	19 403.09 2 975 352.01
L284	20 051.96	2 975 643.50		R284	19 027.07 2 975 211.49
L285	20 019.06	2 975 637.66		R285	18 976.55 2 975 189.18
L286	19 957.24	2 975 623.46		R286	18 923.43 2 975 157.39
L287	19 901.66	2 975 604.91		R287	18 890.03 2 975 132.08
L288	19 848.02	2 975 581.32		R288	18 783.91 2 975 044.01
L289	19 796.79	2 975 552.89		R289	18 752.32 2 975 014.46
L290	19 761.72	2 975 529.62		R290	18 725.38 2 974 982.64
L291	19 647.22	2 975 448.04		R291	18 702.26 2 974 947.95
L292	19 599.75	2 975 416.20		R292	18 683.23 2 974 910.85
L293	19 547.30	2 975 385.27		R293	18 668.56 2 974 871.83
L294	19 493.09	2 975 357.54		R294	18 658.44 2 974 831.38
L295	19 456.07	2 975 340.89		R295	18 653.00 2 974 790.05
L296	19 413.59	2 975 323.91		R296	18 653.12 2 974 734.48
L297	19 037.58	2 975 183.39		R297	18 684.14 2 974 340.53
L298	18 990.25	2 975 162.49		R298	18 685.78 2 974 290.46
L299	18 940.47	2 975 132.70		R299	18 681.87 2 974 232.23
L300	18 909.19	2 975 108.99		R300	18 675.69 2 974 193.13
L301	18 803.07	2 975 020.93		R301	18 629.16 2 973 955.21
L302	18 774.07	2 974 993.81		R302	18 620.57 2 973 920.98
L303	18 749.35	2 974 964.60		R303	18 607.24 2 973 885.11
L304	18 728.12	2 974 932.76		R304	18 589.91 2 973 850.99
L305	18 710.67	2 974 898.71		R305	18 568.80 2 973 819.07
L306	18 697.20	2 974 862.89		R306	18 544.20 2 973 789.77

Vel	14	Van	15	P971/17
Sheet		of		

PADRESERWE KOÖRDINATE / ROAD RESERVE CO-ORDINATES					
LINKERKANT/LEFT HAND SIDE			REGTERKANT/RIGHT HAND SIDE		
	Y	X	WG 33°	Y	X
L307	18 687.91	2 974 825.77		R307	18 516.41 2 973 763.47
L308	18 682.92	2 974 787.84		R308	18 485.80 2 973 740.50
L309	18 683.03	2 974 736.83		R309	18 452.78 2 973 721.18
L310	18 714.05	2 974 342.89		R310	18 428.54 2 973 709.99
L311	18 715.78	2 974 290.06		R311	18 039.04 2 973 548.73
L312	18 711.66	2 974 228.62		R312	17 955.26 2 973 516.24
L313	18 705.13	2 974 187.37		R313	17 862.59 2 973 480.03
L314	18 658.60	2 973 949.45		R314	17 765.55 2 973 458.13
L315	18 649.24	2 973 912.15		R315	17 703.13 2 973 443.44
L316	18 634.72	2 973 873.07		R316	17 280.38 2 973 351.15
L317	18 615.84	2 973 835.90		R317	17 237.58 2 973 339.03
L318	18 592.85	2 973 801.12		R318	17 199.08 2 973 323.02
L319	18 566.02	2 973 769.20		R319	17 165.66 2 973 302.73
L320	18 535.75	2 973 740.54		R320	17 128.80 2 973 278.41
L321	18 502.40	2 973 715.52		R321	17 097.92 2 973 250.40
L322	18 465.63	2 973 696.06		R322	17 070.44 2 973 219.04
L323	18 438.63	2 973 685.71		R323	17 046.72 2 973 184.76
L324	18 049.63	2 973 523.10		R324	17 027.06 2 973 147.99
L325	17 965.47	2 973 488.03		R325	17 011.72 2 973 109.23
L326	17 869.92	2 973 456.13		R326	17 003.32 2 973 079.11
L327	17 772.89	2 973 429.04		R327	16 996.95 2 973 046.48
L328	17 709.53	2 973 414.13		R328	16 940.39 2 972 653.06
L329	17 286.78	2 973 321.84		R329	16 914.81 2 972 657.50
L330	17 247.50	2 973 310.71		R330	16 914.50 2 972 599.64
L331	17 212.17	2 973 296.02		R331	16 932.74 2 972 599.87
L332	17 178.74	2 973 277.40		R332	16 924.96 2 972 545.75
L333	17 147.65	2 973 255.08			
L334	17 119.32	2 973 229.37			
L335	17 094.10	2 973 200.59			
L336	17 072.32	2 973 169.13			
L337	17 054.28	2 973 135.38			
L338	17 040.20	2 973 099.80			
L339	17 032.49	2 973 072.16			
L340	17 026.65	2 973 042.21			
L341	16 969.98	2 972 648.05			
L342	16 980.09	2 972 646.44			
L343	16 980.04	2 972 600.84			
L344	16 963.14	2 972 600.44			
L345	16 955.19	2 972 545.16			

Vel	15	Van	15	P971/17
Sheet		of		

DEPARTMENT OF TRANSPORT

NO. 365

27 MARCH 2018

**THE SOUTH AFRICAN NATIONAL ROADS
AGENCY SOC LIMITED**

Registration No: 1998/009584/30

DECLARATION AMENDMENT OF NATIONAL ROAD N2 SECTION 10

AMENDMENT OF DECLARATION No.'s 236 OF 1972, 247 OF 1981, 150 OF 1981 AND 2031 OF 1990.

By virtue of section 40(1)(b) of The South African National Roads Agency Limited and National Roads Act 1998 (Act No. 7 of 1998), I hereby amend (I) Declaration No. 236 of 1972, a part of the Schedule, being the descriptive declaration of the route from Vergaderingskraal up to Diep River Mond and from Nocton up to Witteklip, (II) Declaration No. 247 of 1981 in its entirety, (III) Declaration No. 150 of 1981 in its entirety, (IV) Declaration No. 2031 of 1990 in its entirety, by substituting it all with the accompanying sheets 1 to 31 of Plan No. P978/17.

(National Road N2 Section 10: Vergaderingskraal – Witteklip)

MINISTER OF TRANSPORT