

# ACTOM

## JOHN THOMPSON OVERVIEW

30 September 2021



A division of ACTOM (Pty) Ltd

ACTOM (Pty) Ltd is a level 1 B-BBEE Contributor with 52.91% Black Ownership and 31.97% Black Women Ownership. It is the largest manufacturer, solution provider, repairer, maintainer and distributor of electro-mechanical equipment in Africa, offering a winning and balanced combination of manufacturing, service, repairs, maintenance, projects and distribution through its 33 outlets throughout Sub-Saharan Africa.

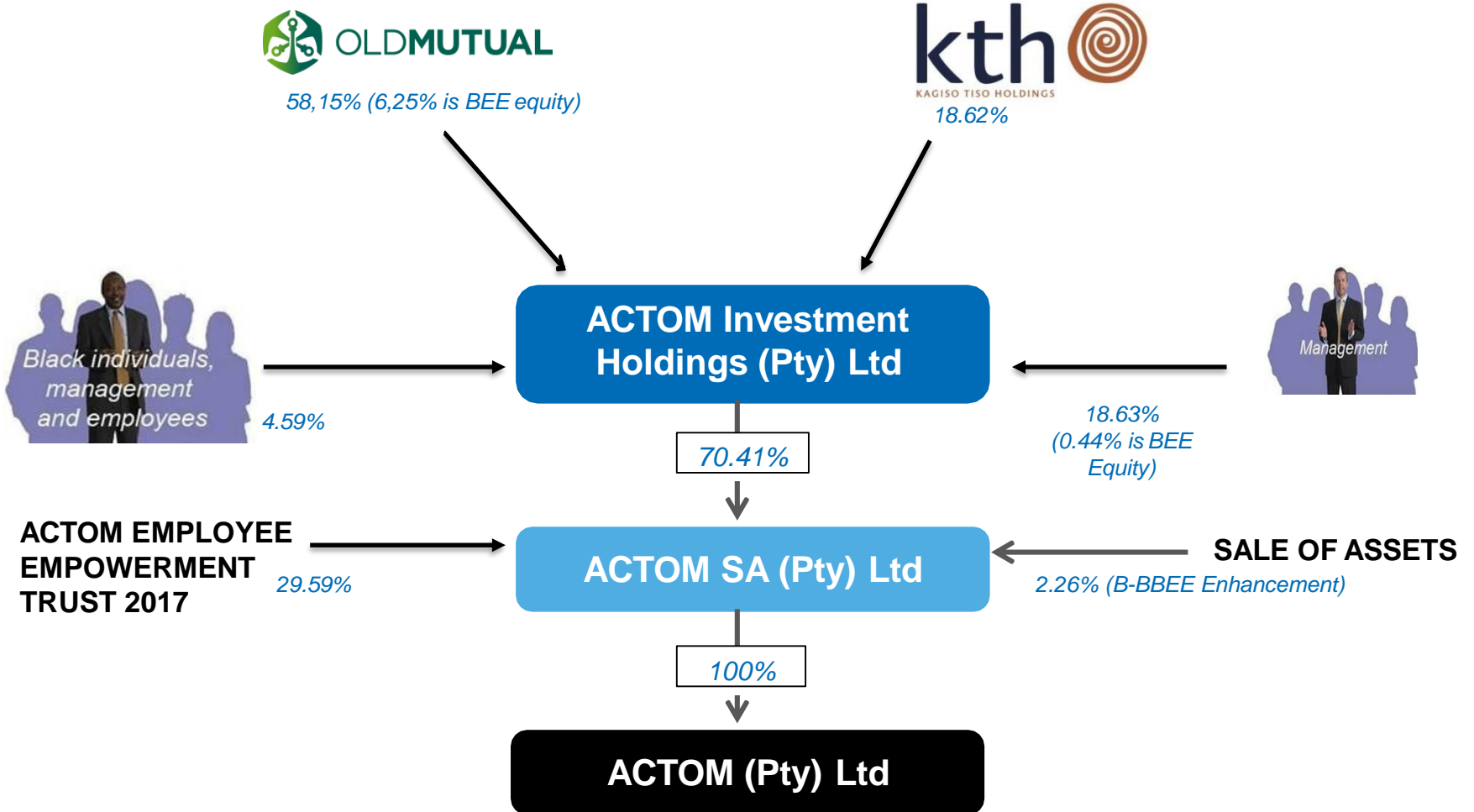
ACTOM is also a major local supplier of electrical equipment, services and balance of plant to the renewable energy projects.

It also holds numerous technology, distribution and value added reseller agreements with various partners, both locally and internationally.

ACTOM

ACTOM

# ACTOM's Shareholding Structure



# ACTOM (PTY) LTD DIVISIONS AND BUSINESS UNITS

Power	Engineering Projects & Contracts	High Voltage Equipment	Medium Voltage Switchgear	Power Transformers	Distribution Transformers	LH Marthinusen
John Thompson Utility Boilers & Environmental	Industry	Circuit Breakers	MV Switchgear	Power Transformers	Distribution Transformers	Transformers
John Thompson Industrial Watertube Boilers	Contracting	Disconnectors	WPI Power Solutions			Motors
John Thompson Package Boilers	Power Systems	Instrument Transformers	Current Electric			Fluidex
John Thompson Manufacturing	Signalling and Transport Equipment and Projects	Surge Arresters & Insulators				Fan Service
John Thompson Air Quality Solutions	ACTOM Energy	Isolated Phase Busbars & Insulated Busbars				
	LHM Coastal	HV Hybrid Switchgear upto 132kV				
		HV service and spare parts				

Reid & Mitchell	Marthinusen & Coutts	ACTOM Turbo Machines	Metalplus	Electrical Equipment	ACTOM Smart Technologies
Reid & Mitchell	Rotating Machines	ACTOM Turbo Machines	Metalplus	Electrical Products	Protection & Control
ACTOM Electrical Machines	Engineering Services			Genlux Lighting	Static Power
ACTOM Energy Namibia				Satchwell	Alkaline Batteries
Electrical Products Namibia					COM10
Namibian Armature Rewinders					

Key:

Divisions

Business Units

# Multi-Branded



# MISSION STATEMENT

To be a global leader  
in energy and  
environmental solutions  
through value engineering  
and innovation

# OUR VALUES

 **Customer Driven Excellence**  
The customer is the ultimate judge of our performance.

 **Innovation**  
We have passion for sustainable solutions.

 **Leadership**  
Our values-based leadership inspires us to transform and excel.

 **Accountability**  
We own our actions and consequences.

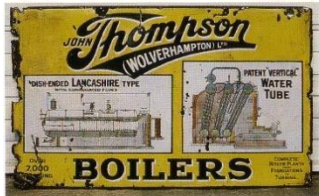


**Dignity**   
Our respectful behaviour creates the human dignity we are all entitled to.

**Integrity**   
We do the right thing even when no-one is watching. We align our actions with our words and deliver what we promise. We build and strengthen our reputation through trust.

**Forward together.**

# A Proud and Distinguished History



- 1824 William Thompson established an iron boat building business in Bilston, UK
- 1870 Works moved to Wolverhampton to concentrate on production of steam boilers
- 1935 Agent appointed in South Africa
- 1954 John Thompson – Albert de Jong (Pty) Ltd manufacture their first boiler in South Africa
- 1960 John Thompson Africa (Pty) Ltd established under control of UK parent company
- 1969 John Thompson UK acquired Cochran to become Europe's leading manufacturer of shell boilers
- 1977 Clarke Chapman Ltd & Reyrolle Parsons Ltd formed Northern Engineering Industries Ltd (NEI)
- 1989 NEI merged with Rolls-Royce creating Rolls-Royce Industrial Power Group which included International Combustion Ltd, Cochran and John Thompson Africa
- 2001 ALSTOM Power purchased the assets of NEI Africa including John Thompson Africa and ICAL and created the business division – John Thompson Boilers
- 2004 ALSTOM South Africa acquired 90% of its shares from Alstom Plc and became a South African owned company with a 50% BEE ownership
- 2009 ALSTOM Electrical Industries (Pty) Ltd rebranded to become ACTOM (Pty) Ltd of which John Thompson is a division
- 2010 John Thompson celebrates 75 years in South Africa
- 2014 John Thompson's manufacturing facility in Bellville celebrates its 60th year



Rolls-Royce

ALSTOM

ACTOM



# Technology History

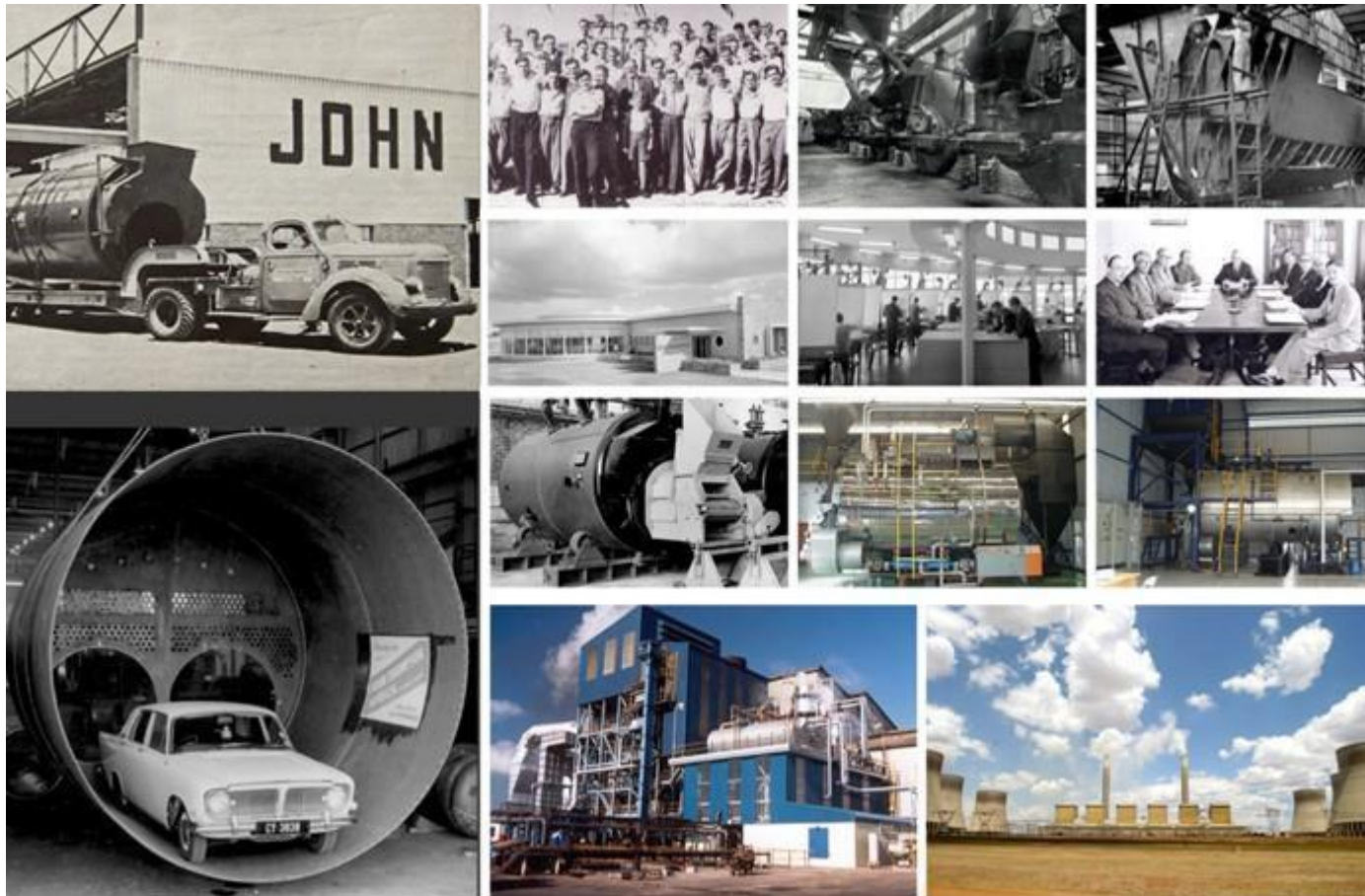


Lancashire Boilers  
Albert de Jong  
Thompson Wolverhampton  
John Thompson Ltd  
CE Raymond  
Precision Engineering  
Combustion Engineering  
ICAL  
Cochran  
Echorkessel  
World Bank-  
Technology transfer to China  
Rolls-Royce  
ALSTOM

Technology  
People  
Customers



# More Than 75 Years of John Thompson in South Africa



ACTOM

# Regional Presence, Outsourcing and OM Sites



## North West Hospitals

- Klerksdorp Hospital
- Tshepong Hospital
- Mahikeng Hospital
- Zeerust Hospital
- Schweizer Reneke Hospital
- Gelukspan Hospital

## West Point Processors

## Western Cape Hospitals

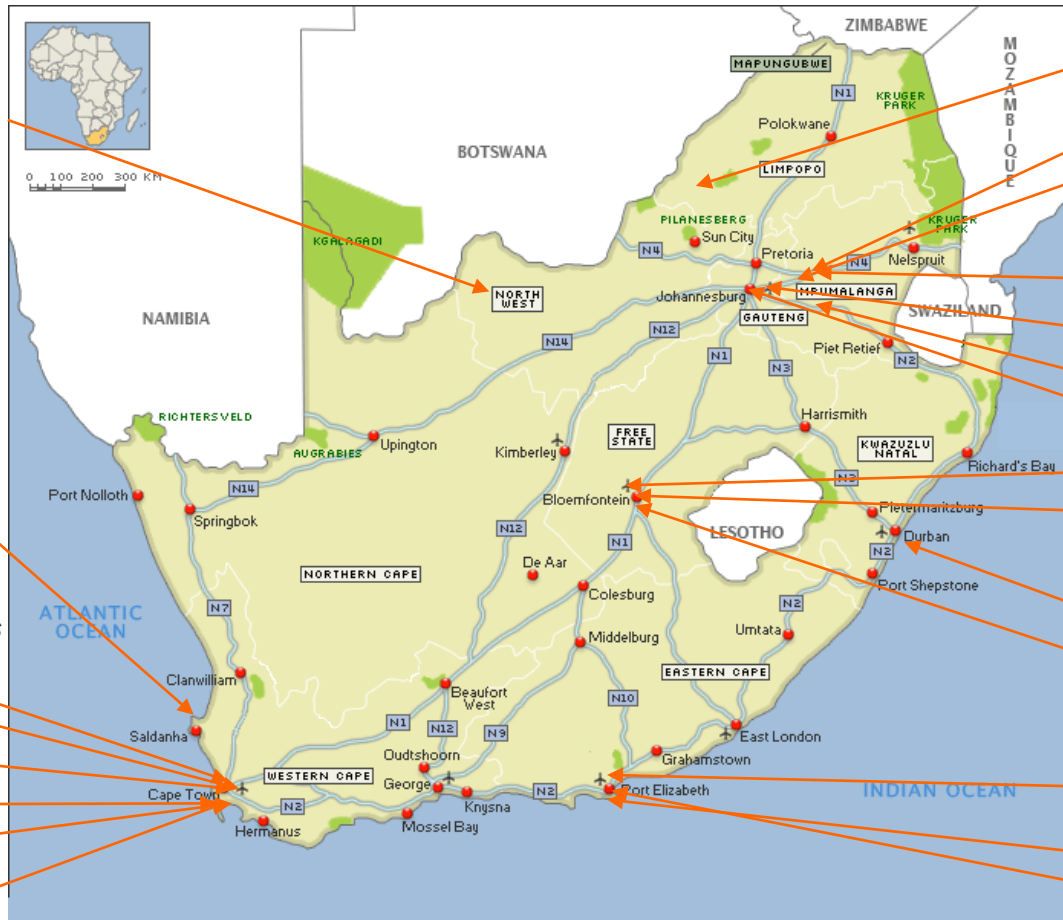
- Tygerberg Hospital
- Lentegeur Hospital

## Western Cape College

## Colibri Towels

## Oude Molen

## JT Cape Town Branch



Matimba Boilerserve

Mpumalanga Hospitals x 8

JT Witbank Branch

Komati Boilerserve

Tutuka Boilerserve

Camden Power Station

JT Isando Branch

JT Bloemfontein Branch

Bloemfontein Hospitals

- Universitas Hospital
- Bloemfontein National Hospital
- (Plus various hospitals as required)

JT Durban Branch

Bloemfontein Laundries

- Kroonstad Laundry
- Bloemfontein National Laundry
- Hoopstad Laundry

Sovereign Foods

Famous Brands

JT Port Elizabeth Branch



# John Thompson Management Structure



Over 200 Years Experience



**Divisional Chairman**  
*Andy Abbey*



Actom Executive  
Director  
*Shirley Chauke*



Finance &  
Administration  
*Jaco Grobbelaar*



Technical  
*Etienne  
de Villiers*



Business  
Development  
*Shad Seeth*



SHEQ  
*Janene Jansen*



**Divisional CEO**  
*John-Paul Andre*



Human  
Resources  
*Alley Verhufen*



Package  
Boilers  
*Martin Reck*



Industrial  
Watertube  
*Russell Warren*



Utility Boiler &  
Environmental  
*Gladstone Mbili*



Manufacturing  
*Suben  
Govender*



AQS  
APC & HVAC  
*Tobie Jansen*

# Training Programmes

## Apprentice training school :

- Boilermakers
- Fitters
- Welders

## Boiler development and training centre :

- Boiler operating (coal firing)
- Boiler operating (oil and gas firing)
- Boiler maintenance
- Stoker maintenance
- Boiler supervision and management
- Boiler inspection

## On-site training :

- Boiler operating



# Social Responsibility Initiatives

---

## 1. Osithandweni Stimulation Centre, Nthoroane, Greylingstad

- Burglar bars and gates
- Palisade fencing
- Paving

## 2. Tshepeha Secondary School, Grootvlei

- Refurbish all buildings
- Pave parking and assembly areas

## 3. Tegwan's Nest Combined School, Nthoroane, Greylingstad

- Rebuild school hall and kitchen
- Repair roof
- Replace pit toilets with septic tank system

## 4. Nthoroane Library, Greylingstad

- Supply and install new containerized library for community

## 5. Leseli Combined School, Sakhile, Standerton

- Supply and install palisade fencing
- Refurbish ablution block

## 6. Letupu High School, Lephalale

- Supply and install prefabricated offices and boardroom

## Supplier and Enterprise Development Initiatives

---

1. Siyavuka Plant Hire, Balfour
2. Divinity Trading and Logistics, Balfour
3. Bosveld Guest House, Lephalale
4. Phooko & Sons, Lephalale
5. Lebudi Kgatelopele, Lephalale
6. Asakhendoda (Pty) Ltd, Standerton
7. Dubandlela, Standerton

# Bellville Capabilities and Capacities

Cranes:

- *Lifting capacity up to 100 ton*

CNC plasma and oxy-acetylene profile cutting and flame bevelling:

- *Largest plate size 4 m x 14 m*

Guillotine:

- *Up to 3 m wide by 12 mm thick*

Plate rolling:

- *Up to 3,2 m wide and 70 mm cold*

Press brake:

- *Up to 400 ton, knife length 3 730 mm*

Hydraulic press:

- *Up to 500 ton*

Submerged arc welding machines:

- *Max. boom travel vertically 6 100 mm /*
- *Max boom travel horizontally 6100 mm*

Thermal stress relieving:

- *Size 21000 x 5 150 x 5 855 mm; Capacity 100 ton*

Radial and traveling bed drilling machines:

- *Max. distance outside column to spindle center 2 515 mm*
- *Max. height under spindle 2 200 mm*
- *Max. drill size 100mm, travel 11000 mm*

CNC pipe bending machine

- *Up to 115 mm diameter – cold bending*
- *Above 115mm – hot bending*

Automatic panel/membrane wall welding machines

Panel bending machine

Automatic economiser tube fin welding machines



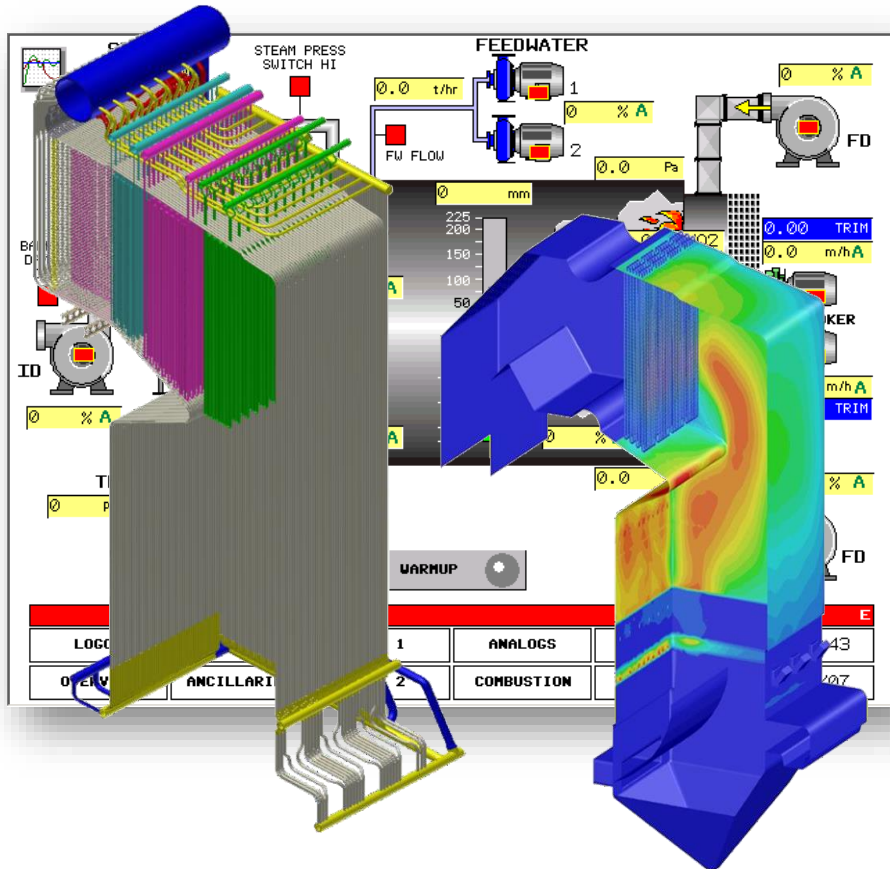


# John Thompson Foundry



- All cast iron at the John Thompson foundry is produced under the Meehanite process
- It is South Africa's only foundry dedicated to boiler castings
- The Meehanite process covers the production of more than 40 grades of cast iron
- The Meehanite licence is restricted to 200 of the world's leading foundries
- The Meehanite process involves detailed specifications, records and controls at each step of production to ensure the consistent guaranteed high-grade quality of castings demanded by the international licensor.





## Mechanical Design & Weld Engineering

Conceptual and detail Designs  
3-D modeling, CFD and thermal modelling  
Product development  
Operational and maintenance technical support Weld development and qualifications

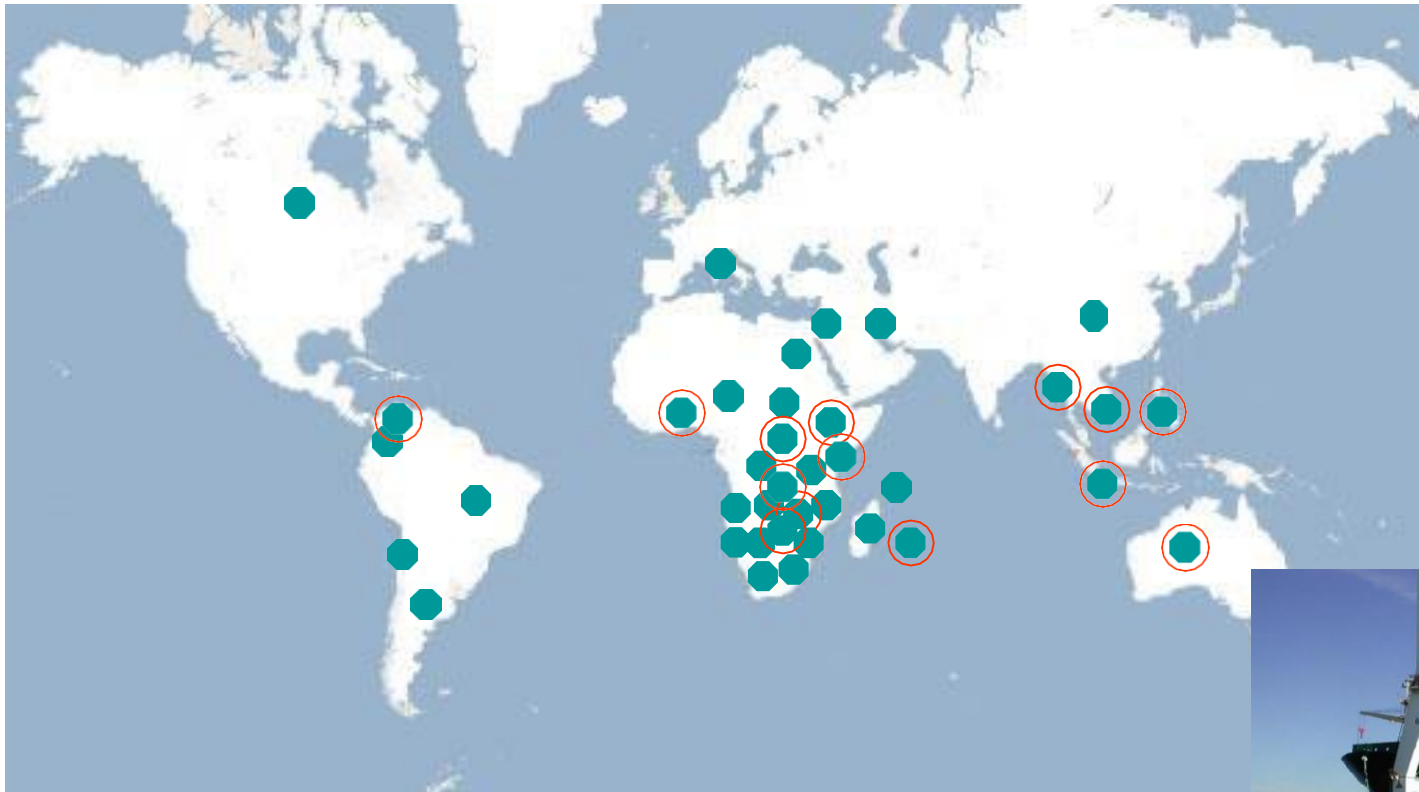
## Instrumentation & Controls



Control philosophies for full automation P & I diagrams and SCADA development  
Measurement and remote monitoring Data analytics and AI / neural networks

## Metallurgical Inspections

Metallographic examination  
Non-destructive testing and replication  
Boiler statutory inspections  
Metallurgical inspection remnant life analysis  
Failure analysis

# Worldwide Markets and Agents



-  John Thompson boilers installed
-  John Thompson representation / agents



# Quality and Certification



- ISO 3834 : IIW Manufacturer Certification Scheme
- ISO 9001 : 2015
- ISO 14001: 2015
- ISO 45001: 2018
- Nuclear Supplier Level 1 RD0034
- Lloyd's certificate of manufacture
- BBBEE – Level 1 contractor
- CIDB 9ME Qualification
- 3 Flames Member of SAGA
- Eskom
- Sasol



## CERTIFICATE

This is to certify that  
**John Thompson A Division of Actom (Pty) Ltd**  
 Sacks Circle  
 Bellville South  
 Cape Town  
 7535  
 Western Cape  
 South Africa

with the organizational units/units as listed in the annex  
 has implemented and maintains a Quality Management System.

## ISO 9001 : 2015

Certificate registration no. 4802438 DM15  
 Valid from 2015-01-26  
 Valid until 2021-01-25  
 Date of certification: 2015-01-26

## DQS GmbH

*Steph He. 6h*  
 Stefan Heide  
 Managing Director

Approved Body: DQS GmbH, Augustinergasse 21, 69469 Heidelberg am Neckar, Germany  
 Administrative Office: 1425 South Africa, P.O. Box 617, Sandton 2146 - South Africa



# Solutions Driven



Engineering solutions



Environmental solutions



**Solutions!**



Project solutions



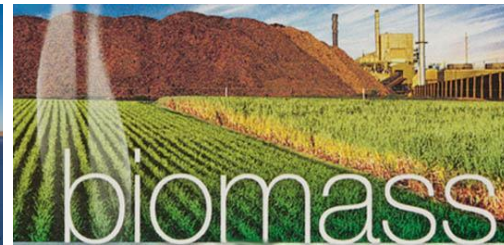
Logistics solutions



Financial solutions



Biomass combustion  
Co-generation  
Waste-heat boilers  
Environmental solutions  
Solar energy



# Customer Base (not a complete list)



# Exports





# South East Asia Business



Boilers Installed:

Over 650



# South East Asia Customers



The map shows South East Asia with various customer logos overlaid. The logos include:

- STROOLES & SIGARETTEN FABRIK NOJORDRO**
- SEI PT. SHOWA ESTERINDO INDONESIA**
- SAEHAN DANLIRIS INDUSTRIAL & TRADING COMPANY LTD**
- POKPHAND CHAROEN POKPHAND INDONESIA**
- Indofood THE SYMBOL OF QUALITY FOODS**
- CHUNGHO SEAFOOD**
- wilmar**
- tps food**
- PRIMATEXCO**
- PT. MOLINDO RAYA INDUSTRIAL**
- THAIKK**
- PT. Cisadane Raya Chemicals Oleochemical Industry**
- PT. PALUR RAYA**
- pt. Sorini corporation Tbk**
- ABC**
- deltomed**
- BKP PT. BINA KARYA PRIMA OIL, SOAP & FAT INDUSTRIES**
- PT. MUSIM MAS**
- CORBOX**
- PT. SINTA PRIMA FEEDMILL**
- PT. INDO ACIDATAMA CHEMICAL INDUSTRY**
- PAPERTECH INDONESIA**
- PT. unilon TEXTILE INDUSTRIES SPINNING • WEAVING • PROCESSING**
- TPS food PT. TIGA PILAR SEJAHTERA FOOD Tbk**
- WINGS**
- NOREE SINCE 1972**
- EA EUROASITIC**
- PISMATEX TEXTILE INDUSTRY**
- Ecogreen Oleochemicals**
- BOSTER**
- PT. KARYA PRAJONA NELAYAN**
- PT SAYAP MAS UTAMA**
- eratem Excellence in Apparel**
- PT. KOLON INA**

# John Thompson Today



R 1 600 000 k  
Annual turnover

1 600  
Employees



ACTOM

# John Thompson Business Units



## Utility Boilers & Environmental

## Industrial Watertube Boilers

## Package Boilers

## Manufacturing

## Air Quality Solutions



- Boiler maintenance and retrofits
- Electrostatic precipitators
- Fabric filter plant
- Welding procedure development
- High pressure piping
- Nuclear piping
- Construction services
- Cooling towers
- Flue gas desulphurisation
- Laser cutting and steel fabrication

- Coal-, biomass-, oil- & gas-fired watertube boilers
- Waste-heat boilers
- Boiler components
- Construction services
- Engineering services
- Refurbishment & retrofitting
- After-sales service & spares

- Coal-, biomass-, oil- & gas-fired firetube boilers
- Waste-heat boilers
- Chaingrate stokers
- Energy management
- Engineering services
- Construction services
- Boiler development & training centre
- After-sales service & spares

- Pressure vessels
- Steam generators
- Pressurised system
- Heavy fabrications
- Piping, plate & structural
- Meehanite foundry
- Quality assurance & control
- Inspection services
- Non-destructive testing
- Post weld heat treatment
- Pressure testing
- Qualification of welding procedures and welders

- Air Pollution Control (APC)
- Dust control, Gas cleaning, Turnkey systems, Bag filters, Wet scrubbers, Cyclones, Grit collectors, ESPs
  - Design engineering, After sales & spares, Maintenance, Refurbishment & repairs
- Heating, Ventilation and Air Conditioning (HVAC)
- Design, Fabrication, Installation & Commissioning
  - After-Sales Service & Maintenance

# Utility Boilers & Environmental Solutions

# Utility Boilers & Environmental Solutions



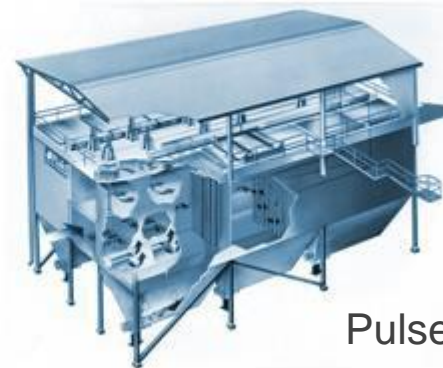
Electrostatic precipitators



De-sulphurisation (NID)



Utility boilers  
maintenance,  
service & repairs



Pulse jet fabric filters



Kendal

Arnot

Matimba

Koeberg

Boilers  
Pressure parts  
Gas cleaning  
Maintenance  
Repairs  
Pipe work

# Utility Boilers

---



Arnot Power Station

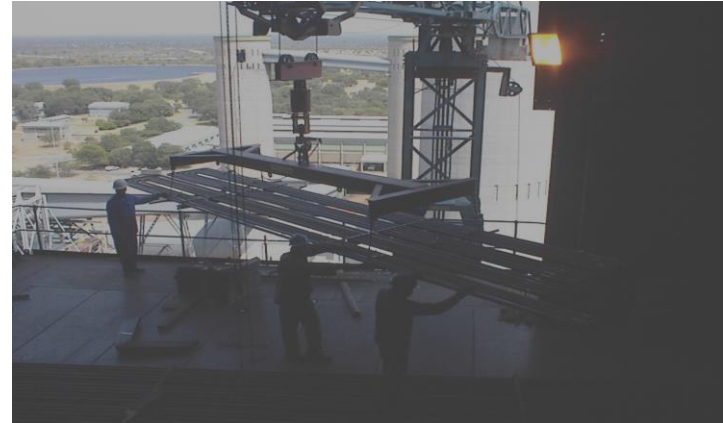


# Utility Boilers



## Matimba Power Station

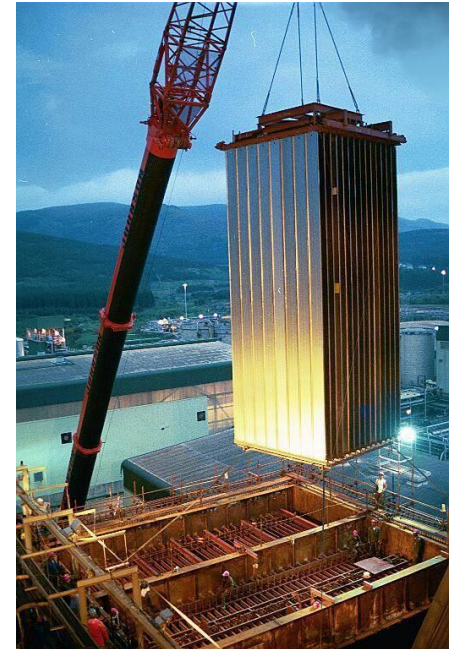
Boiler repairs and  
boilerserve contract



# Electrostatic Precipitators

## SAPPI Ngodwana

Replacement of two ESP's existing internals with ALSTOM new designed internals, consisting of three electrical fields each



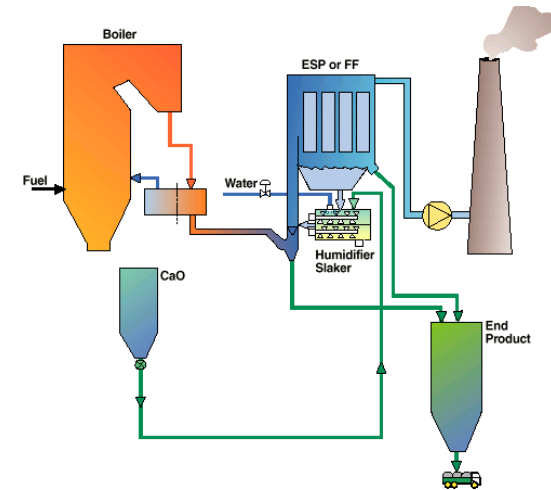
# Coal Stack Emission Abatement System



## MONDI Merebank

De-sulphurisation of the existing coal fired boiler plant using our NID technology with fabric filters as integrated collector

The NID process with bag filters



# Bag Filters

## Fabric filter retrofit units 1 to 3 Arnot

Retrofitting of the existing ESP's into fabric filter plants.

*Before*  
→



*After*  
→



# Industrial Watertube Boilers

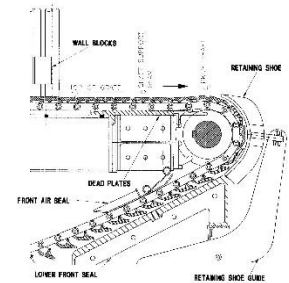
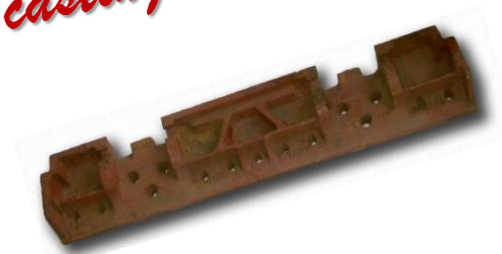
# Watertube Boilers – Construction and Field Services



- Repairs and maintenance
- Construction
- Metallurgical evaluation and analysis
- Boiler inspections
- Engineering services
- Commissioning and training services
- After sales service and spares



*OEM Spares & Meehanite castings!*



## Watertube Boilers – Typical Designs



### *Typical Bagasse-Fired Watertube Boiler*



- Mhlume Boiler No. 7
- 100 t/h steam
- 31 bar, 400 °C
- Fuel: bagasse/coal
- 400 t/h pre-boiler station

### *Typical Eckrohrkessel Cornertube Boiler*

- Caltex refinery
- 120 t/h steam
- 45 bar, 450 °C
- Fuel: HFO, Gas or vacuum residual

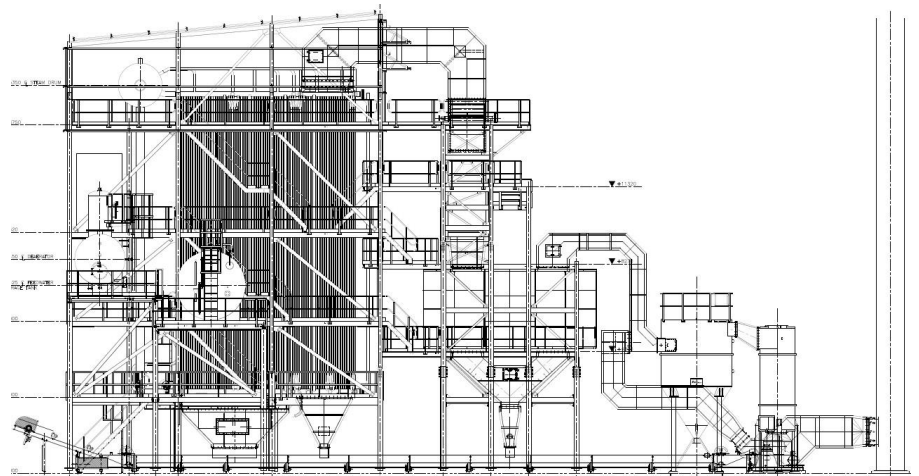


## Watertube Boilers – Typical Designs



### *MicroGen Boiler*

- Sumitomo Rubber Ladysmith  
Boiler no. 4
- 30 t/h steam
- 28 bar, sat
- Fuel: coal





# Under Construction at Glenmore, Indonesia 2 x 100 T Watertube Boilers



ACTOM

# Some Recent Watertube Boiler Installations in the Sugar Industry (300+ Total)



Project	Size T/h
Bombana, Indonesia	2 x 100
Kwilu Ngongo, DRC	80
Glenmore, Indonesia	2 x 100
Illovo Ubombo, Swaziland	104
Acucareira de Xinavane Sugar, Mozambique	180
TSB Komati, South Africa	150
Mhlume Sugar, Swaziland	125
TSB Malelane, South Africa	150
RSSC Simunye Sugar, Swaziland	125
Flacq United Estates Limited, Mauritius	100

## Boilers in the Sugar Industry

105 t/h bagasse-fired boiler under construction  
at Illovo Ubombo in Swaziland



# Watertube Boilers – Construction Operations



50 T/h bagasse/coal fired VU 70 boiler relocated to Illovo.

Eston sugar mill in South Africa.

# Watertube Boilers – Construction Operations

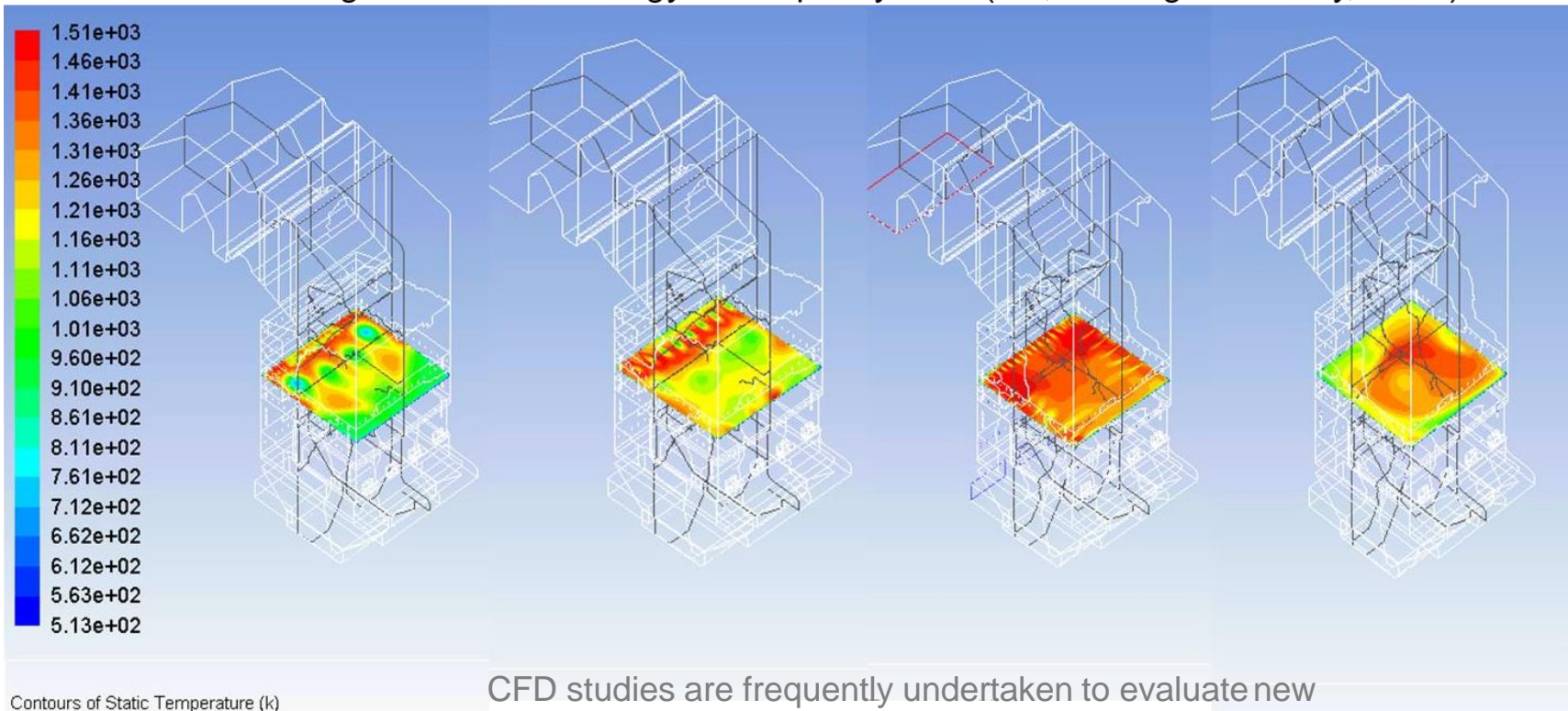


180 T/h bagasse/coal-fired boiler under construction in Mozambique



# Watertube Boilers – Design Aspects

“the integration of advanced secondary air supply systems in grate-firing boilers represents one of the real breakthroughs in this technology in the past years” (Yin, Aalborg University, 2012)



# Package Boilers

# Products and Services



- Package boilers
  - Thompson EUROPAC coal-fired
  - Thompson ENVIROPAC oil/gas-fired
  - Thompson REDIPAC oil/gas-fired
  - Thompson SIMPAC wood-fired
  - Thompson TORIPAC biomass-fired
- Waste-heat boilers
- Low voltage electrode boilers
- Micropac and Lamtec control systems
- Deaerators feedwater tanks
- Chaingrate stokers
- Gas cleaning solutions
- Steam outsourcing
- Engineering services
- Construction and field services





## Typical Large Boiler House



6 - Afripac 492K's



- Steam flow each 20 650 kg/h
- Steam pressure 1 830 kPa
- Efficiency on NCV 88%
- Fuel Pea Coal

# Typical Oil Fired Installation



3 - TM800 Multipacs  
(3 x 8 t/h)



## Construction and Field Services

---



- Construction
- Commissioning and training
- After sales service
- Spares
- Repairs
- Metallurgical evaluation
- Boiler inspections
- Engineering services



# Solutions Driven

## High efficiency coal-fired firetube boiler

**Efficiency solution**  
Micropac control system

Improved boiler eff.  
Less fuel  
Reduced human error  
Cost saving



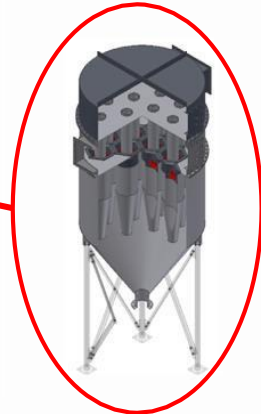
**Heat transfer solution**  
Spiral tubes

Improved boiler eff.  
Less fuel  
Smaller boiler  
Cost saving



**Gas cleaning solution**  
Bag filter

Lower grit emission  
Cleaner air



**Gas cleaning solution**  
High efficiency cyclones

Lower grit emission  
Cleaner air

- Outsourcing contracts
- Operating & maintenance contracts
- Existing boilerhouse management
- Steam utilization surveys & feasibility studies

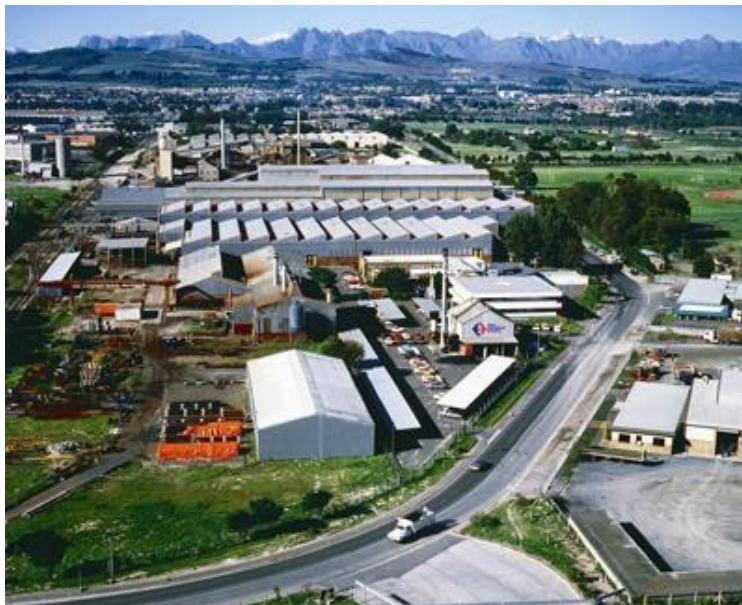


# Manufacturing

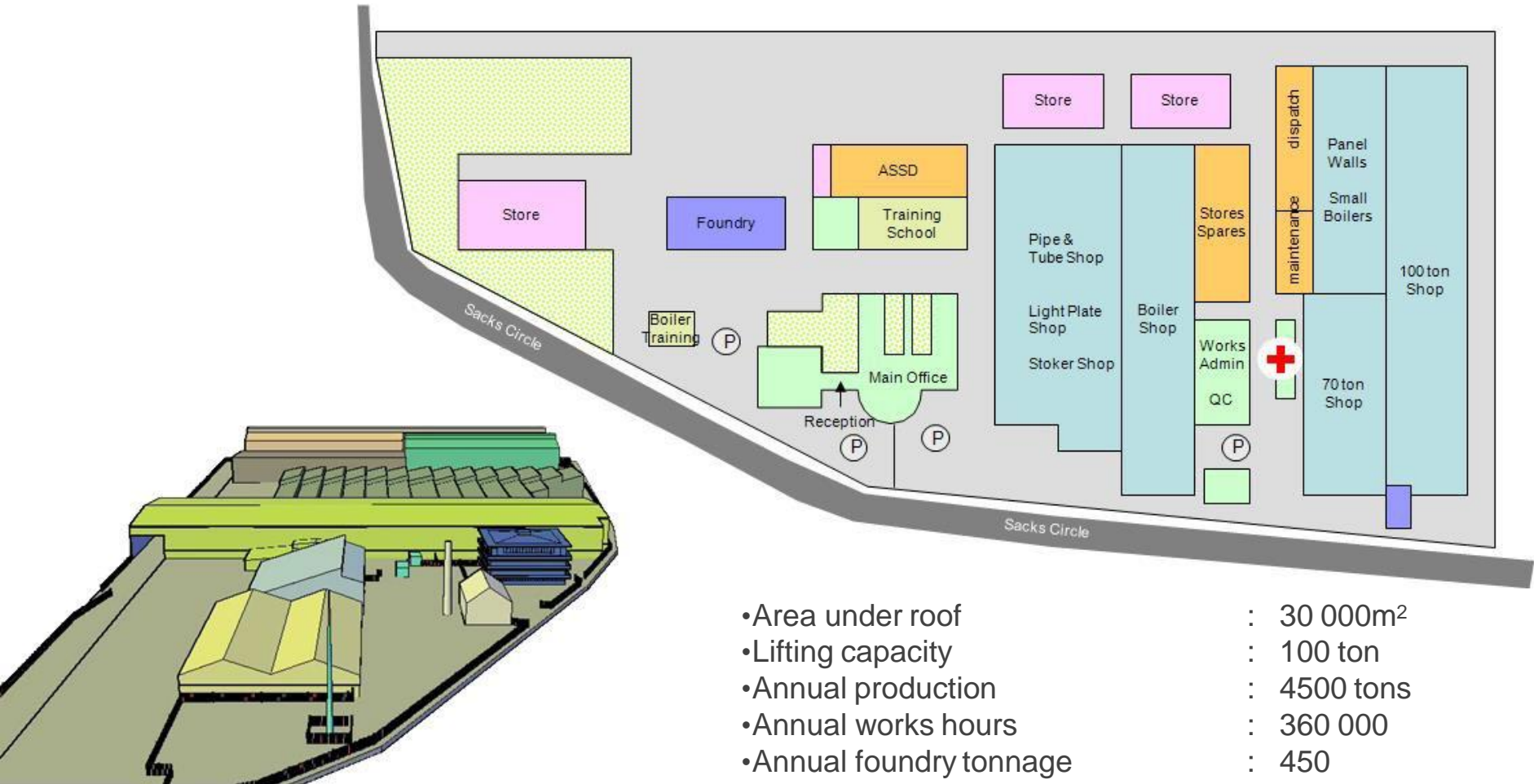
# Manufacturing



John Thompson works – since 1954



# Factory Layout



- Area under roof : 30 000m<sup>2</sup>
- Lifting capacity : 100 ton
- Annual production : 4500 tons
- Annual works hours : 360 000
- Annual foundry tonnage : 450



# Bellville Capabilities and Capacities

Cranes:

- *Lifting capacity up to 100 ton*

CNC plasma and oxy-acetylene profile cutting and flame bevelling:

- *Largest plate size 4 m x 14 m*

Guillotine:

- *Up to 3 m wide by 12 mm thick*

Plate rolling:

- *Up to 3,2 m wide and 70 mm cold*

Press brake:

- *Up to 400 ton, knife length 3 730 mm*

Hydraulic press:

- *Up to 500 ton*

Submerged arc welding machines:

- *Max. boom travel vertically 6 100 mm /*
- *Max boom travel horizontally 6100 mm*

Thermal stress relieving:

- *Size 21000 x 5 150 x 5 855 mm; Capacity 100 ton*

Radial and traveling bed drilling machines:

- *Max. distance outside column to spindle center 2 515 mm*
- *Max. height under spindle 2 200 mm*
- *Max. drill size 100mm, travel 11000 mm*

CNC pipe bending machine

- *Up to 115 mm diameter – cold bending*
- *Above 115mm – hot bending*

Automatic panel/membrane wall welding machines

Panel bending machine

Automatic economiser tube fin welding machines



# John Thompson Foundry



- All cast iron at the John Thompson foundry is produced under the Meehanite process
- It is South Africa's only foundry dedicated to boiler castings
- The Meehanite process covers the production of more than 40 grades of cast iron
- The Meehanite licence is restricted to 200 of the world's leading foundries
- The Meehanite process involves detailed specifications, records and controls at each step of production to ensure the consistent guaranteed high-grade quality of castings demanded by the international licensor.



- Ultrasonic testing (UT)
- Hardness testing (fixed & portable)
- Dye penetrant inspection (DPI)
- Magnetic particle inspection (MPI)
- X-Ray bay for the safe use of isotopes
- Metallurgical testing and investigations
- Ultrasonic thickness testing



The following welding processes are in use:

FBW

MMA

FCAW

OA

MCAW

SA

MAG & pulsed MAG

MIG & pulsed MIG

TIG & pulsed TIG

*Flash butt welding*

*Manual metal arc*

*Flux cored arc welding*

*Oxy-acetylene*

*Metal cored arc welding*

*Submerged arc welding*

*Metal active gas*

*Metal inert gas*

*Tungsten inert gas*





*Steam drum and  
economiser  
elements*

# Manufacturing Gallery



*Panel walls*



*Water-cooled hood*



*Pressure vessel*





*Spreader openings*

# Manufacturing Gallery



*Special fabrications*

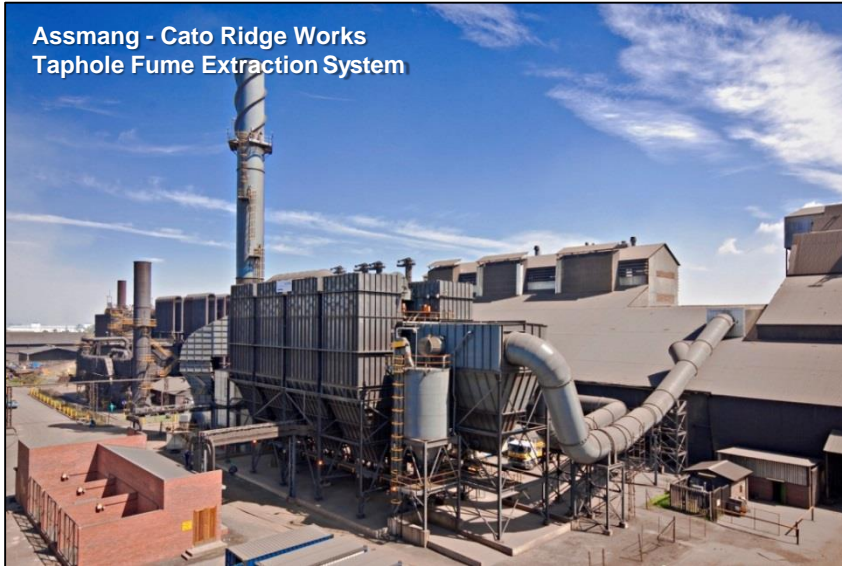




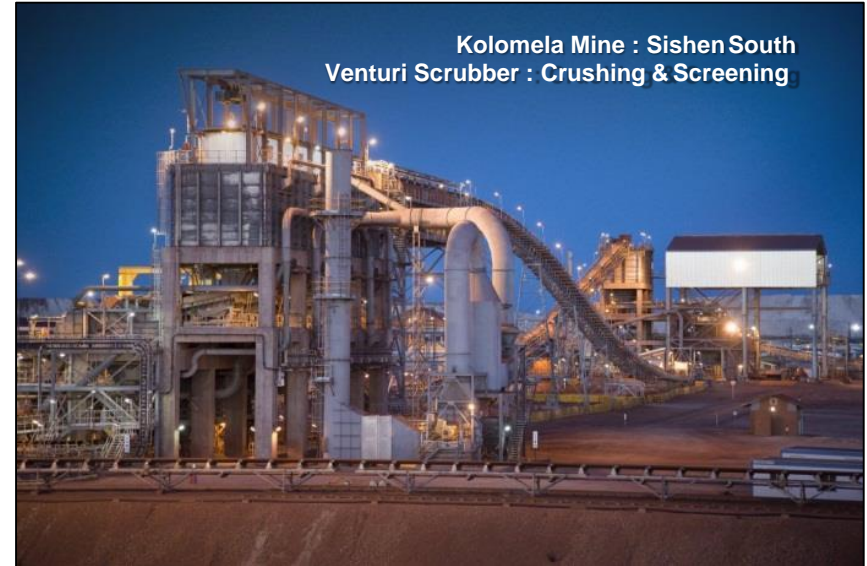
*Bowling-hoop  
furnaces*

# Air Pollution Control

## Core Business



Assmang - Cato Ridge Works  
Taphole Fume Extraction System



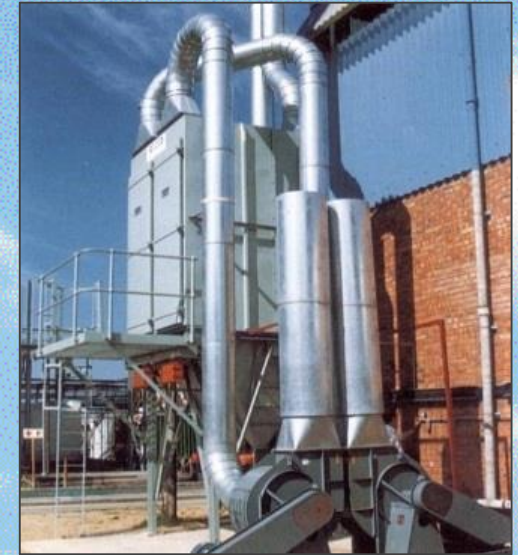
Kolomela Mine : Sishen South  
Venturi Scrubber : Crushing & Screening

Air Pollution Control's core business is the design, manufacture and installation of air pollution control equipment, dust control equipment, gas cleaning and product collection for industrial plants.

Over 45 years in Southern Africa

- Air pollution control • Gas cleaning • Dust control systems
  - Product recovery • Standard products
  - Turnkey systems • Powder processing
    - After-sales service and spares

**Air pollution control systems across the spectrum...  
from engineered systems to unit dust collectors.**



- **Reverse pulse bag filters**
  - tubular
  - envelope
- **Reverse air bag houses**
- **Wet scrubbers**
- **Cyclones**



- **Shaker type filters**
- **Silo vent filters**
- **Pressurisation units**
- **Dust suppression**
- **Powder processing equipment**

We offer one of the most comprehensive ranges of air filtration / dust collection products available for emissions control, gas cleaning and product recovery.



## Engineered Systems

Complete turnkey systems design and implementation capability including:

- Process analysis
- System design
- Equipment supply
- Installation
- Start-up
- Testing

Combined with years of application experience and global resources, products include:



## Pulse Jet Collectors (tubular)

The most widely used bag filter, providing high efficiency collection at a constant pressure drop.

# Product Range



## Reverse air baghouses

Used primarily in combustion related applications, these collectors are very effective for various applications involving extremely fine dust with low outlet emissions.



## Product collection

Where product is generated in “dust” form our older bag filters serve as an excellent product collector.



## Cyclones

High efficiency cyclones are the most cost-effective solution for separating dry particulate (5 microns or larger) from gas streams.



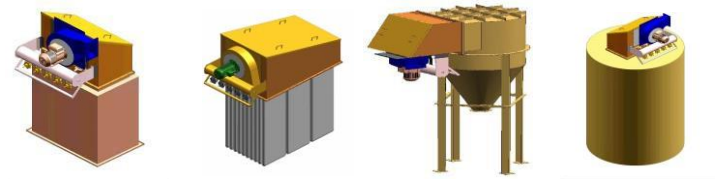
## Wet scrubbers

We offer several configurations and a full range of sizes to meet almost any requirement:

- High efficiency venturi scrubbers
- Dynamic scrubbers with integral fan
- Packed towers
- Multi-vane scrubbers
- Multi-venturi scrubbers



## Reverse pulse bag filters (envelope):



## Standard Products/ Dust Control Systems

John Thompson Air Pollution Control also offers standard products and dust control systems.

The company provides a complete service of design, manufacture and installation of dust control equipment for any type of dust in industrial, mining or commercial environments.



## FM Filcomatic (cased units)

Automatic reverse pulse fabric filter designed in modular format to give a compact filter for continuous operation with high dust loads and constant pressure drop.

The flat bags give maximum cloth area with minimum space and the modular construction allows accurate sizing of the filter to design air volume.

## FMI Filcomatic (insertable)

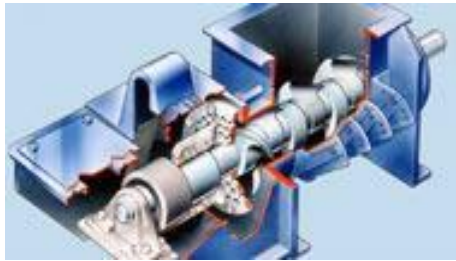
The insertable filter is manufactured in a range of sizes from 4 m<sup>2</sup> to 60 m<sup>2</sup> of cloth area, with or without integral fan.

The units are designed to be incorporated into other equipment such as pneumatic conveying



systems, silos, conveyor belt transfer points, mills and in fact any application where the collected dust can or needs to be returned to the process.

# Product Range



## Powder processing equipment:

- **Alpine** Pin mills, fine impact mills, classifiers, air jet sieves, wide chamber mills, compactors, pelletising systems, briquetting plants
- **Schugi** High speed agglomeration, mixers
- **Rietz** Rubber choppers, disintegrators

## Our services include:

- Complete system evaluations
- Mechanical equipment review and evaluation
- Conversion and upgrading of equipment
- Equipment refurbishing and rebuilding
- Technical training
- Maintenance training
- Service contracts
- Spare parts

## Industries in Which We Operate



- Power generation
- Petrochemical
- Iron & steel
- Dryers
- Coal
- Sugar
- Ferro alloys
- Iron ore
- Mineral sands
- Cement
- Diamonds
- Tyres / rubber
- Foundry
- Gold mining
- Refractory industry
- Industrial boilers



## Clients

Since establishing our operation in South Africa, we have had orders from major clients, such as:

- AECI
- African Products
- AfriSam
- Alstom Power
- Anglo American
- Anglo Platinum
- ArcelorMittal
- ASA Metals
- Assmang
- Babcock
- BHP Billiton
- Cato Ridge Alloys
- DRA
- Columbus Stainless Steel
- Drytech
- E & PC
- ELB Engineering
- Eskom
- Exxaro
- Ferrometals
- Fluor-Daniel
- Foskor
- Glencore Xstrata
- Hatch
- Heckett
- Hercul
- Ferrochrome
- Hillside Aluminium
- Hulamin
- Impala Platinum
- Kumba Resources
- K'Enyuka
- Lafarge
- Loesche
- Metso
- Moma Mineral Sands
- Mozal
- Murray & Roberts
- Dundee Precious Metals
- Namzinc
- Outotec
- PPC
- **Richards Bay Minerals**
- Rio Tinto
- Senet
- Sishen Iron Ore
- Samancor
- Sasol
- Scaw Metals
- Tati Nickel
- Tenova Takraf
- Tronox
- Zinchem

# John Thompson Website – [www.johnthompson.co.za](http://www.johnthompson.co.za)



The image shows two overlapping screenshots of the John Thompson website. The top screenshot is the homepage, featuring a blue header with the ACTOM logo and navigation links for Home, Products and Services, Company, Media, and Contact. The main content area has a large blue banner with the text: "FROM PIONEERS IN BOILER TECHNOLOGY... TO GLOBAL LEADERS IN ENERGY AND ENVIRONMENTAL SOLUTIONS". The bottom screenshot shows a media page with two articles. The first article is titled "Significant changes to boiler design code" and discusses the incorporation of section 44 of the Occupational Health and Safety Act (Act No. 85 of 1993). The second article is titled "John Thompson awarded CE quality marking" and mentions a contract for a 12 t/h 14 bar(g) steam generator. Both articles include a "Read More" link. A search bar and a "Recent media" section are also visible on the right side of the media page.

[www.johnthompson.co.za](http://www.johnthompson.co.za)



