

DEPARTMENT OF TRANSPORT

NO. 928

30 September 2021

**THE SOUTH AFRICAN NATIONAL ROADS
AGENCY SOC LIMITED**

Registration No: 1998/009584/30

DECLARATION AMENDMENT OF NATIONAL ROAD R579 SECTION 2

AMENDMENT OF DECLARATION No. 538 OF 2014.

By virtue of section 40(1)(b) of the South African National Roads Agency Limited and the National Roads Act 1998 (Act No. 7 of 1998), I hereby amend Declaration No. 538 of 2014 by substituting paragraph O(II) and O(III) of the Schedule, being the descriptive declaration of the route from Morwaneng up to Maleetse, with the accompanying sheets 1 to 7 of Plan No. P1092/18.

(National Road R579 Section 2: Morwaneng – Maleetse)**MINISTER OF TRANSPORT**

DEPARTEMENT VAN VERVOER

NO. 928

30 September 2021

**DIE SUID-AFRIKAANSE NASIONALE
PADAGENTSKAP MSB BEPERK**

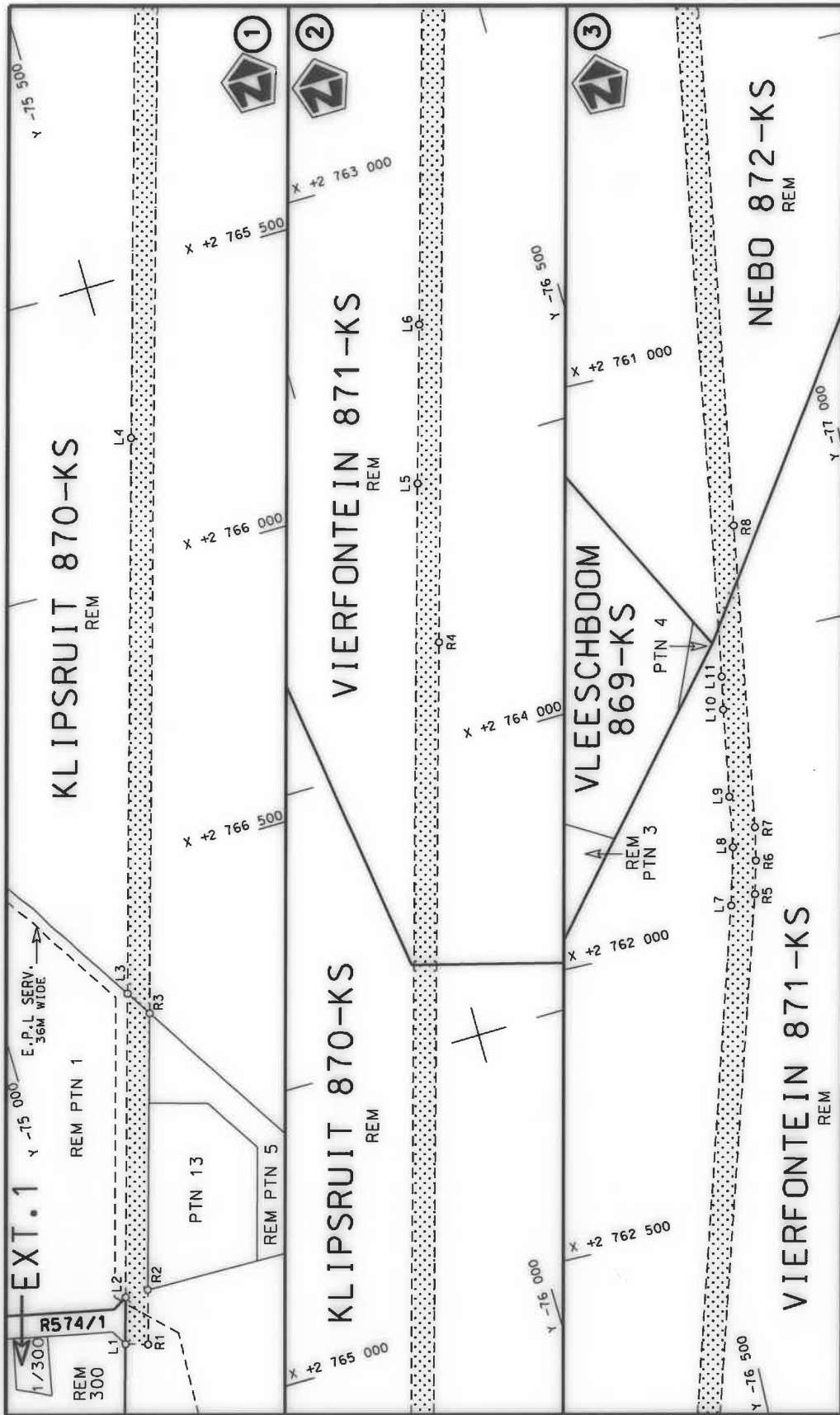
Registrasie No: 1998/009584/30

VERKLARING WYSIGING VAN NASIONALE PAD R579 SEKSIE 2

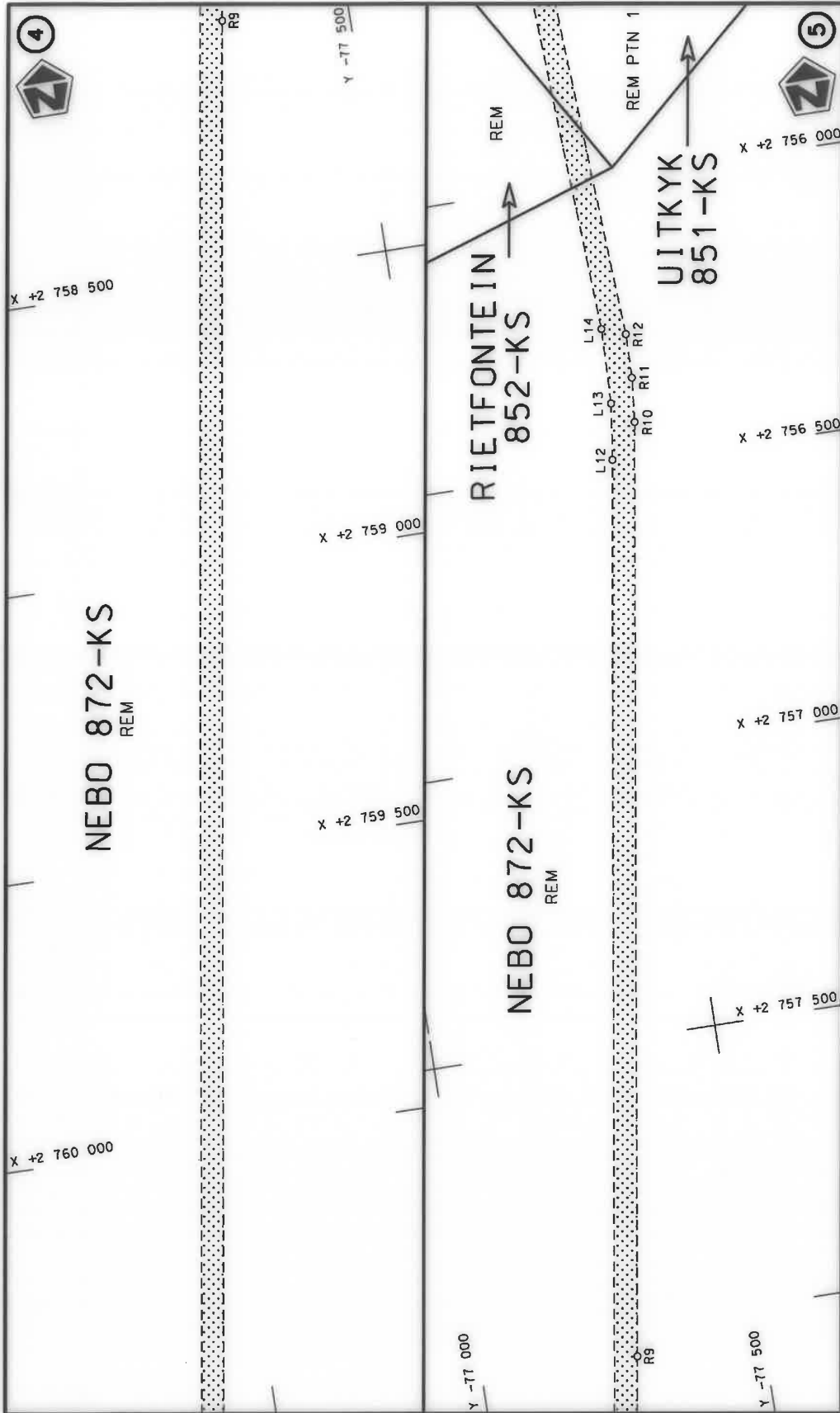
WYSIGING VAN VERKLARING No. 538 VAN 2014.

Kragtens Artikel 40(1)(b) van die Wet op die Suid-Afrikaanse Nasionale Padagentskap Beperk en op Nasionale Paaie Wet 1998 (Wet No. 7 van 1998), wysig ek hiermee Verklaring No. 538 van 2014 deur paragraaf O(II) en O(III) van die Skedule te vervang, synde die gedeelte van die beskrywende verklaring van die pad vanaf Morwaneng tot by Maleetse, met bygaande velle 1 tot 7 van Plan No. P1092/18.

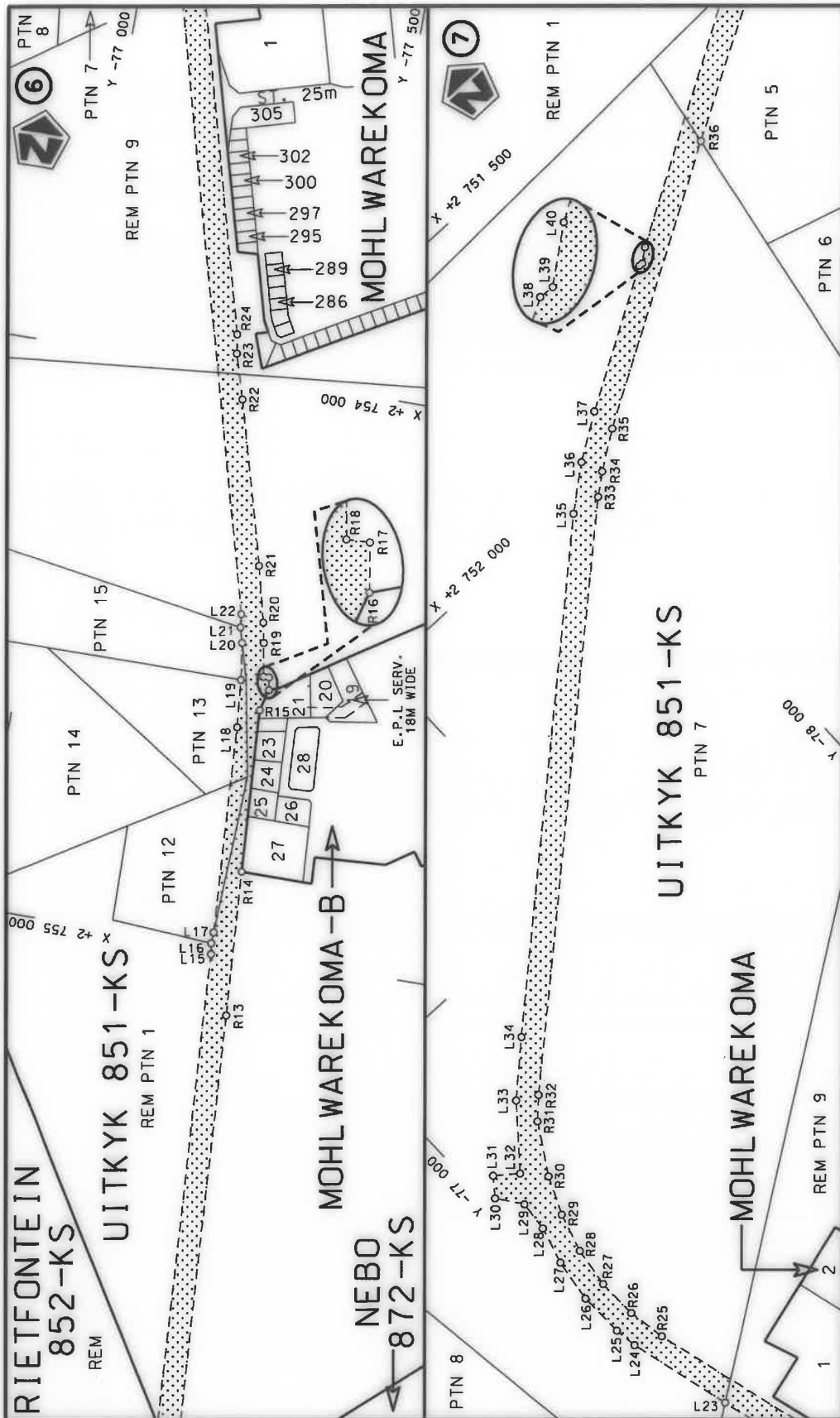
(Nasionale Pad R579 Seksie 2: Morwaneng – Maleetse)
MINISTER VAN VERVOER



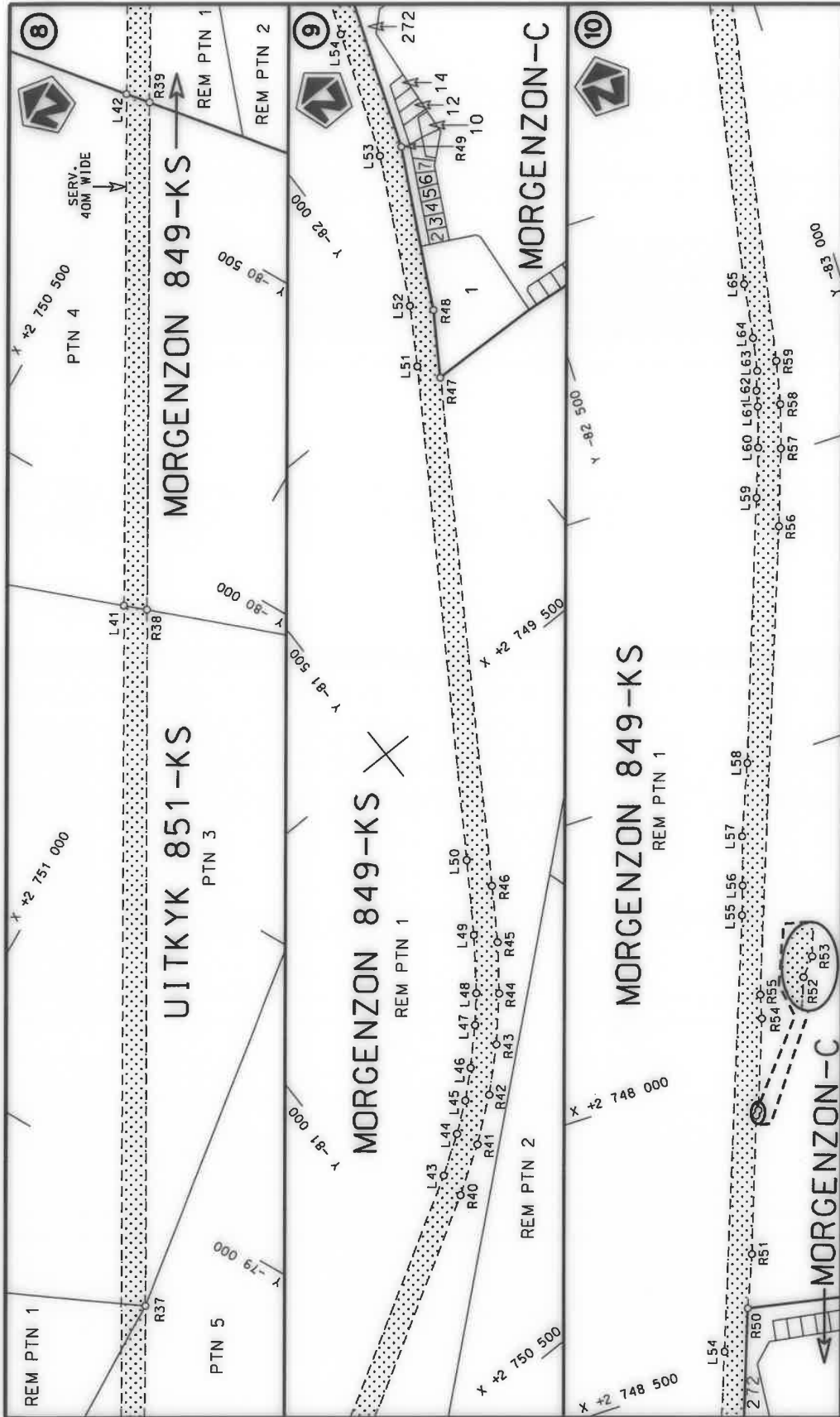
<p>Die Suid Afrikaanse Nasionale Padagentskap MSB Bpk The South African National Roads Agency SOC Ltd</p>	<p>Die figuur getoon The figure shown</p> 	<p>steldie podreserwe voor van 'n gedeelte represents the road reserve of a portion van Nasionale Roete R579 Seksie of National Route Section</p>	<p>Vel Sheet 1 of 7 Plan P1092/18</p>
---	---	---	---



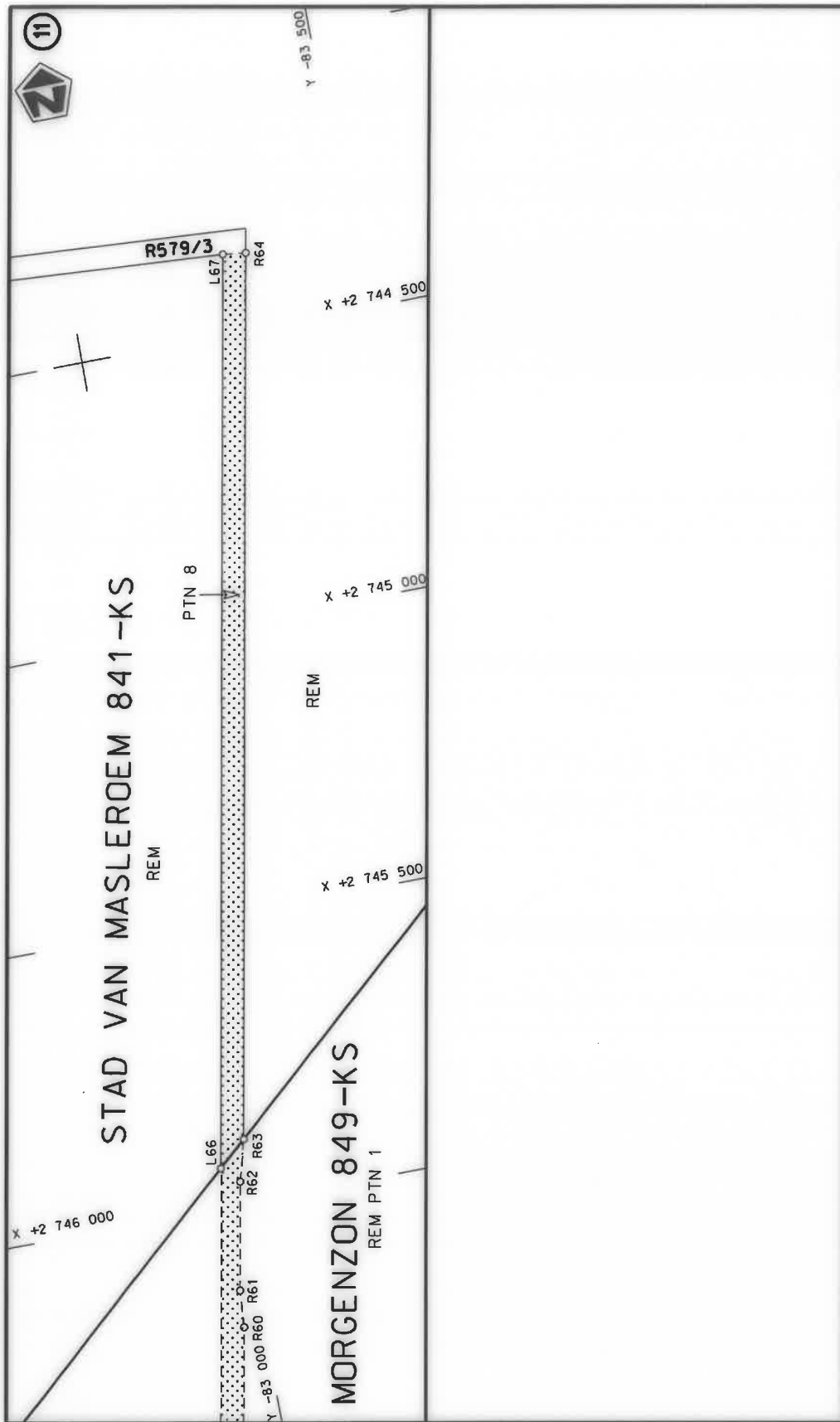
<p>Die Suid Afrikaanse Nasionale Padagentskap MSB Bpk The South African National Roads Agency SOC Ltd</p>	<p>Die figuur getoon The figure shown</p>	<p>stel die padreserwe voor van 'n gedeelte represents the road reserve of a portion van Nasionale Roete R579 Seksie of National Route Section</p>	<p>Vel Sheet 2 of 7 Plan P1092/18</p>
---	---	--	---




<p>Die Suid Afrikaanse Nasionale Padagentskap MSB Bpk The South African National Roads Agency SOC Ltd</p>	<p>Die figuur getoon The figure shown</p>	<p>stel die padreserwe voor van 'n gedeelte represents the road reserve of a portion van Nasionale Roete R579 Sektie of National Route Section</p>	<p>Vel Sheet 3 of 7</p>
<p>Plan P1092/18</p>		<p>2</p>	



<p>Die Suid Afrikaanse Nasionale Padagentskap MSB Bpk The South African National Roads Agency SOC Ltd</p>	<p>Die figuur getoon The figure shown</p> 	<p>steldie podreserwe voor van 'n gedeelte represents the road reserve of a portion van Nasionale Roete R579 Sektie of National Route Section</p>	<p>Vel Sheet 4 of 7 Plan P1092/18</p>
---	---	---	---



<p>Die Suid-Afrikaanse Nasionale Padogentskap MSB Bpk The South African National Roads Agency SOC Ltd</p>	<p>Die figuur getoon The figure shown</p> 	<p>stel die padreserwe voor van 'n gedeelte represents the road reserve of a portion van Nasionale Roete R579 of National Route</p> <p>Seksie Section</p> <p>2</p>	<p>Vel Sheet</p> <p>5 of 7</p> <p>Plan P1092/18</p>
---	---	--	---

PADRESERWE KOÖRDINATE / ROAD RESERVE CO-ORDINATES					
LINKERKANT/LEFT HAND SIDE			REGTERKANT/RIGHT HAND SIDE		
	Y	X	WG 29°	Y	X
L1	-75 050.86	2 767 304.91		R1	-75 089.22 2 767 316.25
L2	-75 074.20	2 767 225.98		R2	-75 115.06 2 767 224.07
L3	-75 225.81	2 766 712.72		R3	-75 253.63 2 766 756.83
L4	-75 502.00	2 765 774.82		R4	-76 123.31 2 763 815.87
L5	-76 163.89	2 763 536.96		R5	-76 676.81 2 761 943.35
L6	-76 243.66	2 763 269.41		R6	-76 691.30 2 761 886.15
L7	-76 631.98	2 761 953.91		R7	-76 702.47 2 761 828.21
L8	-76 657.25	2 761 854.27		R8	-76 782.05 2 761 302.24
L9	-76 670.59	2 761 766.11		R9	-77 277.04 2 758 055.28
L10	-76 693.57	2 761 614.21		R10	-77 523.11 2 756 429.63
L11	-76 703.71	2 761 556.98		R11	-77 529.87 2 756 351.91
L12	-77 474.47	2 756 489.42		R12	-77 530.93 2 756 274.72
L13	-77 487.00	2 756 391.10		R13	-77 460.46 2 755 111.96
L14	-77 490.12	2 756 259.16		R14	-77 443.89 2 754 859.79
L15	-77 415.88	2 755 011.41		R15	-77 427.04 2 754 575.17
L16	-77 412.74	2 754 992.30		R16	-77 437.21 2 754 537.55
L17	-77 413.59	2 754 972.96		R17	-77 433.51 2 754 515.71
L18	-77 392.04	2 754 610.82		R18	-77 423.15 2 754 516.12
L19	-77 384.53	2 754 528.70		R19	-77 413.43 2 754 457.13
L20	-77 375.27	2 754 464.28		R20	-77 406.38 2 754 422.08
L21	-77 367.58	2 754 438.03		R21	-77 381.73 2 754 325.39
L22	-77 365.15	2 754 415.07		R22	-77 301.72 2 754 043.59
L23	-77 070.19	2 753 354.35		R23	-77 278.00 2 753 966.10
L24	-77 021.11	2 753 170.09		R24	-77 272.73 2 753 932.83
L25	-77 015.52	2 753 130.08		R25	-77 066.83 2 753 191.27
L26	-77 013.06	2 753 051.28		R26	-77 054.99 2 753 124.58
L27	-77 023.31	2 752 974.94		R27	-77 053.01 2 753 053.38
L28	-77 041.87	2 752 909.99		R28	-77 062.55 2 752 982.80
L29	-77 047.25	2 752 857.34		R29	-77 082.12 2 752 914.42
L30	-77 016.74	2 752 814.92		R30	-77 110.73 2 752 849.34
L31	-77 040.98	2 752 783.43		R31	-77 162.27 2 752 765.49
L32	-77 078.18	2 752 812.34		R32	-77 195.06 2 752 732.60
L33	-77 159.60	2 752 713.18		R33	-77 979.96 2 752 029.66
L34	-77 241.89	2 752 637.49		R34	-78 015.28 2 752 001.92
L35	-77 928.38	2 752 022.70		R35	-78 079.16 2 751 958.62
L36	-77 999.83	2 751 965.51		R36	-78 533.24 2 751 693.85
L37	-78 076.42	2 751 915.03		R37	-78 829.69 2 751 523.63
L38	-78 306.51	2 751 780.79		R38	-79 884.03 2 750 906.33
L39	-78 313.31	2 751 781.14		R39	-80 651.48 2 750 458.59
L40	-78 336.06	2 751 763.55		R40	-81 118.77 2 750 186.30
L41	-79 870.11	2 750 868.15		R41	-81 197.19 2 750 135.35
L42	-80 643.98	2 750 416.65		R42	-81 267.60 2 750 080.13
L43	-81 117.20	2 750 140.98		R43	-81 332.90 2 750 018.94
L44	-81 181.09	2 750 098.62		R44	-81 392.58 2 749 952.27
L45	-81 229.00	2 750 062.19		R45	-81 446.43 2 749 880.25
L46	-81 272.24	2 750 022.83		R46	-81 500.57 2 749 796.95
L47	-81 324.80	2 749 969.15		R47	-81 986.36 2 749 045.02
L48	-81 361.63	2 749 926.93		R48	-82 051.15 2 748 944.97
L49	-81 422.19	2 749 844.54		R49	-82 185.17 2 748 686.41
L50	-81 494.46	2 749 733.90		R50	-82 287.79 2 748 405.72
L51	-81 967.30	2 749 003.86		R51	-82 323.81 2 748 316.32

Vel
Sheet

6

Van
of

7

P1092/18

PADRESERWE KOÖRDINATE / ROAD RESERVE CO-ORDINATES					
LINKERKANT/LEFT HAND SIDE			REGTERKANT/RIGHT HAND SIDE		
	Y	X	WG 29°	Y	X
L52	-82 023.32	2 748 912.56		R52	-82 406.30 2 748 086.89
L53	-82 145.99	2 748 674.13		R53	-82 412.66 2 748 079.44
L54	-82 224.55	2 748 464.27		R54	-82 468.00 2 747 928.26
L55	-82 489.97	2 747 744.91		R55	-82 478.25 2 747 887.65
L56	-82 507.07	2 747 695.56		R56	-82 761.70 2 747 116.24
L57	-82 532.62	2 747 613.29		R57	-82 806.91 2 746 987.39
L58	-82 581.14	2 747 493.75		R58	-82 829.62 2 746 913.34
L59	-82 739.37	2 747 056.62		R59	-82 846.06 2 746 838.97
L60	-82 769.26	2 746 973.88		R60	-82 965.46 2 746 213.13
L61	-82 790.64	2 746 905.05		R61	-82 970.53 2 746 148.61
L62	-82 796.98	2 746 877.77		R62	-83 006.46 2 745 961.12
L63	-82 808.80	2 746 845.29		R63	-83 027.18 2 745 889.70
L64	-82 819.30	2 746 788.04		R64	-83 318.93 2 744 363.87
L65	-82 833.18	2 746 693.35			
L66	-82 978.36	2 745 931.99			
L67	-83 278.73	2 744 361.08			

Vel Sheet	7	Van of	7	P1092/18
--------------	---	-----------	---	----------