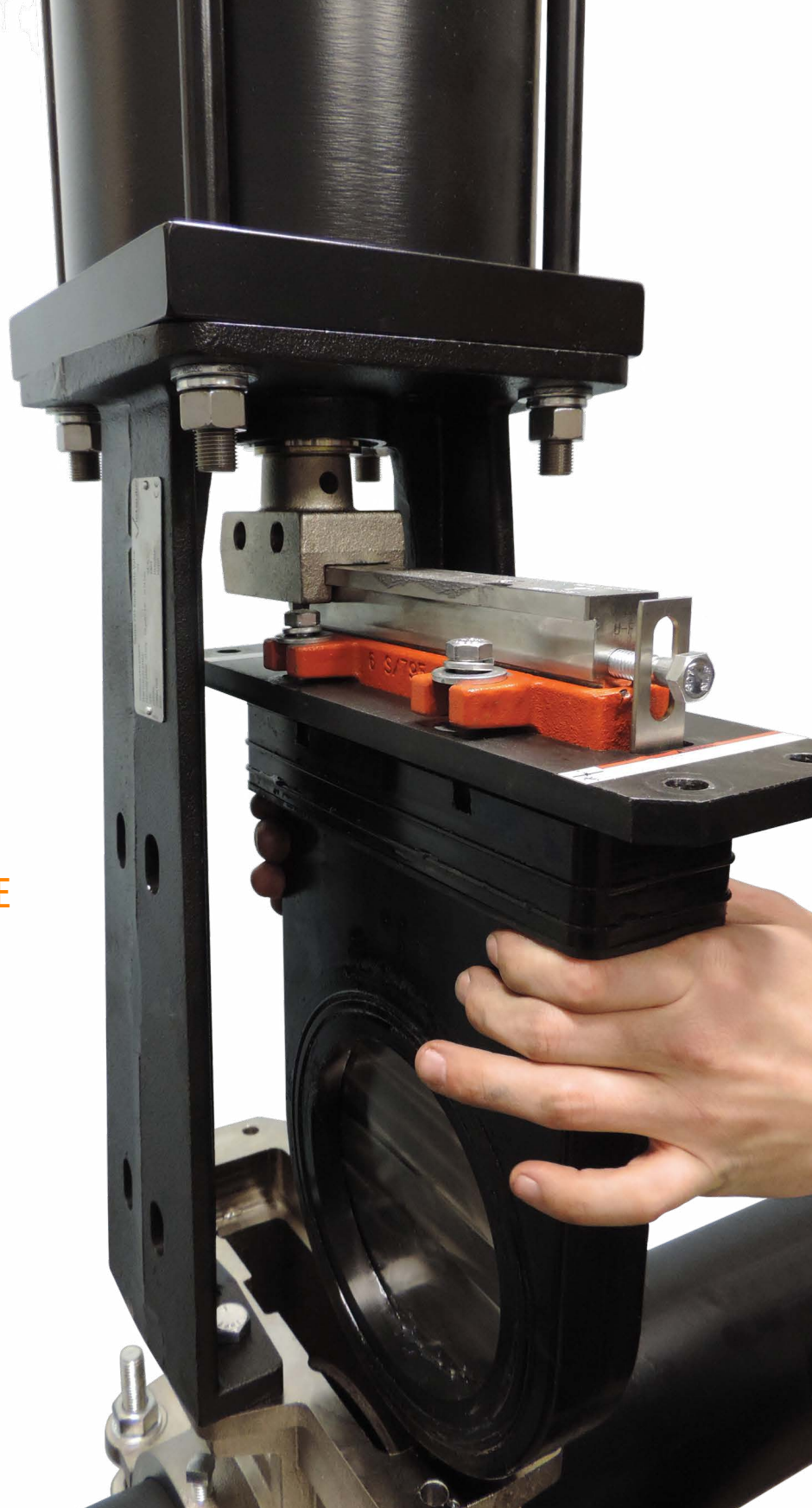


VICTAULIC KNIFE GATE VALVE

THE INDUSTRY'S FIRST IN-LINE
MAINTENANCE KNIFE GATE VALVE



THE WORLD LEADER IN PIPE JOINING SOLUTIONS

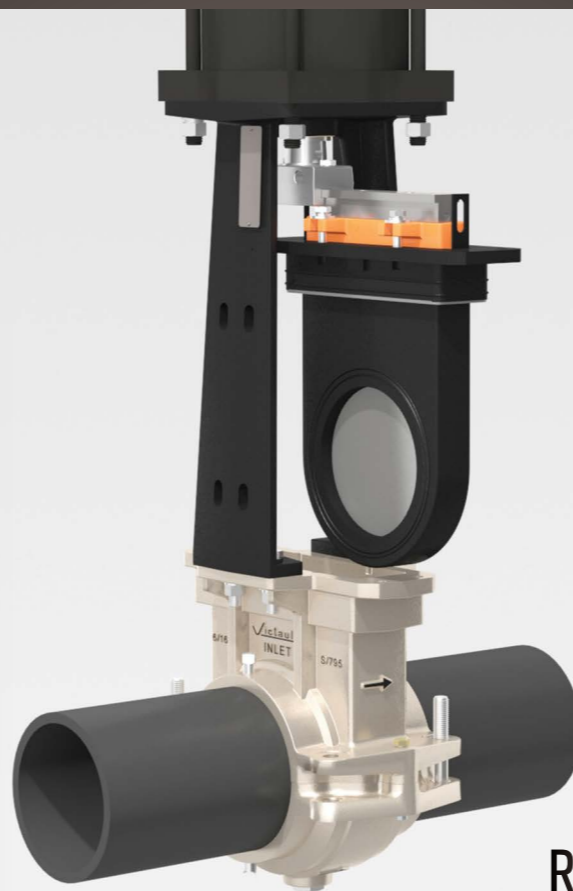


MAKE NO BONES ABOUT IT. **THIS CHANGES THE GAME.**

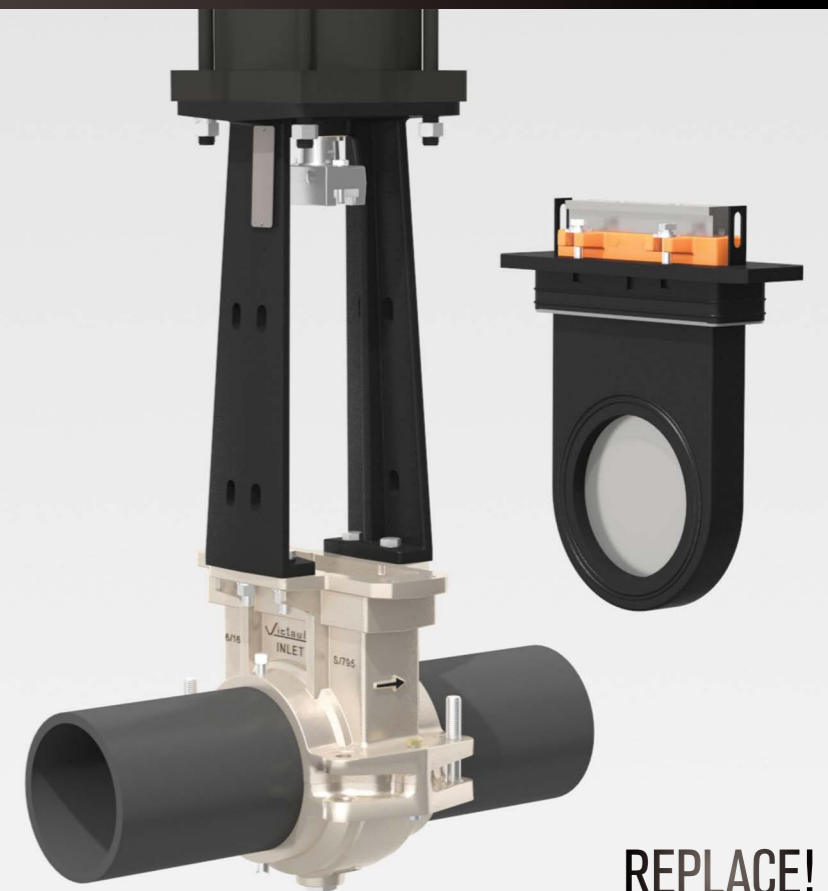
Save 60% in maintenance costs and 95% in downtime



ACTUATE!



REMOVE!



REPLACE!

No need to remove the valve from the pipeline, all the wear parts are contained in a single cartridge kit and can be replaced in-line in just minutes.

BONEYARD-FREE KGV

Dragging your old knife gate valves to the boneyard for repair is now a thing of the past.

Victaulic has developed the first knife gate valve that can be maintained in-line without having to disconnect it from the piping system.

BENEFITS



SAFETY:

Reduced rigging during maintenance protects your crew from hazards. No more chains, pulleys or ropes during maintenance for this valve. All you need are simple hand tools to get the job done.



PRODUCTIVITY:

This valve can be maintained up to 95% faster when compared to competitor gate valves. Save hours of labor by not having to secure and tear out the entire valve from the pipeline. The Victaulic knife gate valve maintenance cycle can be accomplished in just mere minutes.



INVENTORY:

This valve won't burden your boneyard because it never needs to be removed from the pipeline. The only wear parts on this valve are enclosed in a single cartridge kit and after scheduled maintenance shutdowns, all you're sending away is the old kit. That's a fraction of the shelf space and dead weight when compared to the whole valve you're used to dragging around.



CAPITAL:

No need to send your capital straight to the boneyard. The Victaulic knife gate valve isn't dead yet and will live on maintenance cycle after cycle. When you buy a Victaulic knife gate valve, you only have to buy it once. It's only the seat cartridge kit you have to replace during shutdown, not the whole valve. That idea alone saves you at least 60% in annual maintenance costs.

“AFTER WE INSTALLED IT, IT HAS RUN LIKE A DREAM. WE HAVE BEEN SO IMPRESSED WITH THIS VALVE – WE ARE LOOKING AT PURCHASING ADDITIONAL VALVES.”

Amy French,
Senior Maintenance Planner at Golden Sunlight Mining in Montana



BY THE NUMBERS

Annual Maintenance
Time And Cost Savings



Number of hours it takes to remove and replace a worn valve (flanged) versus a Victaulic seat cartridge.

Number of people needed to disconnect, rig, remove, replace, and reconnect (electrical).

Time x Manpower to completely remove and replace a worn out valve.

Material + Labor Cost for maintenance shop to rebuild valve (flanged) versus the cost of a replacement Victaulic seat cartridge

Number of hours it takes to remove and replace a worn valve (flanged) versus a Victaulic seat cartridge.

	Replacing Flanged Valves	Maintaining Victaulic Knife Gate Valves
Downtime	4	0.2
Manpower	4.2	2
TOTAL LABOR HOURS	16.8	0.4
Hourly Rate	\$80	\$80
REMOVE AND REPLACE LABOR	\$1,344	\$32
Shop Rebuild Material and Labor	\$2,500	\$1500
MAINTENANCE COST PER VALVE	\$3,844	\$1,532
Valves per Year	80	80
TOTAL MAINTENANCE COST PER YEAR	\$307,520	\$122,560

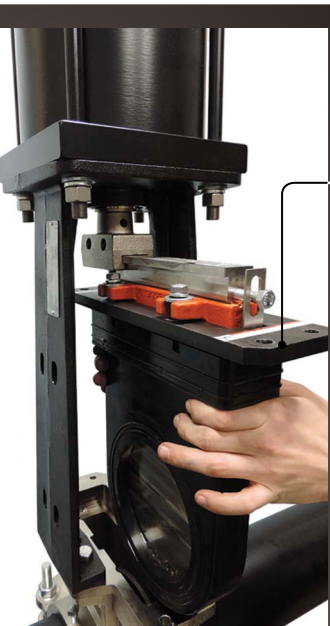
60% SAVINGS

Downtime	4	0.2
Valves per Year	80	80
TOTAL DOWNTIME HOURS	320	16
Cost per Downtime Hour	\$135,000	\$135,000
TOTAL DOWNTIME COST PER YEAR	\$43,200,000	\$2,160,000

95% SAVINGS

Example savings for a facility operating 80 valves.

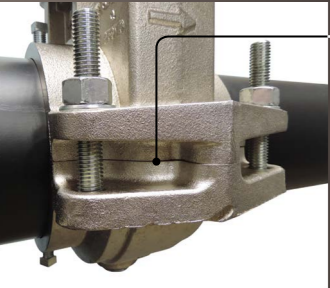
INNOVATION AT A GLANCE



One-piece Replacement Cartridge

Eliminates the need for a second “maintenance” valve, significant reduction of inventory costs

Eliminates need to rebuild worn out valves – reduce maintenance risk



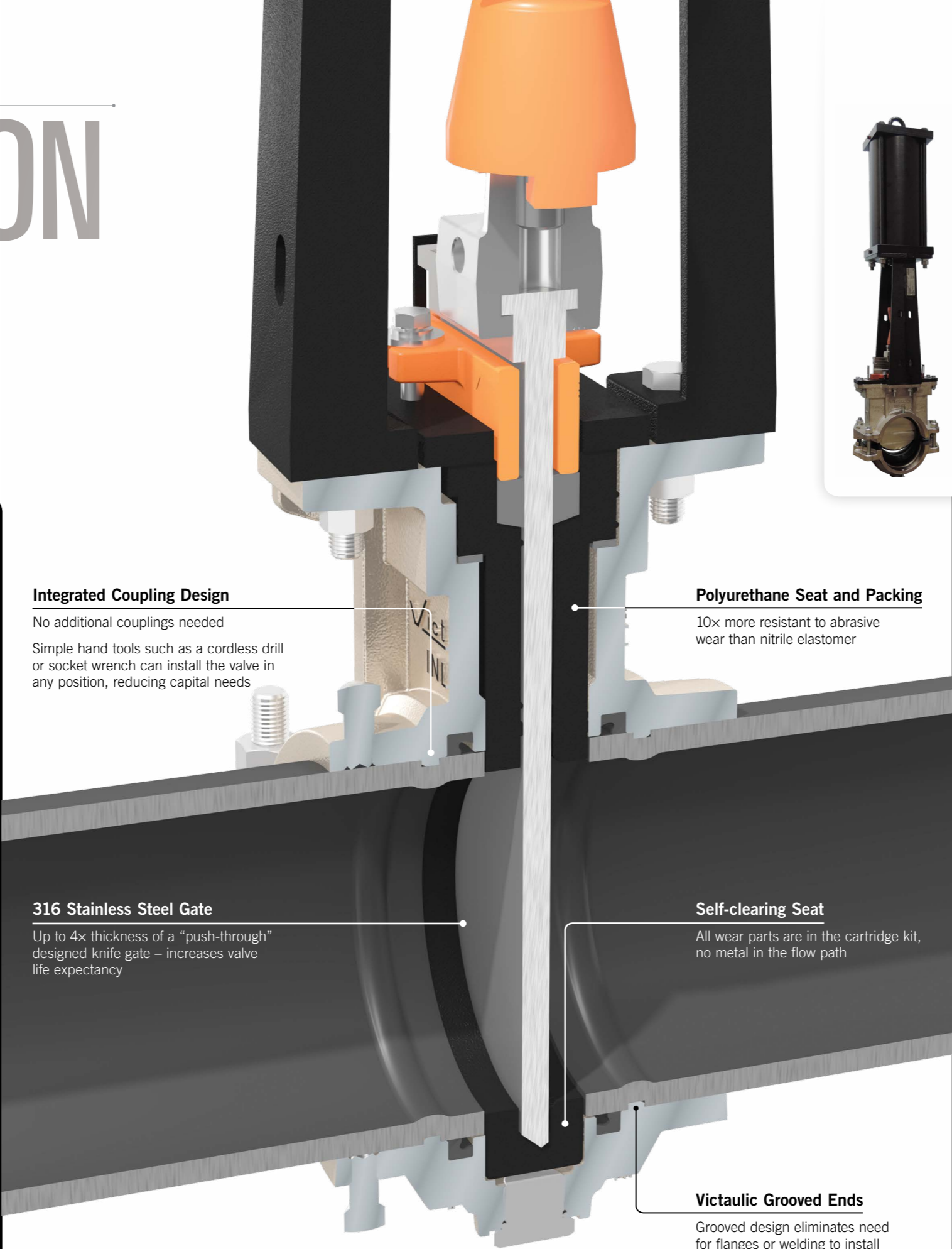
Bolt Pad to Bolt Pad Assembly

Valve is Installation-Ready™ with no loose parts



360° Positioning Bolts

Provide full 360° rotation for positioning, not limited to flange bolt hole position



Integrated Coupling Design

No additional couplings needed

Simple hand tools such as a cordless drill or socket wrench can install the valve in any position, reducing capital needs

316 Stainless Steel Gate

Up to 4x thickness of a “push-through” designed knife gate – increases valve life expectancy

Polyurethane Seat and Packing

10x more resistant to abrasive wear than nitrile elastomer

Self-clearing Seat

All wear parts are in the cartridge kit, no metal in the flow path

Victaulic Grooved Ends

Grooved design eliminates need for flanges or welding to install



Pneumatic

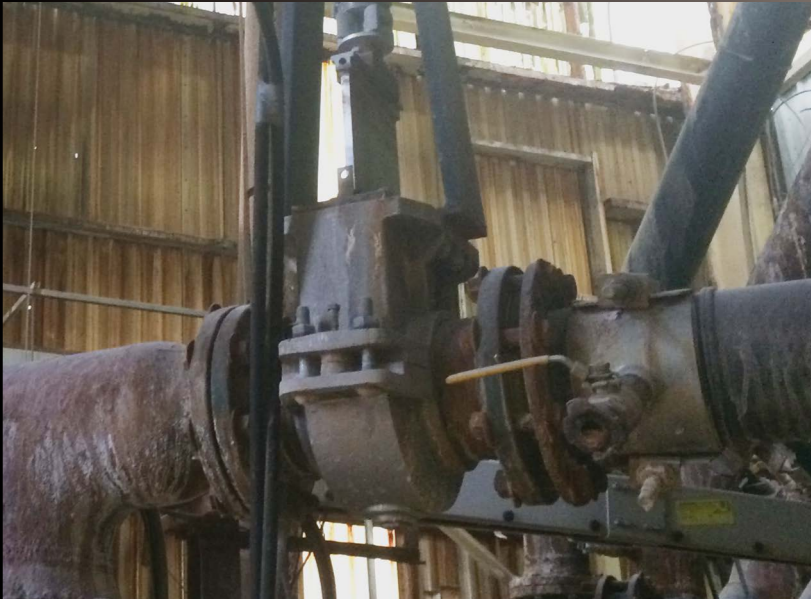
- 3–12" | 80–300mm
- 150 psi | 1035 kPa | 10 bar

Hydraulic

- 3–12" | 80–300mm
- 150 psi | 1035 kPa | 10 bar

Manual

- 3–8" | 80–200mm
Manual Hand Wheel
- 10–12" | 250–300mm
Bevel Gear
- 150 psi | 1035 kPa | 10 bar



VICTAULIC® WORLDWIDE

North and South America

UNITED STATES AND WORLD HEADQUARTERS

4901 Kesslersville Road
Easton, PA 18040 USA
1 800 PICK VIC
1 800 742 5842
(within North America)
1 610 559 3300

pickvic@victaulic.com

CANADA

123 Newkirk Road
Richmond Hill
Ontario L4C 3G5 Canada
1 905 884 7444

viccanada@victaulic.com

MEXICO

Calle Circuito del Marques
No 8 al 11
Parque Industrial El Marques
Municipio El Marques
Queretaro, Mexico
CP 76246

52 442 253 0066

vical@victaulic.com

BRAZIL

Av. Marquês de São Vicente
446 Cj 1303
Várzea da Barra Funda –
São Paulo-SP
CEP 01139-000 – Brazil

55 11 3548 4280

vicbr@victaulic.com

Europe, Middle East, Africa and India

BELGIUM AND GERMANY

Prijkelstraat 36
9810 Nazareth, Belgium
32 9 381 15 00
49 6151 9573 0
(within Germany)

viceuro@victaulic.com

UNITED KINGDOM

Units B1 & B2, SG1 Industrial Park
Cockerell Close, Gunnels Wood Road
Stevenage, Hertfordshire, UK
SG 1 2NB

44 1438 310 690

viceuro@victaulic.com

UNITED ARAB EMIRATES

P.O. Box 17683, Unit XB 8
Jebel Ali Free Zone
Dubai, United Arab Emirates
971 4 883 88 70

viceuro@victaulic.com

INDIA

India Land Global Industrial Park
Plot 4, Hinjewadi, Phase-1, Mulshi
Pune 411057, India
91 20 67 919 300

viceuro@victaulic.com

Asia Pacific

CHINA

Unit 808, Building B
Hongwell International Plaza
No.1602 West Zhongshan Road
Shanghai, China 200235

86 21 6021 9400

vicap@victaulic.com

KOREA

4F, Seoil Building, 1430-5,
Seocho-Dong, Seocho-Gu
Seoul, Korea 137-070

82 2 521 7235

vicap@victaulic.com

TAIWAN

No. 55, NanGong Rd, LuZhu Dist.
TaoYuan City 338, Taiwan (R.O.C.)

886 3222 3220

vicap@victaulic.com

AUSTRALIA AND NEW ZEALAND

7 Chambers Road
Unit 1
Altona North, Victoria
Australia 3025

1 300 PIC VIC
1 300 742 842
(within Australia)

0 508 PICK VIC
0 508 7425 842
(within New Zealand)

61 3 9392 4000

vicaust@victaulic.com

For additional locations, information and
support, visit victaulic.com/contactus



victaulicknifegate.com



PB-795 9173 REV C 06/2016

Victaulic and all other Victaulic marks are the trademarks or registered trademarks of Victaulic Company, and/or its affiliated entities, in the U.S. and/or other countries. All other trademarks listed herein are the property of their respective holders, in the U.S. and/or other countries. The terms "Patented" or "Patent Pending" refer to design or utility patents or patent applications for articles and/or methods of use in the United States and/or other countries.

© 2016 VICTAULIC COMPANY. ALL RIGHTS RESERVED.

